



building the leaders of tomorrow

The FarmHouse Foundation | *2011-12 Annual Report*



## Table of Contents



Chairman Message	3
Executive Director Message	4
Trustees & Staff	5
About the Foundation	6
Programs	8
Honor Roll of Donors	11
Honor Roll by Chapter	15
Leadership Institute Donors	19
Annual Fund Donors	21
100 Legacies in the Making	24
Financial Statements	25
How to Plant Seeds with the FarmHouse Foundation	27



# Message from the Chairman



Although the economy is still struggling to gain its footing, our members came through once again in 2011-12. Thanks to your support, the FarmHouse Foundation had another record-breaking fundraising year, and was able to provide the necessary financial support for leadership programs, scholarships, and other critical needs of our chapters.

Altogether **1,615** alumni and friends of FarmHouse contributed \$1,984,226 to the FarmHouse Foundation in 2011-12, including an impressive \$1,038,019 in unrestricted support (Annual Fund, Foundation Councils, and Building Funds), \$402,080 to endowment funds and \$544,127 to temporarily restricted funds.

Thanks to you, the Foundation was able to provide grants totaling a record \$1,703,956 for the following purposes:

- \$1,435,234 for educational portions of chapter houses;
- \$108,208 for leadership training and educational programs;
- \$71,576 for chapter computers and technology;
- \$45,955 for 88 members for academic scholarships;
- \$5,191 for foundation councils to use for educational purposes; and
- \$37,792 for support of the International Fraternity.

In April 2012, the Foundation held its 6th annual Power of Seven Seminar in Coeur d'Alene, Idaho. The Power of Seven Seminar is an award-winning program that brings together seven distinguished alumni, seven outstanding undergraduates, and members of the Foundation Board of Trustees and the International Board. The group discussed issues and trends that impact key sectors of our economy today, including agriculture, healthcare, real estate, energy and the financial sector. The group also focused on career and leadership development. As in previous years, the quality of the undergraduates involved in the forum was outstanding. **The legacy of FarmHouse is certainly in capable hands.**

On behalf of the FarmHouse Foundation, I would like to thank each of you for your generosity and support last fiscal year. Your decision to support the Foundation has helped FarmHouse advance its unique and important mission: *Building the Leaders of Tomorrow*. I am inspired by your commitment to FarmHouse and honored to have served as Chairman of the Foundation Board for the past two years. As I complete my time on the Board, I am confident that 2013 will be another successful year.

**Ryan Downs (NE '88)**  
**Chairman**  
**The FarmHouse Foundation**



Photos from the 2012 Power of 7 Seminar held April 27-29, in Coeur d'Alene, Idaho



# Message from the Executive Director



What a year! From the most humble gift to the most generous bequest, thank you! Because of you and 1,615 alumni and friends, the

FarmHouse Foundation received an unprecedented **\$1,984,226** in gifts during our 2011-12 fiscal year. Your generosity made it possible and we are immensely grateful for this record-breaking support.

Thanks to your generosity, the Foundation was able to award a record \$1.7 million in educational grants to the Fraternity and our undergraduates. This in turn provided FarmHouse young men with a positive fraternity experience and the opportunity to excel as moral, ethical and responsible leaders.

As a result, your investment in the FarmHouse Foundation provided:

- leadership growth for 130 chapter officers at the inaugural Leadership Institute;
- preparation for life after college through values-based personal development programs;
- academic excellence through much-needed scholarships;
- intensive personal leadership development for new members at the Emerging Talent Retreat;
- international awareness through study abroad opportunities and world travel experiences;
- chapter-based technological advancement to further support academic achievement;

- competitive and safe living/learning chapter housing; and,
- support of the International Office, our staff and unrestricted funding for programs not yet endowed.

We were able to accomplish a lot last fiscal year and are humbled and proud that over \$1.98 million was invested in our mission. Your generous philanthropy has impacted the lives of countless young men and provided the tools to help them fulfill their dreams and aspirations.

It is with deep appreciation and gratitude that we present the FarmHouse Foundation's 2011-12 Annual Report. As you read through the following pages, you will see the names of many of your FarmHouse brothers and friends who made FarmHouse a part of their charitable giving between March 1, 2011 and Feb. 29, 2012.

Some of you made a monthly gift by your credit card. Several used corporate matching gifts programs to multiply your goodwill and generosity. Many of you made a gift in honor or memory of a FarmHouse brother who influenced your life. Others have included FarmHouse in their estate plans and joined our 100 Legacies in the Making Campaign. We salute you, our loyal supporters, for your steadfast generosity and commitment.

Whatever level, whatever purpose—you play a powerful and critical part in Building Men in FarmHouse chapters across North America. Your philanthropy leaves a permanent and lasting tribute to

your chapter, your FarmHouse brothers and the future of FarmHouse.

As we look to a new fiscal year with significant goals in mind, we can't rest on our laurels. The need for support of the Fraternity's educational programs, safe and affordable housing, academic scholarships and leadership training are still greater than our funding capacity. I ask you to continue your commitment to the FarmHouse Foundation so that together we can provide more opportunities for young men to receive the rewarding and life-changing educational experience that FarmHouse provides.

Please join me in celebrating this successful year and in reaching even greater milestones in the future. I guarantee your investment in *Building the Leaders of Tomorrow* will be well worth it!

**Allison Rickels, CFRE**  
Executive Director  
The FarmHouse Foundation



*"Your interest and support of FarmHouse is having a huge impact on the lives of men all across the country. Thank you for everything you've done for me."* - **Jeremy Pelton (KS '08)**



# Foundation Board of Trustees

*It is the function of the Board of Trustees to advance and support the mission of the Fraternity and Foundation.*



Ryan Downs  
NE '88  
Chairman  
President  
Proxibid



Jim Herbert  
TN '61  
Chairman-Elect  
CEO  
Neogen Corp.



Mike Fayhee  
IL '67  
Attorney & Partner  
McDermott Will &  
Emery LLP



Darrell Godfrey  
IA '73  
Managing Director  
The Strand Group



Andy Jacobitz  
NE '85  
Vice President &  
Financial Advisor  
RBC Wealth Mgmt



Gary Ludwig  
IL '64  
President  
Heartland Insurance  
Company



Russ Roberson  
AU '78  
Vice President  
Quality &  
Regulatory Affairs  
GE Healthcare



Lee Thurber  
NE '91  
Ophthalmologist  
Ophthalmology  
Associates



Jim Tobin  
IA '73  
Vice President,  
Industry Affairs  
Monsanto Company



Jeff Topp  
ND '79  
Managing Partner  
T-T Ranch



Ron Vaske  
SD '87  
Partner  
Lindquist & Vennum

## Foundation Staff



Allison Rickels  
Executive Director



Bob Off  
CO '64  
Executive Director  
Emeritus



Andrea Ward  
Annual Giving &  
Communications  
Coordinator



Jo Berryman  
Administrative  
Assistant



# About the Foundation

## The FarmHouse Foundation | Business Plan Map

*This spring the Foundation examined our strategic plan, to better align with the Fraternity's new and impressive strategic vision of FarmHouse. Forward. While our FarmHouse. Forward objectives are Foundation-focused, overall the seven strategies align with the Fraternity's plan as we strive to achieve our collective mission.*

### Mission

Building the Leaders of Tomorrow

### Vision

The vision of the FarmHouse Foundation is to provide for the continuing development and growth of FarmHouse International Fraternity through fund raising activity, stewardship of Foundation resources and honoring the bequests of alumni and friends of the Fraternity who support the lasting, positive impact and influence of the FarmHouse experience in building men.

### Who We Are and What We Do

The FarmHouse Foundation is a duly organized public foundation which is exempt from federal income taxes and which may accept tax deductible gifts under Section 501(c)(3) of the Internal Revenue Code. The Foundation, through its Board of Trustees and Staff, organizes and administers various funding solicitations of FarmHouse members and friends of the Fraternity, and manages and administers the property and finances of the Foundation for the benefit of the student members of the Fraternity.



## Foundation Objectives

### #1 - Engaged & Accountable Leadership

Provide the financial resources, expertise, engagement and accountability to sustain and grow the funding for its operations and support of the Fraternity's educational programs and projects.

### #2 - Communications & Marketing

Communicate with FarmHouse members, parents and friends to encourage their philanthropic support of the educational benefits the Fraternity provides its members.

### #3 - Expansion & Membership Growth

Advocate for long-term sustainability by growing the number of investors and its financial resources as well as supporting the Fraternity's development of new chapters.

### #4 - Chapter Housing

Provide funding to foster the growth of FarmHouse Fraternity through the provision of competitive living/learning housing.

### #5 - Engaged Alumni Membership

Foster the development of actively engaged alumni who provide current and future leadership and support for the Foundation and Fraternity.

### #6 - Educational Programming & Chapter Operations

Provide funding for the Fraternity to build leaders who are effectively trained with market-valued skills by building ethical and responsible leaders and leaders who are good stewards of their own and others' resources.

### #7 - Celebrate FarmHouse!

Celebrate and recognize, in a meaningful way, members and friends who continue to invest their time, talent and treasure for the betterment of FarmHouse.



# What does the Foundation do?

## RAISES MONEY

In the 2011-12 fiscal year, The FarmHouse Foundation raised a record **\$1,984,226**, which included: \$1,038,019 for Unrestricted Funds (including the Annual Fund, Foundation Councils and Building Funds), \$402,080 for Permanently Restricted Funds and \$544,127 for Temporarily Restricted Funds. 1,615 donors made 2,492 gifts to the Foundation and this included 251 first-time donors. For fiscal year 2011-12, an investment of \$0.11 in total fund raising expenses resulted in \$1.00 return.

## INVESTS MONEY

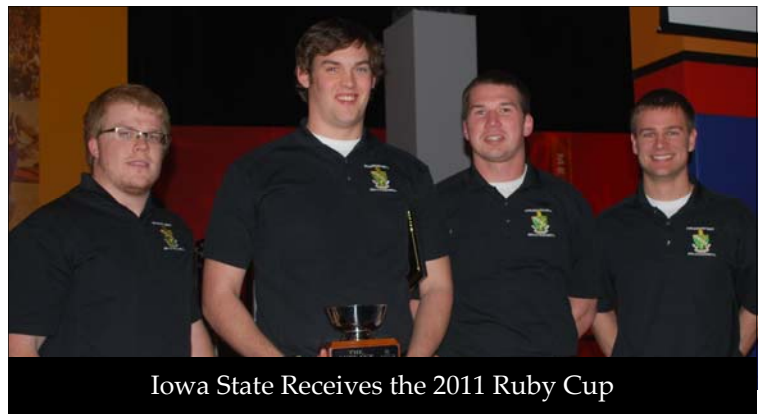
With the advice and assistance of Financial Counselors, Inc. brokerage firm, the Trustees invest the Endowment and other Foundation funds. The investment portfolio achieved a 5.1% return in 2011. The value of the Endowment was \$5,331,195 (as of 2/29/12).

## GRANTS MONEY

In the 2011-2012 fiscal year, the Foundation made grants totaling **\$1,703,956** in six areas:

- Leadership and Financial Management Training
- Computer Technology for Chapter Houses
- Re-contribution to Foundation Councils through the Annual Fund
- Educational Portion of Chapter Housing
- Scholarships
- Fraternity Support

*The following pages include a break-down of exactly where these grants were applied.*

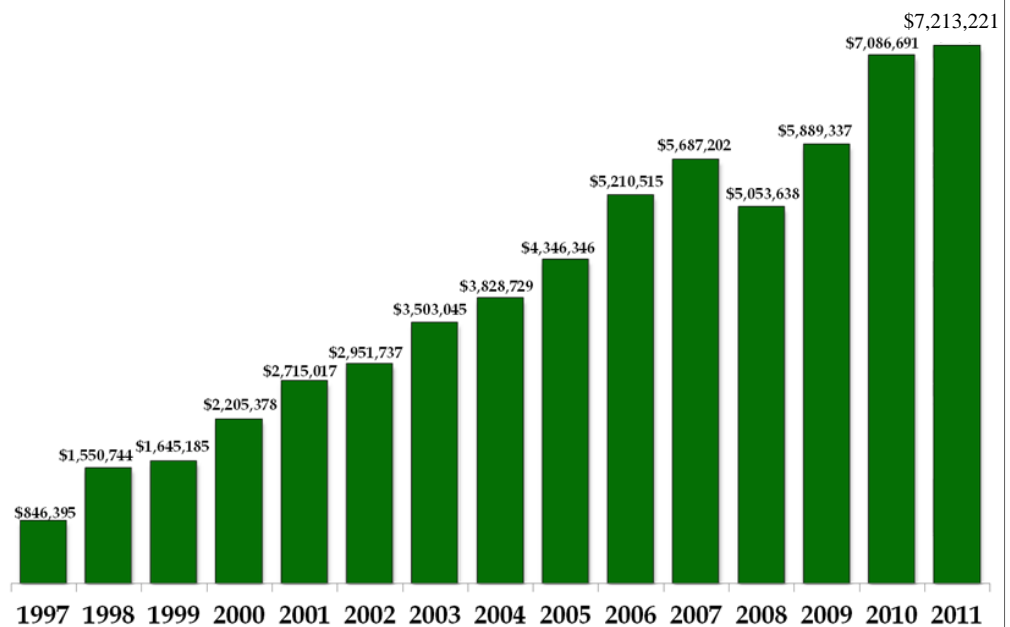


## Total Dollars Raised -

<u>Year</u>	<u>Dollars Raised</u>	<u># of Donors</u>
1997-98	\$332,676	1,409
1998-99	\$833,210	1,231
1999-00	\$595,304	1,106
2000-01	\$890,808	1,106
2001-02	\$919,540	1,208
2002-03	\$872,209	1,460
2003-04	\$678,917	1,508
2004-05	\$787,511	1,790
2005-06	\$946,021	1,707
2006-07	\$1,062,026	1,712
2007-08	\$864,638	1,708
2008-09	\$1,109,422	1,696
2009-10	\$982,299	1,663
2010-11	\$1,381,268	1,640
2011-12	\$1,984,226	1,615



## Total Assets of the Foundation-



# Programs

Thanks to you and other generous FarmHouse alumni and friends from across the country, the FarmHouse Foundation was able to provide the Fraternity **\$1,703,956** in funding for educational and leadership purposes in the 2011-12 fiscal year...

## What does this mean for the Fraternity and its members?

### Leadership Training & Educational Programs

**\$108,208** provided for leadership training and educational programs. Nearly 500 chapter members were directly affected, all 1,458 members were indirectly affected.

### FarmHouse Leadership Institute (FLI)

The FarmHouse Leadership Academy was expanded this year to become the Leadership Institute (FLI). Building upon 14 successful years of FLA, this year's FLI experience engaged attendees in a higher level of the "why" of leadership. For four intense days, January 5-8, 2012, 150 undergraduate leaders from across North America gathered in Kansas City, Mo., to explore, define and enhance their leadership skills. See page 21 for more information.

### Regional Leadership Conferences

The Regional Leadership Conference (RLC) series for FarmHouse and Ceres Fraternities is a leadership program geared toward all chapter members. They are held regionally in February during non-Conclave years.

### Power of 7 Seminar

This award-winning seminar is a first class think-tank on FarmHouse Fraternity and the nation. It's an informal forum on the international business climate and economy. Membership in The Power of 7 is limited to alumni who pledge to give \$7,000, a tax-deductible gift, to the Annual Fund. Seven top junior and/or senior undergraduate leaders also participate in this seminar in addition to FarmHouse Foundation Trustees and staff; members of the International Board and staff and their spouses.

### To Be and Become...Emerging Talent Retreat

The To Be and Become Retreat is a conference designed to build on the strengths and leadership potential of new members of FarmHouse. Each chapter is invited to send a man who has completed his first year of college. It is held each year in May at Camp Heartland outside of Kansas City.

### Support for Individual Chapters

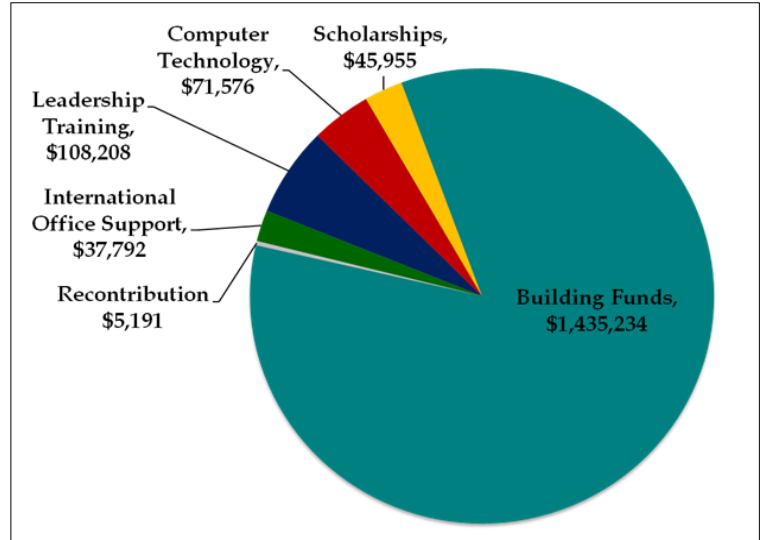
Through the chapters' Foundation Councils, the Foundation also provides support for local chapter programming such as chapter retreats and leadership training seminars.

### Fraternity's Chapter Consultation Program

Fraternity Educational Leadership Consultants visit each chapter and colony every year. They live in the chapter house for a few days, meeting with chapter officers and members. They then make recommendations for improvement and provide support following the visit.

### Association & Advisor Visit Education Program

Trained staff and volunteers travel to chapters to assess and monitor the effectiveness of the chapter advisory team leadership. They connect alumni volunteers with local chapters and associations and assist in training and educating advisors and association board members on topics and issues relevant to chapters and undergraduate students. *Continued on next page...*





# Programs, cont'd

## Academic Scholarships

One of the most visible acts of the FarmHouse Foundation is to offer brothers an opportunity to receive financial aid. Each year the Foundation offers scholarships which are open to all FarmHouse undergraduates. Last year the Foundation awarded \$12,250 in scholarships to 12 undergraduate members. Other scholarships that the Foundation administers, totaling \$33,705, were given to members of specific chapters as designated by the donors. The recipients of these scholarships were selected locally. In total, the Foundation awarded **\$45,955 to 88 individual members** last year. The winners of the FarmHouse International Foundation scholarships are pictured below. For more information on these men, visit [www.FarmHouse.org/Foundation](http://www.FarmHouse.org/Foundation).

## 2011-2012 Foundation Scholarship Winners



Jesse Bailey  
(KS '09)



Brian Buss  
(IL '11)



Jack Ehrke  
(NE '09)



Brian Gottlob  
(SD '08)



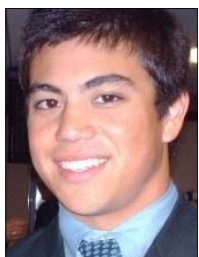
Scott Henry  
(IA '09)



Dakota Hoben  
(IA '10)



Andy Pringnitz  
(IA '09)



Trevor Ramsey  
(AU '09)



Andrew Tucker  
(MS '11)



Sean Vanden Heuvel  
(AU '09)



Liam Vincent  
(IA '09)



Matthew Wright  
(TR '09)

## Chapter/Local Scholarships awarded in FY 2011-12

### Lynn & Marilyn Benson Study Abroad Scholarship

William Vincent (IA '10)

### George & Grayce Berggren Scholarship

Joseph Lee (MN '09)  
Derek Mulhern (MN '08)

### Olin R. Branstetter Scholarship

Shannon Mallory (OK '10)

### William B. Bunn Memorial Scholarship

Brian Nelson (IL '09)

### Clifford E. Christenson Scholarship

Mathias Peterson (MN '09)

### Ralph Dralle Scholarship

Wayne Gehrke (IL '10)

### Phil Edgerley Scholarship

Brian Papp (IL '10)

### Mark Eidahl Memorial Scholarship

Jason Kaare (MN '08)

### FarmHouse Foundation Phone-a-thon Scholarships

Nick Erwin (ND '11)  
Sawyer Hawkins (MO '11)  
Garrett Hopkins (MO '11)  
Johnny Jankovich (MO '08)  
Jake Kolker (IA '10)  
Drew Mreen (MO '11)  
Wade Pittrich (MO '10)  
Greg Poulter (WIP '09)  
Michal Ratgen (ND '11)  
Daniel Rausch (MO '09)  
Shane Wehlage (ND '11)

### Carl Hertz Scholarship

Jordan Uthoff (IA '09)

### J.C. Holbert Memorial Scholarship

Luke Belzer (IA '10)  
Micah Hayek (IA '10)  
Matt Skarshaug (IA '10)

### Idaho Chapter Scholarships

Zach Arama (ID '07)  
Bryer Barmore (ID '10)  
Derek Cocking (ID '09)  
Drew Cruickshank (ID '09)  
Brian Dixon (ID '07)  
Evan Dixon (ID '10)  
Zach Dixon (ID '07)  
Aaron Gaide (ID '10)  
Blake Harris (ID '08)  
Ricky Kennedy (ID '08)  
Seth Massey (ID '10)  
Kyle Schab (ID '10)  
Ben Upper (ID '11)  
Jacob Varriale (ID '08)  
Kris Vowell (ID '09)  
Nick Warzyn (ID '11)

### Idaho Outstanding New Member Scholarship

Ben Upper (ID '11)

Continued on next page...



# Programs, cont'd

*"This scholarship comes as such a relief to me. Now I won't have to worry so much about making ends meet and can spend more time with my chapter.*

*Thank you for your investment in my future."* - Brian Gottlob (SD '08)

## Illinois Builder of Men Scholarship

Andrew Harmon (IL '11)  
Jonathon Seaman (IL '10)

## Illinois Chapter Scholarships

Daniel Guth (IL '10)  
Samuel Moses (IL '11)  
Eric Sommer (IL '10)  
Christopher Waddell (IL '11)

## Illinois FarmHouse Four-Fold Man Scholarship

Chase Bryan (IL '12)  
Adam Sommer (IL '12)

## Iowa FarmHouse Memorial Scholarship

Micah Hayek (IA '10)

## Kansas Chapter Scholarship

Matt Kiehl (KS '08)

## Robert Keefer Scholarship

Craig Hogan (IL '08)  
Brian Papp (IL '10)  
Daniel Schirding (IL '10)  
Jonathon Seaman (IL '10)

## William & Marie Kehr Scholarship

Isaac Salfer (MN '10)

## Michigan State Incoming Freshmen Scholarships

Alexander Barone  
Leighton Hackert  
Alicia Symanski  
Ryan Zimmerman

## Harold Morine Scholarship

Christian Butler (IL '10)  
Christopher Waddell (IL '11)

## Frank & Dorothy Mynard Memorial Scholarship

Brian Buss (IL '11)

## North Dakota State Founders Fund Scholarships

Michael Backman (ND '11)  
Micah Fraase (ND '09)  
Jared Nelson (ND '10)

## Ron Orth Freshman Scholarship

Will Cord (IA '11)

## Frances Russell Housemother's Helping Hand Scholarship

Kelton Stecklein (KS '11)

## Kevin Sandrock Scholarship

Levi DeSutter (IL '08)

## Sims Family Study Abroad Scholarship

Adam Talloctt (IL '10)  
Ross Wilken (IL '10)

## Striegel Scholarship

Zach Schmeiss (ND '10)

## Danny Weisz Memorial Scholarship

Nathan Costner (ID '09)

## Gaylord & Helen Wilson Scholarship

Scott Henry (IA '09)  
William Vincent (IA '10)



## Educational Portions of Chapter Housing

\$1,435,234 supported educational portions of chapter house construction and renovations on seven campuses. Currently 16 chapters and associations are raising funds with the Foundation for new construction or renovations of their chapter houses.

## Computers & Affiliated Technology

\$71,576 granted to eight chapters and associations for in-house computers and technology, affecting nearly all chapter members directly.

## Re-contribution to Chapters

\$5,191 distributed to chapters' foundation councils for their specific educational uses and needs through the Annual Fund's re-contribution program.

## Fraternity Support

\$37,792 paid to the International Fraternity for the Foundation's share of the International Office rent, support staff compensation, membership database, online communications to all members and the Foundation's portion of *Pearls & Rubies*.



# Honor Roll of Donors

The FarmHouse Foundation gratefully acknowledges the generous support received from donors. Each donation is personally acknowledged and directed toward the ongoing programs and services of the Foundation. All donations received during fiscal year (FY) 2011-2012 are acknowledged below. They are listed by lifetime giving clubs. Those in the H.K. Wilson Club and above will be listed every year in our annual Honor Roll.

The Foundation would be happy to add your name to the list of those making an investment in the "Building of Men" and is grateful for every gift, whatever the amount. Since the Foundation is a qualifying 501(c)3 organization, all gifts and donations are tax-deductible.

If you are interested in becoming a donor or if your name has been omitted or accompanied by incorrect information, contact the Foundation at (800) 722-1905. (*† denotes deceased*)

## CENTURY CLUB

(\$100,000 or more)

Justus M Ammons (NC '54)  
Ronald O Bergan (ND '62)  
Hilton M Briggs (IA '33) †  
Robert W Dahlberg (IA '47) †  
Kenneth R Davis (OK '83)  
Ricky J Davis (OK '80)  
Steven C Davis (OK '77)  
Jon D Ellis (IA '84)  
Jack G Haselbush (CO '67)  
Arthur W Heggen (IA '66)  
James L Herbert (TN '61)  
Jay Horton (AU '80) †  
Robert W Keefer (IL '51) †  
Richard D Kruse (KS '63)  
Randal L Linville (KS '73)  
William E Lloyd (IA '47)  
William S May (OK '38) †  
Alvin E McQuinn (MO '51)  
Cal G Messersmith (NE '61)  
Robin E Osborn (OK '75)  
Roy J Reiman (IA '55)  
Gary Schneidmiller (WA '68)  
Douglas D Sims (IL '65)  
Fay M Sims (IL '38) †  
Jerry D Stritzke (OK '80)

Herbert G Folken (IA '28) †  
Mark W Frasier (KS '77)  
Allen L Frederick (NE '63)  
Kenneth W Gorden (IL '42)  
Elmer R Graber (MI '52)  
Larry Hageman (OH '78)  
Erville W Hughes (NE '32)  
Rolf F Illsley (MI '39)  
Jay S Koths (MI '47)  
James A Lodoen (ND '79)  
Frank A Loeffel (NE '47)  
Morrison Loewenstein (NE '35)  
John P Miller (IA '42) †  
Jeffrey P Muchow (SD '66)  
G Richard Munson (KS '73)  
Robert L Off (CO '64)  
Don Wyatt Rader (OK '43)  
T Russell Reitz (KS '25) †  
S Dean Sims (IL '37) †  
Robert L Skinner (IA '46) †  
John D Slay (IT '85)  
Dominic Sokolosky (OK '76)  
Charles W Stuber (NE '49)  
E Thomas Thurber (NE '60)  
James P Tobin (IA '76)  
Jeffrey O Topp (ND '79)  
William L Tucker (KY '51)  
Billy H White (NC '55)  
James S Wieland (ND '72)  
Allen Wolff (MI '51)  
Clayton Yeutter (NE '49)

## 1905 CLUB

(\$10,000 to \$24,999)

James D Ballard (MI '51)  
Homer W Barnett (MN '40) †  
William F Bennett (OK '49)  
Paul C Bicket (OK '71)  
Fredrick A Bliss (NE '57)  
Sherrill Brinkley (NC '55)  
L E Castle (OK '47)  
Kenneth L Converse (SD '81)  
Reid W Crawford (IA '70)  
Randall L Crom (IA '76)  
Don R Cruise (NE '63)  
C Dean Dobbins (PU '67)  
Wayne A Engstrom (WA '60)  
Christopher E Frasier (CO '80)  
Carlyle Gauger (IA '37)  
Darrell D Godfrey (IA '73)  
James D Griffith (MO '91)  
Dale D Grosvenor (NE '43)  
Gary L Hansen (SD '72)  
Clark W Hanson (MN '61)  
Christopher T Hege (NC '96)  
Bryce L Hodgden (OK '62)  
Cody B Hodgden (OK '89)  
Mark A Jirik (ND '95)  
Dewey Johnson (CO '49)  
Michael B Johnson (OK '83)  
Ronald D Kay (IA '53)  
Robert C Keen (AU '71)  
Wayne F Keim (NE '42)

James A Kelly (AU '81)  
Jarrett D Kruska (OK '93)  
Eric H Lahlum (ND '89)  
Kenneth L Larson (IA '52)  
Gary L Ludwig (IL '64)  
Ronald L Marlow (NC '68)  
Charles E Martin (IL '48)  
Raymond F Mazur (NE '45)  
Birch L McMurray (NC '54)  
Michael L Miller (KY '65)  
Scott D Nagel (MN '85)  
Owen J Newlin (IA '50)  
Ronald T Noyes (OK '56)  
William M Ongstad (ND '70)  
Kenneth W Overhults (KY '60)  
James V Parochetti (IL '59)  
Don Wyatt Penner (NE '84)  
Rodny D Penner (ND '59)  
James Pfeiffer (OK '76)  
Eugene B Pickler (NC '54)  
Kevin J Rehder (SD '03)  
Randall R Rodgers (IL '66)  
Gary F Roewe (IA '65)  
Hugo Rogers (AU '71)  
Lee D Sandager (MN '46)  
Jerry C Schmidt (OK '67)  
Roger A Selley (IA '60)  
Dale L Shaw (MI '63)  
Isaac Sheppard (MI '54)  
David A Smith (NC '56)  
George E Smith (NC '74)  
Riley W Smith (IA '01)  
Darl E Snyder (IA '42)  
John F Stollsteimer (MI '51)  
Noel W Stuckman (PU '54)  
Eldon A Tesson (MN '47)  
Mark A Trexler (NC '77)  
Harold J Tuma (KS '52)  
Vincent L Ulstad (ND '78)  
Stuart W Weibert (KS '66)  
Joel T Weigand (KS '63)  
Charles R Younts (NC '56)  
S Eugene Younts (NC '54)  
Donald D Zimmerman (IA '54)

## FOUNDATION CLUB

(\$5,000 to \$9,999)

Jack Anderson (KS '62) †  
Patrick H Backman (ND '83)  
David J Ballard (MI '76)  
H Maurice Beaver (IA '40)  
Lloyd A Bettis (IA '67)  
Kenneth R Bolen (IL '61)  
John W Bowers (OK '02)  
David H Boyne (MI '54)  
Richard C Brantner (IL '73)  
Wayne E Brownlee (KS '59)  
Scott A Carlson (ND '84)  
Kenneth Chace (MI '66)  
Verne E Claussen (KS '64)  
Scott L Cormack (OK '77)  
David A Daniel (ID '73)  
Warren J Davis (PU '58)  
Emerson B Deese (NC '55)

## Chapter Abbreviations Used in this Annual Report

AL	University of Alberta	NE	University of Nebraska-Lincoln
AR	University of Arkansas		
AU	Auburn University	NEC	University of Nebraska-Curtis
CL	Clemson University	NM	New Mexico State University
CO	Colorado State University	OH	Ohio State University
CPP	California Polytechnic State University-Pomona	OK	Oklahoma State University
		OR	Oregon State University
GA	University of Georgia	PU	Purdue University
GU	University of Guelph	SD	South Dakota State University
HM	Honorary Member	SLO	California Polytechnic State University-San Luis Obispo
IA	Iowa State University		
ID	University of Idaho	TAM	Texas A&M University
IL	University of Illinois	TS	Tarleton State Colony
ILS	Illinois State University	TN	University of Tennessee
KS	Kansas State University	TNT	Tennessee Technological University
KY	University of Kentucky		
MHS	Morehead State University	TR	Troy University
MI	Michigan State University	TT	Texas Tech University
MN	University of Minnesota	UCD	University of California-Davis
MO	University of MO	VT	Virginia Tech
MS	Mississippi State University	WA	Washington State University
MT	Montana State University	WI	University of Wisconsin- Madison
NC	North Carolina State University	WIP	University of Wisconsin-Platteville
		WK	Western Kentucky University
ND	North Dakota State University	WV	West Virginia University
		WY	University of Wyoming

James A Deutsch (PU '68)  
Edward D Discoe (NE '85)  
Gaylon Dykstra (SD '78)  
James A Erramouspe (NM '90)  
W Richard Folsche (KS '56)  
John C Foltz (OH '55)  
Fred C Francis (IL '37) †  
Curtis A Frasier (KS '70)  
Jerry L Gardner (KS '59)  
H Edward Gates (NE '58)  
David C Gilmore (IL '86)  
George G Greenleaf (MI '46)  
J Stanley Hargleroad (NE '55)  
L Craig Harris (IA '65)  
Ralph E Harrison (OK '69)  
Rollin D Herman (ND '74)  
Craig W Hertel (NE '75)  
Larry K Hiller (IA '59)  
Jeff Hood (ID '87)  
Dwight N Jackson (KS '57)  
Milton D Jellum (MN '53)  
Kevin L Jordan (OK '74)  
Lloyd G Knight (ND '58)  
Donald W Kvasnicka (MN '51)  
George H Lauff (MI '45)  
Jay E Lockhart (PU '65)  
Eric D Maaske (NE '93)  
Thomas R McDougall (ND '84)  
Laverne J McGinnis (IL '62)  
Kevin C Meyer (NE '85)  
Steven Meyer (OK '76)  
Dan Moore (SD '93)  
Donald S Morris (NC '58)  
Brett M Morrison (NE '88)  
Donald L Mosher (IL '39)  
Jeffrey M Norris (TT '89)  
Leon J Patton (KS '70)  
H Robert Penner (NE '86)  
Donald H Pettengill (MI '58)  
Roger C Pine (KS '58)  
Eric K Poppe (NE '88)  
Lawrence Ramsey (TN '61)  
Gyles W Randall (MN '60)  
John B Riley (KS '79)  
David D Rock (KS '77)  
Ray R Schooley (KS '57)  
Ronald R Schultz (KS '57)  
Jeremy Settles (NM '94)  
Rick A Setzer (NC '65)  
Richard L Shafer (OK '63)  
Roger P Sindt (NE '62)  
Henry C Sink (NC '98)  
Thomas E Stanford (OK '63)  
Vern R Stewart (WY '50)  
Walter T Stinson (NC '54)  
Richard C Stroh (ID '73)  
Dale E Stuby (MI '53)  
Kenneth O Summerville (NC '55)

Bruce Swanson (ND '70)  
Fred Swirbul (OR '79)  
Darrell J Thompson (MI '52)  
Lee T Thurber (NE '91)  
Terrence Tobin (IA '76)  
Robert Totusek (OK '46)  
Dean S Tribby (MI '51)  
James E Turner (NE '54)  
Donald Uchtmann (IL '66)  
Robert E Walton (OK '50)  
Peter J Wenstrand (IA '70)  
Dennis T Worley (NC '76)

## FOUNDATION FELLOWS

(\$1,000 to \$4,999)

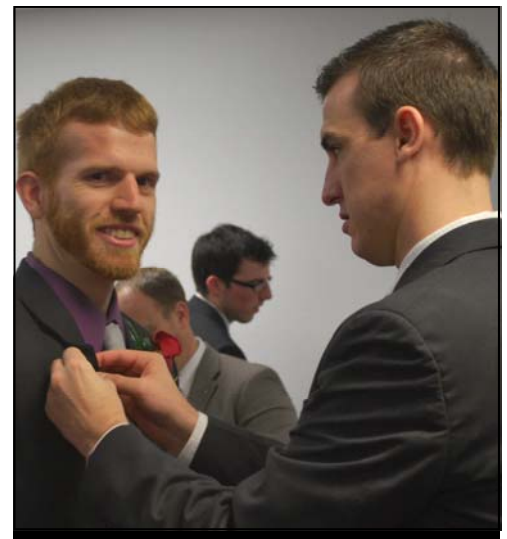
James A Aasland (IA '59)  
William H Adams (NC '63)  
Kevin J Albrecht (SD '88)  
Leonard L Allen (NC '58)  
David B Anderson (NE '89)  
Robert P Anderson (NM '87)  
Dave P Anton (IA '65)  
Larry I Anton (IA '61)  
Barry A Aves (IL '80)  
Harold S Aycock (MS '65)  
Billy N Ayscue (NC '56)  
Kevin A Bachmeier (ND '82)  
Timothy G Backman (ND '80)  
Ralph E Bailey (PU '69)  
Tarlton H Bailey (OK '71)  
Larry L Baker (NE '89)  
Bruce D Ballard (MI '81)  
Kenneth R Barker (NC '54)  
Thomas G Barrett (IA '66)  
Edward R Barton (MI '57)  
Kyle C Bauer (KS '77)  
Ralph E Beadle (CO '62)  
Timothy C Becker (IA '90)  
Richard L Bengtson (WY '62)  
James Bentley (MI '64)  
Eric K Berg (MN '77)  
James B Berg (ND '76)  
Brenton S Bible (PU '93)  
James A Bilyeu (IL '66)  
Charles R Binau (IA '59)  
R David Bitting (IL '81)  
Fredrick L Blackmar (AU '74)  
Robert E Blahnik (MI '91)  
Edward H Blankenship (AU '84)  
John J Bloomfield (KS '98)  
Wilbur L Bluhm (NE '46)  
William H Bogue (IA '65)  
Karl A Bollingberg (ND '82)  
Rolf A Bollingberg (ND '85)  
Steven C Borgelt (MO '76)  
Phil R Bornemann (OK '64)  
William L Bortel (MI '53)  
John Bortins (MI '69)

Continued on next page...



# Honor Roll of Donors, cont'd

G Lynis Dohm (KS '61)  
 D Howard Doster (OH '55)  
 Steven D Drendel (ILS '83)  
 William H Dubbert (IA '49)  
 Harold F Duis (NE '33)  
 Cameron K Dunlap (NM '93)  
 Craig Dybedahl (SD '78)  
 Steve A Eberhart (NE '49)  
 Joseph L Edgar (CO '63)  
 Tarry L Edington (MI '61)  
 Matthew L Edman (MN '53)  
 Philip O Edwards (ID '57)  
 William M Edwards (IA '67)  
 William G Eisinger (ID '72)  
 James D Elmer (IL '54)  
 Marvin L Enslin (MN '65)  
 Donald J Epp (NE '58)  
 Noel S Erovick (ND '99)  
 Kenneth I Fawcett (IA '68)  
 John R Ferebauer (ID '67)  
 Bernard W Ferguson (NC '58)  
 Justin J Feucht (MN '50)  
 A Corby Fichter (IA '78)  
 Steven L Fields (ID '65)  
 Dan L First (MI '79)  
 David H Fleske (KS '73)  
 John C Foltz (OH '79)  
 Richard E Ford (IA '54)  
 Joseph F Forner (MN '87)  
 Clinton R Foss (IA '01)  
 Daniel Fowler (NC '96)  
 Ron K Fraase (ND '75)  
 Joe L Frasier (KS '75)  
 Gaylord H French (NC '57)  
 Jim Frevert (IA '58)  
 Kevin L Gantt (NC '85)  
 Ray A Gard (NE '50)  
 Gregory A Gartrell (KS '73)  
 Malcolm E Gigstad (KS '61)  
 William D Givan (TN '59)  
 Charles W Glenn (KS '42)  
 Justin J Goettle (ND '02)  
 Phillip D Goforth (NC '64)  
 Gordon E Goldsmith (IA '44)  
 Brock H Goodwin (AU '98)  
 Larry E Goostrey (MI '76)  
 L Steven Grasz (NE '81)  
 Robert E Graves (MO '68)  
 Harley E Gray (NC '54)  
 David M Greene (NC '93)  
 Glen C Grider (OK '80)  
 Wayne M Grover (KS '59)  
 Kevin M Haas (IL '80)  
 Scott A Hackett (WA '88)  
 Larry G Hadachek (KS '76)  
 William B Hall (NC '65)  
 Max J Hamrick (NC '65)  
 Cedric K Hands (KS '72)  
 Dixon L Harper (IA '47)  
 Mike H Harper (CO '86)  
 Chad E Harris (IA '98)  
 Duane G Harris (IA '63)  
 Edward M Harris (NC '71)  
 Jared Harrison (OK '00)  
 Kenneth E Harrison (ID '57)  
 Darren W Havens (IL '92)  
 Jonathan A Hawley (PU '98)  
 Jimmie Jack Heathman (MO '57)  
 Randy B Hefner (NC '68)  
 Phillip J Heisner (IL '94)  
 Ricky J Helget (SD '88)  
 Matthew J Helms (IL '93)  
 Lynn O Henderson (IA '71)  
 Adam Herford (MI '98)  
 Wendell D Herman (ND '67)  
 Christian K Hertelky (CO '80)  
 Joel R Hertz (IA '57)  
 Donald L Heuermann (NE '56)  
 Douglas R Hill (ND '73)  
 Harold H Hodson (IA '59)  
 Maynard G Hogberg (IA '64)  
 Brian Hogue (TAM '05)  
 William L Hollis (IL '89)  
 Robert E Holm (PU '59)  
 Glenn M Holmes (IL '50)  
 Eugene B Hook (MN '51)  
 Robert H Hornbaker (OK '78)  
 Loren B Horsager (MN '89)  
 Keith W Houghton (KS '69)  
 Robert G Housedorf (MI '52)  
 Dennis W Hovelson (MN '72)  
 David L Howell (MI '62)  
 Ken A Hudgeons (OK '71)  
 Wallace E Huffman (IA '64)  
 James P Hultgren (IA '65)  
 Merle W Hunt (IA '42)  
 Stephen B Huseman (OK '91)  
 Charles M Huskey (NC '72)  
 Nathan J Huso (ND '77)  
 Theodore Hutchcroft (IA '51)  
 Gregory A Ibach (NE '81)  
 Donald B Irwin (IA '65)  
 Terry H Jaspers (SD '74)  
 Milford H Jenkins (OK '83)  
 John W Jensen (IA '64)  
 Judson J Jesske (NE '88)  
 Brian K Johnson (IL '90)  
 Dean A Johnson (CO '59)  
 James D Johnson (CO '56)  
 Laurence F Johnson (IL '65)  
 Maurice E Johnson (ID '57)  
 Byron E Jones (IL '59)  
 Robert Jones (ID '57)  
 Charles R Jorgensen (IA '55)  
 William L Justice (KS '56)  
 Thomas O Kajer (MN '80)  
 Gerald L Karr (KS '57)  
 Kenneth W Kassel (IA '76)  
 Paul C Kassel (IA '75)  
 William F Keish (MI '61)  
 Charles D Keller (KS '55)  
 Earl D Kellogg (SD '60)  
 Kris Kelly (NM '02)  
 James Kemp (CO '52)  
 Stewart M Kennedy (OK '91)  
 Dale A Kennen (MN '60)  
 Wayne C Kennen (MN '65)  
 Alois F Kertz (MO '64)  
 Ralph H Ketchie (NC '69)  
 James W Key (OK '85)  
 John G Kirkpatrick (OK '59)  
 Michael D Kirkpatrick (PU '73)  
 James R Klande (MN '64)  
 Glenn Klein (OR '79)  
 Cernyw K Kline (MI '43)  
 Gerald E Klonglan (IA '55)  
 Ralph J Knobel (NE '52)  
 John Koepfle (MI '56)  
 Robert L Kollmorgen (IA '57)  
 John R Konkle (PU '74)  
 Thomas J Kopaček (MN '70)  
 Kim D Krehbiel (KS '79)  
 Gary R Krieger (ND '72)  
 Jeremy D Krone (OH '00)  
 Gerald J Kugel (MI '52)  
 Gerry L Kuhl (MI '65)  
 John Z Labrier (TT '82)  
 Jerry R Ladman (IA '55)  
 F Dale Laible (IL '47)  
 Gregory P Lardy (ND '88)  
 Brian T Larson (MN '67)  
 Ronald J Lauer (ID '70)  
 Durwood Laughinghouse (NC '68)  
 Stanley B Laures (IA '61)  
 Eric J Lee (MN '86)  
 Thomas F Lee (NC '73)  
 William E Lee (IL '80)  
 Gregory R Leet (KS '77)  
 Chris H Lembecke (CO '67)  
 Gary Lemme (SD '87)  
 James L Lindquist (KS '70)  
 G Irvin Lipp (IL '64)  
 Keith A Littlefield (IA '64)  
 Lawrence E Lloyd (ID '79)  
 Michael R Loenser (IA '90)  
 Steven M Lonergan (IA '85)  
 Robert A Longenbaugh (CO '54)  
 Chris B Lovekamp (IL '75)  
 Donald H Lowenberg (IA '52)  
 Kent A Lucken (IA '83)  
 Sammie P Mackey (OK '81)  
 Brett E Madison (IL '81)  
 Roger R Madison (MN '62)  
 Thomas J Madson (SD '84)  
 Thomas R Magill (ND '85)  
 Bryan E Malone (MN '91)  
 David F Malone (NE '67)  
 William J Mannlein (NE '53)  
 Terry K Manz (KS '62)  
 Ricky A Marsh (OK '78)  
 David F Martin (KS '65)  
 Loys L Mather (NE '59)  
 Bradley D Matt (IA '98)  
 Allen R Mayo (PU '60)  
 Patrick McAllister (SD '79)  
 James M McBee (PU '80)  
 Thomas E McCall (NC '59)  
 Brian M McCann (MS '95)  
 Byron S McDaniel (MO '39)  
 Lyman L McDonald (OK '60)  
 Jeff A McDowell (AU '76)  
 Eric J McEwen (IL '91)  
 Michael P McGinn (KS '90)  
 Ryan J McKenna (IA '96)  
 Grady S McMurtry (TN '67)  
 Kenneth A McNeal (MS '90)  
 Grover C McPherson (NC '54)  
 William G McVay (PU '52)  
 James B Meinhardt (KS '94)  
 David M Mensing (SD '01)  
 Richard L Meyer (MN '57)  
 Paul J Meyers (MN '67)  
 Steven M Michaud (IA '83)  
 David W Mies (IL '67)  
 Charles D Miksch (KS '55)  
 Bradley L Milbrath (SD '96)  
 Cletus R Mitchell (PU '52)  
 Roger C Mohrman (IL '50)  
 William G Moody (KY '53)  
 Kent L Moore (KS '85)  
 David L Morris (IA '62)  
 John Morris (PU '62)  
 John C Morris (IA '71)  
 Mark O Morris (OK '92)  
 Ronald L Morse (NE '59)  
 Rodney G Moseman (NE '68)  
 Matthew J Moyer (NC '94)  
 Daniel Muth (NM '93)  
 Gary L Myers (SD '71)  
 Louis L Myers (IL '56)  
 Donald R Myrtue (IA '60)  
 Richard J Naskali (ID '70)  
 Rene R Neff (PU '52)  
 Chris A Nelson (SD '83)  
 Eric F Nelson (IA '81)  
 Richard E Nelson (IA '43)  
 Gene H Nesbitt (CO '60)  
 Stephen S Nicholson (IA '75)  
 I Wayne Nielsen (NE '49)  
 Wayne V Northey (IA '54)  
 John Norton (MI '51)  
 James O'Connell (MT '91)  
 Charles M Oellermann (NE '77)  
 Myron W Off (CO '85)  
 Charles Oldham (IA '56)  
 Jeffrey T Olson (SD '83)  
 Ronald D Olson (IA '67)  
 Karl Oltmanns (OK '84)  
 George W Orr (CO '54)  
 Phillip M Osteno (MN '60)  
 Jacob J Parker (NC '70)  
 Gary W Paulson (ND '64)  
 Daniel R Pearson (MN '73)  
 Josh Peck (OK '96)  
 Don E Pennington (PU '56)  
 Bradley A Peterson (CO '77)  
 Leslie W Peterson (MN '48)  
 Loren G Peterson (NE '75)  
 Carl L Pherson (MN '64)  
 Victor C Pierrot (IA '61)  
 Milton L Pietz (MN '47)  
 Allyn J Plambeck (IA '64)  
 William E Plummer (NC '67)  
 Frank Postma (IA '59)  
 Dale W Pracht (KS '92)  
 Raymond L Prewett (OK '64)  
 Douglas A Pringnitz (IA '81)  
 Kenneth E Pruitt (MO '51)  
 Thomas A Puckette (OK '75)  
 Steven G Pueppke (MI '69)  
 Douglas E Punke (IL '82)  
 Kenneth L Quinn (IL '82)  
 David L Rahe (IL '76)  
 Ted E Rasmussen (NE '83)  
 James H Ray (NE '58)  
 Bill J Reed (TN '73)  
 Francis L Reichart (KS '54)  
 Joel D Reiman (MN '96)  
 Keith H Remy (IA '52)  
 Tracy V Remy (IA '54)  
 Gerald F Richards (MI '47)  
 David W Richardson (OK '84)  
 Ben Ritter (MI '96)  
 Paul Roamer (CPP '88)  
 Russell L Roberson (AU '78)  
 Patrick J Robinson (KY '98)  
 Andrew G Robison (NE '91)  
 John E Rockwell (ID '70)  
 Eugene E Rodberg (IA '85)  
 Daniel J Roh (NE '75)  
 Floyd E Rolf (KS '42)  
 Myers M Rossiter (IA '49)  
 Mitchell Roth (MI '70)  
 James C Rupp (CO '82)  
 Clinton P Rusk (KS '79)  
 Jim Russell (MO '59)  
 Ronny C Russell (AU '89)  
 Rusty Rust (OK '84)  
 A John Scheidenhelm (IL '50)  
 Delbert C Scheider (IA '48)  
 Doug J Schemmer (IL '90)  
 Douglas J Schlagel (CO '91)  
 Darin L Schmidt (OK '93)  
 Walter H Schmidt (NE '54)  
 John E Schmoock (OK '47)  
 John W Schrader (KS '63)  
 Lawrence Schrader (KS '60)  
 Marvin C Schrader (MN '56)  
 Gene L Schreiber (WY '51)  
 Brian J Schulz (MI '91)  
 Jeff Schulz (MI '99)  
 Duane H Schurman (ND '69)  
 Gerald D Schwab (MI '88)  
 James E Schwartz (PU '65)  
 William Schwartz (PU '67)  
 Eugene R Scott (NE '53)  
 Robert Seiber (OK '59)  
 Larry M Seitz (KS '59)  
 Bren Seki (CPP '82)  
 Gene W Selk (NE '65)  
 Dwight M Shappell (IA '51)  
 Terry J Shaw (OK '65)  
 James B Shirley (MS '88)  
 Richard O Shuler (IA '64)  
 Michael F Siefert (ILS '01)  
 Darold Simpson (MI '57)  
 Robert H Sindt (NE '69)  
 Russell J Sindt (NE '65)  
 David P Skarshaug (IA '80)  
 Richard Skillen (MI '55)  
 Edward E Sletton (MN '40)  
 John A Smartt (CO '55)  
 Allen J Smith (AU '86)  
 Keven D Smith (MN '77)  
 Wallace Smith (OK '52)  
 Wayne E Smith (PU '65)  
 Nathan D Smithson (MN '96)  
 Curtis O Snodgrass (NE '85)  
 Carroll J Southards (NC '54)  
 Thomas E Speer (IA '73)  
 Peter W Spike (MI '60)  
 William J Spivey (NC '89)  
 M Andy Sprague (IL '86)  
 Marion E Stanley (CO '52)  
 Dan Stark (CPP '82)  
 Loren E Staroba (ND '72)  
 Wayne D Steffen (WA '73)



*"I know that what we do as a chapter wouldn't be possible without the support of alumni like you. Thank you for making my time in FarmHouse the best opportunity and experience of my life."*

**- Micah Fraase (ND '08)**

*"My involvement in FarmHouse has sincerely been the greatest experience of my life. The life skills and connections I've made in FarmHouse have had a profound influence on the man I am now and will certainly shape the man I am in the future. Thank you for your generosity in making this tremendous organization possible."*

**- Issac Salfer (MN '10)**

*"I really appreciate your support. Because of you, we learned so much at FLI that we were able to take back to our chapter. Thank You!"*

**- Mitch Behrends (ILS '09)**



Continued on next page...







# Honor Roll by Chapter

The FarmHouse Foundation gratefully acknowledges the generous support received from donors. Each donation is personally acknowledged and directed toward the ongoing programs and services of the Foundation. All donations received during fiscal year (FY) 2010-2011 are acknowledged here. They are listed by chapter, in order of founding.

The Foundation would be happy to add your name to the list of those making an investment in the "Building of Men" and is grateful for every gift, whatever the amount. Since the Foundation is a qualifying 501(c)3 organization, all gifts and donations are tax-deductible.

If you are interested in becoming a donor or if your name has been omitted or accompanied by incorrect information, contact the Foundation at (800) 722-1905. (+ denotes deceased)

## MISSOURI

Cullan Barkau ('10)  
Raymond H Bayer ('11)  
Hayden Berry ('11)  
Chester D Black ('48)  
Kevin K Boggs ('79)  
Steven C Borgelt ('76)  
Mark K Broughton ('91)  
Zachery K Brown ('11)  
Tanner C Bryant ('11)  
Mark Buerck ('11)  
Aaron Burger ('11)  
Philip H Burger ('83)  
Steven M Burger ('81)  
Keith M Byergo ('48)  
Gerald D Coorts ('51) †  
Derek Cox ('11)  
Drew M Cox ('10)  
Jerry S Cox ('60)  
Seaver Cox ('09)  
Alex Davis ('11)  
Dexter Deeds ('12)  
George DuMontier ('11)  
Alex M Eckert ('90)  
Phillip Eiberger ('11)  
Robert G Eisenhauer ('64)  
Jeremy S Essner ('11)  
Michael Everson ('11)  
Tanner Fagan ('11)  
Ryan Fuller ('12)  
Max Garrison ('09)  
Brannon C Gore ('10)  
Robert E Graves ('68)  
James D Griffith ('91)  
Tyler Grindstaff ('09)  
Sam J Hallett ('11)  
Harrison S Hamilton ('11)  
Nik Hargarten ('10)  
Sawyer Hawkins ('11)  
Jimmie J Heathman ('57)  
Coby Holland ('11)  
Donald Hollingsworth ('45)  
Garrett Hopkins ('11)  
Johnny J Jankovich ('08)  
Corey Johnson ('09)  
Chris Jones ('11)  
Nick Jones ('10)  
R Harley Kennedy ('39)  
Alois F Kertz ('64)  
Gabe Kielhofner ('11)  
Jason M Kirby ('11)  
Trent Kruessel ('11)  
Huntley T Leverenz ('11)  
Ryan Lewis ('11)  
Kyle Lindner ('11)  
Jason J Lipsey ('88)  
Christopher N Lueders ('97)  
Cody Luke ('09)  
Taylor Martin ('10)  
Byron S McDaniel ('39)  
Tyler D McQuinn ('11)  
Charles R McQuitty ('52)  
Thomas Mershon ('12)  
John M Middleton ('11)  
Stephen Moorkamp ('11)  
Nickolas Morehead ('10)  
Collin Mouse ('11)  
Connor C Moylan ('11)

Kevin Moylan ('09)  
Drew Mreen ('11)  
Kellen Mumm ('09)  
Randy D Oberdiek ('81)  
Rhett Obermann ('11)  
Matthew M O'Brien ('2011)  
Chad Oser ('11)  
Keith J Pittrich ('82)  
Wade Pittrich ('10)  
Kenneth E Pruitt ('51)  
Scott Reifeis ('10)  
Benjamin Reifschneider ('10)  
Nick Reimler ('11)  
Mike Revis ('10)  
Cort Rippentrop ('10)  
Brent Rogers ('09)  
Ryan O Rolwing ('11)  
Johnny Runzel ('11)  
Jim Russell ('59)  
John L Saunders ('61)  
Nicholas A Schasch ('11)  
Mark P Schnefke ('11)  
Daren Schneider ('11)  
Jordan Showalter ('11)  
Ethan M Stallings ('11)  
Scott Stanley ('11)  
Joseph G Stephens ('93)  
Stuart M Strom ('11)  
Nicholas M Stueven ('11)  
John L Tomasovic ('53)  
Brett Walker ('11)  
John D Wilhite ('11)  
Daniel Williams ('12)  
Parker A Williams ('11)  
Jacob R Wilson ('11)  
Perry R Winn ('54)  
Schafer M Wood ('11)  
Daniel Wopata ('09)  
Matthew Xamis ('09)

## NEBRASKA

David B Anderson ('89)  
Rolan E Anderson ('50)  
Larry L Baker ('89)  
Thomas L Bentley ('90)  
Gregory G Bergen ('75)  
Fredrick A Bliss ('57)  
Wilbur L Bluhm ('46)  
John A Burbank ('54)  
Michael Chatt ('66)  
Glenn A Claybaugh ('48)  
Don R Cruise ('63)  
Michael C Dannehl ('78)  
Jack A DeWulf ('47)  
Edward D Discos ('85)  
Ryan D Downs ('88)  
Carl Dudzinski ('99)  
Harold F Duis ('33)  
Steve A Eberhart ('49)  
Donald J Epp ('58)  
Allen L Frederick ('63)  
Mark L Freese ('78)  
Thomas E Furtak ('68)  
Ray A Gard ('50)  
H Edward Gates ('58)  
L Steven Graszy ('81)  
Dale D Grosvenor ('43)  
Alan H Hanks ('71)

J Stanley Hargleroad ('55)  
Gregory E Hegemann ('92)  
Jeffrey D Heinrich ('02)  
Craig W Hertel ('75)  
Donald L Heuermann ('56)  
Harold R Hughes ('59)  
Gregory A Ibach ('81)  
Judson J Jesske ('88)  
Richard W Johnson ('54)  
Dale G Jundt ('61)  
Neal A Kanel ('04)  
Nicholas W Kauffman ('03)  
Wayne F Keim ('42)  
Ralph J Knobel ('52)  
James W Krause ('74)  
James W Lancaster ('94)  
Frank A Loeffel ('47)  
Eric D Maaske ('93)  
David F Malone ('67)  
William J Mannlein ('53)  
Loys L Mather ('59)  
Robert M McNeff ('58)  
Cal G Messersmith ('61)  
Kevin C Meyer ('85)  
Jeffrey S Monzu ('89)  
Brett M Morrison ('88)  
Ronald L Morse ('59)  
Rodney G Moseman ('68)  
I Wayne Nielsen ('49)  
Charles M Oellermann ('77)  
Shawn P Pebley ('94)  
H Robert Penner ('86)  
Rodny L Penner ('84)  
Loren G Peterson ('75)  
Eric K Poppe ('88)  
Ted E Rasmussen ('83)  
James H Ray ('58)  
Andrew G Robison ('91)  
Daniel J Roh ('75)  
James E Samsel ('66)  
Matthew T Schaefer ('04)  
Derek A Schardt ('07)  
Walter H Schmidt ('54)  
Thomas P Schwarz ('78)  
Eugene R Scott ('53)  
Gene W Selk ('65)  
Alvin W Siffring ('54)  
Robert H Sindt ('69)  
Roger P Sindt ('62)  
Russell J Sindt ('65)  
Curtis O Snodgrass ('85)  
Scott A Spilker ('78)  
Ray A Stevens ('60)  
Charles W Stuber ('49)  
Leroy V Svee ('61)  
David E Swan ('91)  
Lee T Thurber ('91)  
E Thomas Thurber ('60)  
Dennis A Toalson ('91)  
John J Toy ('77)  
James E Turner ('54)  
Raymond D Vlasin ('51)  
Gary L Wahlgren ('64)  
Elden D Wesely ('51)  
Timothy A Wheeler ('83)  
Brett R White ('86)  
Gary C White ('66)  
Wayne A White ('50)

Steven G Wirth ('01)  
Dale E Wolf ('41)  
Tyler D Wolford ('97)  
Curtis A Wray ('02)  
Clayton Yeutter ('49)

## ILLINOIS

Robert H Angus ('68)  
Barry A Aves ('80)  
Terry J Beebe ('79)  
James B Bennett ('53)  
James A Bilyeu ('66)  
R David Bitting ('81)  
Kenneth R Bolen ('61)  
Richard C Brantner ('73)  
William E Britz ('53)  
Allyn E Buhrow ('96)  
Ralph W Burnett ('46)  
Donald L Carlson ('87)  
Robert R Caughey ('59)  
Darren R Cole ('89)  
Christopher A Cotter ('78)  
Paul E Curtis ('53)  
Richard B Curtiss ('58)  
Robert G Curtiss ('50)  
James O Day ('53)  
Jon W Demoss ('66)  
John E Deuth ('73)  
James D Dougherty ('76)  
Thomas E Durbin ('86)  
Lucas M Ebbing ('00)  
James D Elmer ('54)  
Michael R Fayhee ('67)  
Fred C Francis ('37) †  
Ryan C Gentle ('98)  
David C Gilmore ('86)  
David A Goodell ('87)  
Kenneth W Gorden ('42)  
Kurt N Gruben ('88)  
Kevin M Haas ('80)  
Darren W Havens ('92)  
Phillip J Heisner ('94)  
Matthew J Helms ('93)  
Marty L Heyen ('88)  
William L Hollis ('89)  
Glenn M Holmes ('50)  
Chris A Hudson ('71)  
Brian K Johnson ('90)  
Laurence F Johnson ('65)  
Byron E Jones ('59)  
Howard E Knapp ('82)  
F Dale Laible ('47)  
William E Lee ('80)  
G Irvin Lipp ('64)  
Chris B Lovekamp ('75)  
Gary L Ludwig ('64)  
Brett E Madison ('81)  
Charles E Martin ('48)  
L Patrick McElvain ('70)  
Eric J McEwen ('91)  
James E McGinnis ('62)  
David W Mies ('67)  
Ronald G Mitchell ('47)  
Roger C Mohrman ('50)  
Donald L Mosher ('39)  
Louis L Myers ('56)  
Jeffery A Nelson ('96)  
David B North ('85)



*"Because of my time spent at the Leadership Institute, I feel like I am a better leader and have been provided with the necessary skills to take back to my chapter so that we can all become better leaders on campus and in the community. Thank you for investing in students like us!"*

- Aron Hutchins (TAM '10)



James V Parochetti ('59)  
Douglas E Punke ('82)  
Kenneth L Quinn ('82)  
David L Rahe ('76)  
Kyle Glen Richardson ('98)  
Randall R Rodgers ('66)  
Roger J Roney ('61)  
A John Scheidenhelm ('50)  
Doug J Schemmer ('90)  
Jerry W Shirley ('65)  
S Dean Sims ('37) †  
Douglas D Sims ('65)  
J Kent Sprague ('55)  
Marvin K Sprague ('78)  
M Andy Sprague ('86)  
Merritt W Sprague ('53)  
Harold B Steele ('41)  
Wilbert N Stevenson ('39)  
David N Stille ('81)  
Timothy D Stock ('96)  
Ryan M Tate ('96)  
Robert R Teel ('49)  
Gerald R Theobald ('64)  
Donald Uchtmann ('66)  
Gary D Uken ('87)  
Francis D Vercler ('47)  
Randall S Vincent ('74)  
Rolf E Vogen ('43)  
Alan S Walter ('64)  
Clarence E Walter ('56)

Warren K Wessels ('62)  
Paul R Wikoff ('98)  
Scott C Williamson ('79)

## KANSAS STATE

Jack Anderson ('62) †  
Marty L Apley ('57)  
Jon Charles W Armstrong ('05)  
Trevor J Attwood ('07)  
Kyle C Bauer ('77)  
John J Bloomfield ('98)  
Kent R Bradley ('85)  
Wallace E Brockhoff ('85)  
Wayne E Brownlee ('59)  
Edward G Buss ('41)  
John W Carlin ('59)  
James H Chilcott ('61)  
Verne E Claussen ('64)  
Melvin L Cotner ('46)  
Monte B Couchman ('86)  
Michael E Dikeman ('63)  
Lawrence A Dimmitt ('61)  
G Lyndis Dohm ('61)  
Donald R Ferguson ('63)  
David H Fleske ('73)  
W Richard Folsche ('56)  
Stephen J Francis ('76)  
Curtis A Frasier ('70)

Continued on next page...



# Honor Roll by Chapter, cont'd

Joe L Frasier ('75)  
 Mark W Frasier ('77)  
 Vail D Fruechtling ('78)  
 Jerry L Gardner ('59)  
 Gregory A Gartrell ('73)  
 Malcolm E Gigstad ('61)  
 Charles W Glenn ('42)  
 Wayne M Grover ('59)  
 Larry G Hadachek ('76)  
 Timothy J Hadachek ('07)  
 Wayne A Hagemoser ('59)  
 Cedric K Hands ('72)  
 Larry C Hixson ('60)  
 Roger P Holste ('71)  
 Keith W Houghton ('69)  
 Jonathan E Ireland ('07)  
 Robert E Ireland ('60)  
 Dwight N Jackson ('57)  
 Justin B Janssen ('67)  
 William L Justice ('60)  
 Gerald L Karr ('57)  
 Charles D Keller ('55)  
 Earl D Kellogg ('60)  
 Janver D Krehbiel ('57)  
 Kim D Krehbiel ('79)  
 Robert L Larson ('80)  
 Gregory R Leet ('77)  
 Robert W Lewis ('58)  
 James L Lindquist ('70)  
 Terry K Manz ('62)  
 David F Martin ('65)  
 Philip V Mathews ('64)  
 Michael P McGinn ('90)  
 Eric C McPeak ('92)  
 James B Meinhardt ('94)  
 Charles D Miksch ('55)  
 Kent L Moore ('85)  
 G Richard Munson ('73)  
 Leon J Patton ('70)  
 Roger C Pine ('58)  
 Dale W Pracht ('92)  
 Francis L Reichart ('54)  
 John B Riley ('79)  
 R Steven Robb ('60)  
 David D Rock ('77)  
 Floyd E Rolf ('42)  
 Clinton P Rusk ('79)  
 Mark K Scanlan ('75)  
 Ray R Schooley ('57)  
 John W Schrader ('63)  
 Lawrence Schrader ('60)  
 Ronald R Schultz ('57)  
 Larry M Seitz ('59)  
 Andrew R Soukup ('87)  
 Lawrence E Stoskopf ('59)  
 Leon A Sucht ('56)  
 Tracy L Thomas ('80)  
 Jason E Topp ('05)  
 Harold J Tuma ('52)  
 Jack R Weaver ('74)  
 Stuart W Weibert ('66)  
 Joel T Weigand ('63)  
 Stephen L Winn ('62)

## IOWA STATE

James A Aasland ('59)  
 Donald L Ahrens ('62)  
 Dave P Anton ('65)  
 Larry J Anton ('61)  
 Walter B Armstrong ('80)  
 Ted I Axlund ('52)  
 Thomas G Barrett ('66)  
 H Maurice Beaver ('40)  
 Timothy C Becker ('90)  
 Daryl Belshan ('02)  
 Rodney D Benson ('80)  
 Lloyd A Bettis ('67)  
 Charles R Binau ('59)  
 Theodore D Bogue ('68)  
 William H Bogue ('65)  
 David E Boswell ('83)  
 Clark H Bowden ('06)  
 Roger Buehler ('64)  
 Marlowe P Burgy ('42)  
 Kenneth D Burkhart ('72)  
 Rickey D Burras ('79)

Ryan T Carey ('94)  
 Martin H Clark ('49) †  
 Roger L Click ('67)  
 Christian L Colburn ('05)  
 C Richard Connell ('49)  
 Derek Crawford ('09)  
 Reid W Crawford ('70)  
 Randall L Crom ('76)  
 Robert L Crom ('47)  
 James W Dane ('70)  
 William H Dubbert ('49)  
 Chris Dummermuth ('76)  
 Shawn G Eagleburger ('02)  
 William M Edwards ('67)  
 Benjamin Ellefson ('07)  
 Jon D Ellis ('84)  
 Kenneth I Fawcett ('68)  
 Andrew Feller ('07)  
 A Corby Fichter ('78)  
 A Corby Fichter ('50)  
 Gabe Flick ('08)  
 Richard E Ford ('54)  
 Clinton R Foss ('01)  
 Jim Frevert ('58)  
 Carlyle Gauger ('37)  
 Darrell D Godfrey ('73)  
 Gordon E Goldsmith ('64)  
 Robert J Grandin ('06)  
 Burton W Hable ('05)  
 Kevin Hancock ('09)  
 David R Hansen ('90)  
 Robert E Hansen ('68)  
 Dixon L Harper ('47)  
 Chad E Harris ('98)  
 L Craig Harris ('65)  
 Duane G Harris ('63)  
 Philip Harris ('70)  
 William E Harris ('65)  
 Andrew P Hart ('77)  
 Arthur W Heggen ('66)  
 Nathan J Heidegger ('88)  
 Lynn O Henderson ('71)  
 Rollie Henkes ('54)  
 Jeffrey R Henningsen ('83)  
 Scott Henry ('09)  
 Joel R Hertz ('57)  
 Larry K Hiller ('59)  
 Harold H Hodson ('59)  
 Maynard G Hogberg ('64)  
 Wesley G House ('62)  
 Wallace E Huffman ('64)  
 James P Hultgren ('65)  
 Merle W Hunt ('42)  
 Theodore Hutchcroft ('51)  
 Donald B Irwin ('65)  
 John W Jensen ('64)  
 Charles R Jorgensen ('55)  
 Cale A Kassel ('05)  
 Kenneth W Kassel ('76)  
 Paul C Kassel ('75)  
 Ronald D Kay ('53)  
 Gary G Kimes ('66)  
 Robert J Kirkpatrick ('39)  
 Gerald E Klonglan ('55)  
 Patrick Kolker ('11)  
 Robert L Kollmorgen ('57)  
 Brent M Kuehnast ('88)  
 Jerry R Ladman ('55)  
 Douglas A Larsen ('81)  
 Kenneth L Larson ('52)  
 R Paul Lasley ('89)  
 Stanley B Laures ('61)  
 Keith A Littlefield ('64)  
 Michael R Loenser ('90)  
 Steven M Lonergan ('85)  
 Donald H Lowenberg ('52)  
 Richard A Lowers ('77)  
 Kent A Lucken ('83)  
 David R Machacek ('62)  
 Benjamin A Malin ('97)  
 Ryan C Marotz ('95)  
 Michael S Marty ('87)  
 Bradley D Matt ('98)  
 Paul A Mattson ('53)  
 Guy M McCaw ('77)  
 Duane C McFadden ('61)

Ryan J McKenna ('96)  
 Jon K McLaughlin ('86)  
 Joey L Meyer ('80)  
 Timothy R Meyer ('79)  
 Steven M Michaud ('83)  
 Brett J Moffitt ('03)  
 Michael E Moffitt ('76)  
 David L Morris ('62)  
 John C Morris ('71)  
 Donald R Myrtue ('60)  
 Benjamin F Nedved ('99)  
 Eric F Nelson ('81)  
 Richard E Nelson ('43)  
 Owen J Newlin ('50)  
 Stephen S Nicholson ('75)  
 Wayne V Northey ('54)  
 Leroy L Odem ('55)  
 Charles Oldham ('56)  
 Gary A Olsen ('76)  
 Jared Olsen ('09)  
 Ronald D Olson ('67)  
 Clifton D Paulsen ('95)  
 Jake B Peterson ('96)  
 Max D Peterson ('62)  
 Roger Peterson ('59)  
 Kevin Peyton ('07)  
 Victor C Pierrot ('61)  
 Charles L Pilmer ('42)  
 Allyn J Plambeck ('64)  
 Frank Postma ('59)  
 Douglas A Pringnitz ('81)  
 Keith H Remy ('52)  
 Tracy V Remy ('54)  
 M Deane Rinner ('47) †  
 David J Rock ('76)  
 Eugene E Rodberg ('85)  
 Martin Roepke ('53)  
 Gary F Roewe ('65)  
 Myers M Rossiter ('49)  
 Jack E Rossmann ('55)  
 Robert D Ruen ('57)  
 Delbert C Scheider ('48)  
 Roy A Schultz ('56)  
 George Selbher ('91)  
 Roger A Selley ('60)  
 Dwight M Shappell ('51)  
 Richard O Shuler ('64)  
 David P Skarshaug ('80)  
 Riley W Smith ('01)  
 Darl E Snyder ('42)  
 Thomas E Speer ('73)  
 Tyson M Stichka ('99)  
 Roger W Strohbehn ('52)  
 Arnold R Swanson ('51)  
 James M Thomsen ('48)  
 Bernard F Tobin ('81)  
 James P Tobin ('76)  
 Terrence Tobin ('76)  
 Merton E Tracy ('42)  
 K Dwayne Vande Krol ('90)  
 Thomas J Vincent ('80)  
 Leo M Walsh ('51)  
 Keith A Weber ('60)  
 Peter J Wenstrand ('70)  
 Gerald C Wheelock ('59)  
 Donald G Wilson ('66)  
 Stephen G Wilson ('64)  
 John E Wise ('53)  
 Brian N Woolley ('75)  
 Frank L Wyatt ('66)  
 Zachary J Young ('02)  
 Donald D Zimmerman ('54)

## OKLAHOMA STATE

Gardner Arteberry ('53)  
 Tarlton H Bailey ('71)  
 William F Bennett ('49)  
 Paul C Bicket ('71)  
 Barry L Bloyd ('64)  
 Phil R Bornemann ('64)  
 John W Bowers ('02)  
 Olin R Branstetter ('48) †  
 Harold E Burkhardt ('63)  
 Darin J Burrell ('90)  
 C Matthew Calavan ('84)  
 Kurt L Campbell ('94)

Steven K Campbell ('82)  
 Glenn A Carlson ('63)  
 Elmo M Castle ('66)  
 L E Castle ('47)  
 R J Cooper ('51)  
 Scott L Cormack ('77)  
 Kenneth R Davis ('83)  
 Ricky J Davis ('80)  
 Steven C Davis ('77)  
 Joshua H Fuller ('00)  
 Glen C Grider ('80)  
 Jared Harrison ('00)  
 Ralph E Harrison ('69)  
 Bryce L Hodgden ('62)  
 Cody B Hodgden ('89)  
 Robert H Hornbaker ('78)  
 Ken A Hudgeons ('71)  
 Donald C Hughes ('59)  
 Stephen B Huseman ('91)  
 Milford H Jenkins ('83)  
 Michael B Johnson ('83)  
 Kevin L Jordan ('74)  
 Joel H Kendall ('91)  
 Stewart M Kennedy ('91)  
 James W Key ('85)  
 John G Kirkpatrick ('59)  
 Kevin E Koerner ('91)  
 Charles W Kolar ('57)  
 William B Kosanke ('96)  
 Jarrett D Kruska ('93)  
 Dennis G LaMunyon ('54)  
 Thomas G Loafmann ('57)  
 Edwin E Long ('53)  
 Sammie P Mackey ('81)  
 Ricky A Marsh ('78)  
 Carson E McDaniel ('96)  
 Lyman L McDonald ('60)  
 Braden T McElroy ('93)  
 Jackie B McGavock ('95)  
 Steven Meyer ('76)  
 Mark O Morris ('92)  
 Ronald T Noyes ('56)  
 Karl Oltmanns ('84)  
 Robin E Osborn ('75)  
 Josh Peck ('96)  
 James Pfeiffer ('76)  
 Raymond L Prewett ('64)  
 Thomas A Puckette ('75)  
 Don W Rader ('43)  
 David W Richardson ('84)  
 James D Root ('91)  
 Rusty Roush ('00)  
 Rusty Rust ('84)  
 Jason P Sauter ('91)  
 Darin L Schmidt ('93)  
 Jerry C Schmidt ('67)  
 John E Schmook ('47)  
 John F Seiber ('61)  
 Robert Seiber ('59)  
 Richard L Shafer ('63)  
 Terry J Shaw ('65)  
 Wallace Smith ('52)  
 Thomas E Stanford ('63)  
 Elton C Talley ('36) †  
 Gregory M Thomas ('69)  
 Jack D Thomas ('71)  
 Eddie L Thomason ('50)  
 Robert Totusek ('46)  
 David G Trojan ('72)  
 Connelly S Wade ('90)  
 Larry S Walker ('76)  
 Robert E Walton ('50)  
 Donald J Wedman ('59)  
 Lyndon W Whitmire ('90)  
 James R Wilson ('56)  
 Steven R Wilson ('81)  
 James E Wolfe ('46)  
 Yancy Wright ('98)

## MINNESOTA

Dana L Allen ('60)  
 Kirk Amundson ('10)  
 Jarvis W Anderson ('55)  
 Alvin A Andrews ('56)  
 John I Ankeny ('48)  
 Lynn Baldus ('09)

## Number of Members Contributing For (FY) 11-12

Iowa State	179
Purdue	125
Missouri	106
Minnesota	102
Nebraska	100
Michigan State	95
Illinois	94
North Dakota State	94
Oklahoma State	90
Kansas State	86
North Carolina State	77
South Dakota State	76
Washington State	50
Colorado State	47
Idaho	31
Arkansas	28
Tennessee	27
Ohio State	21
Auburn	15
Kentucky	11
Wyoming	11
Mississippi State	10
New Mexico State	9
Texas Tech	8
Illinois State	6
Cal St Poly-Pomona	5
Troy University	5
Oregon State	4
Alberta	3
Texas A&M	3
Guelph	2
Nebraska-Curtis	2
Clemson University	1
Montana State	1
Tarleton State	1
Wisconsin-Platteville	1
Georgia	0
Honorary Members	0
Morehead State	0
Cal Poly - SLO	0
Tennessee Tech	0
California - Davis	0
Virginia Tech	0
Wisconsin-Madison	0
Western Kentucky	0
West Virginia	0
Friends of FarmHouse	111
Multiple Gifts	855
<b>Total</b>	<b>2,492</b>

Ebener Ballinger ('97)  
 Homer W Barnett ('40) †  
 Bradley W Bartz ('80)  
 Justin H Bartz ('99)  
 Stephan M Becker ('86)  
 Colin D Berg ('77)  
 Norman G Brakken ('45)  
 Donald L Buhl ('69)  
 Tim Carlson ('77)  
 Trevor Christensen ('09)  
 William L Crawford ('74)  
 Justin Crowley ('09)  
 Luke P Daninger ('08)  
 Kenneth Deutz ('10)  
 Nicholas A Dille ('96)  
 Patrick D Duncanson ('81)  
 Matthew L Edman ('53)

Taylor Engquist ('09)  
 Marvin L Enslin ('65)  
 Michael J Feda ('74)  
 Justin J Feucht ('50)  
 Joseph F Forner ('87)  
 Franklin Foster ('10)  
 Jared Franke ('09)  
 Andrew Gray ('10)  
 Clark W Hanson ('61)  
 Eugene B Hook ('51)  
 Steven G Horning ('79)  
 Kent R Horsager ('81)  
 Loren B Horsager ('89)  
 Dennis W Hovelson ('72)  
 Milton D Jellum ('53)

Continued on next page...





# Honor Roll by Chapter, cont'd

Raymond Johnson ('10)  
 Jason A Kaare ('08)  
 Thomas O Kajer ('58)  
 Dale A Kennen ('60)  
 Wayne C Kennen ('65)  
 James R Klande ('64)  
 Jeffrey Knobloch ('10)  
 Thomas J Kopacek ('70)  
 Donald W Kvasnicka ('51)  
 Dwight Kvasnicka ('76)  
 Steve Lammers ('10)  
 Brian T Larson ('67)  
 Eric J Lee ('86)  
 Jon D Luhman ('89)  
 Roger R Madison ('62)  
 Bryan E Malone ('91)  
 Richard L Meyer ('57)  
 Paul J Meyers ('67)  
 Arvid M Monson ('57)  
 Scott D Neigel ('85)  
 Peter A Neugebauer ('75)  
 Phillip M Ostenso ('60)  
 Daniel R Pearson ('73)  
 Nickolas Penning ('09)  
 Leslie W Peterson ('48)  
 Mathias Peterson ('09)  
 Carl L Pherson ('64)  
 Milton L Pietz ('47)  
 Gyles W Randall ('60)  
 Joel D Reiman ('96)  
 James M Resch ('71)  
 Cory Riewe ('09)  
 Isaac Salfer ('10)  
 Lee D Sandager ('46)  
 Justin L Schiroo ('09)  
 Bradley J Schloesser ('81)  
 Jonathon Schmitt ('10)  
 Marvin C Schrader ('56)  
 Ronald D Seath ('49)  
 David G Settergren ('74)  
 Michael Sheely ('08)  
 Joseph Shekleton ('11)  
 Edward E Sletton ('40)  
 Keven D Smith ('77)  
 Nathan D Smithson ('96)  
 Leighton P Spaulding ('09)  
 Justin Stanton ('11)  
 Eldred E Statz ('69)  
 Ryan Tentis ('08)  
 Eldon A Tessman ('47)  
 Josh D Tjosas ('96)  
 Patrick Troendle ('87)  
 James W Turner ('74)  
 Joseph Uter ('09)  
 Cole Van Beusekom ('10)  
 John P Verly ('07)  
 Robert F Walser ('49)

Tyler Warren ('10)  
 John P Wearda ('83)  
 Roger W Weness ('65)  
 Christopher T Wetzell ('99)  
 Nathan L Winkelman ('78)  
 David J Wright ('73)  
 Richard B Zoller ('48)

## MICHIGAN STATE

Richard P Anderson ('49)  
 Robert J Bachleda ('56)  
 Alan J Bakker ('78)  
 Bruce D Ballard ('81)  
 David J Ballard ('76)  
 James D Ballard ('51)  
 Edward R Barton ('57)  
 James Bentley ('64)  
 Edwin M Blackburn ('49)  
 Robert E Blahnik ('91)  
 William L Bortel ('53)  
 John Bortins ('69)  
 James Bosserd ('02)  
 David M Bowen ('72)  
 David H Boyne ('54)  
 Robert E Braden ('42)  
 Eugene H Buck ('63)  
 William L Carr ('52)  
 Kenneth C Cavanaugh ('37)  
 Kenneth Chace ('66)  
 Chris Creguer ('03)  
 Mark Daniels ('03)  
 David L Dean ('65)  
 Tarry L Edington ('61)  
 Dan L First ('79)  
 Neal S Francisco ('90)  
 Gary J Gascho ('60)  
 Gerald W George ('63)  
 Larry E Goostrey ('76)  
 Elmer R Graber ('52)  
 John R Graf ('63)  
 George G Greenleaf ('46)  
 Herman Grill ('56)  
 Adam Herford ('98)  
 Joseph W Hickey ('78)  
 Robert G Housedorf ('52)  
 David L Howell ('62)  
 Rolf F Illsley ('39)  
 Arlen R Isham ('63)  
 Curtis Jensen ('63)  
 William F Keish ('61)  
 Gary R Kelly ('70)  
 Cernywn K Kline ('43)  
 Paul C Kline ('49)  
 Bryan J Knoper ('87)  
 John Koepfle ('56)  
 Anthony F Korican ('55)

Jay S Koths ('47)  
 Gerald J Kugel ('52)  
 Gerry L Kuhl ('65)  
 David E Larson ('45)  
 George H Lauff ('45)  
 Raymond F Mazur ('45)  
 Ryan McBride ('03)  
 Kip McGilliard ('70)  
 John P Molohon ('68)  
 James L Monroe ('67)  
 Thomas A Monroe ('66)  
 Jack L Morse ('61)  
 Robert Muir ('49)  
 John Norton ('51)  
 Jon Oakes ('97)  
 Howard Pennington ('53)  
 Donald H Pettengill ('58)  
 Steven G Pueppke ('69)  
 George Quackenbush ('03)  
 Eugene L Raab ('52)  
 Jim Reithel ('94)  
 Gerald F Richards ('47)  
 Ben Ritter ('96)  
 Gerald D Robson ('53)  
 Mitchell Roth ('70)  
 Brian J Schulz ('91)  
 Jeff Schulz ('99)  
 Gerald D Schwab ('88)  
 Dale L Shaw ('63)  
 Isaac Sheppard ('54)  
 Darold Simpson ('57)  
 Richard Skillen ('55)  
 Peter W Spike ('60)  
 Philip Spike ('67)  
 John F Stollsteimer ('51)  
 Dale E Stuby ('64)  
 David J Sturgis ('58)  
 Leonard J Tabaka ('62)  
 Darrell J Thompson ('52)  
 Gilbert E Tinsey ('60)  
 Dean S Tribby ('51)  
 Walter M Turner ('64)  
 David P Tutak ('67)  
 David A Van Dyke ('67)  
 Andrew J Watson ('41)  
 Kyle Weidmayer ('95)  
 Robert W Wiles ('63)  
 Walter C Willett ('64)

## COLORADO STATE

Christopher E Arnold ('82)  
 Gregory L Bamford ('67)  
 Ralph E Beadle ('62)  
 John D Caldwell ('64)  
 Thomas Caldwell ('66)  
 Donald C Clanton ('49)

W James Clawson ('54)  
 Dale A Coleman ('74)  
 Louis M Conti ('84)  
 Stanley E Cornforth ('70)  
 Ivan E Dale ('54)  
 Rollie E Deering ('65)  
 Thomas J Doherty ('55)  
 Joseph L Edgar ('63)  
 Jack R Fenwick ('84)  
 Christopher E Frasier ('80)  
 James R Grady ('66)  
 Mike H Harper ('86)  
 Jack G Haselbush ('67)  
 Christian K Hertneky ('80)  
 Dean A Johnson ('59)  
 Dewey Johnson ('49)  
 James D Johnson ('56)  
 Joseph D Kasza ('75)  
 James Kemp ('52)  
 Chris H Lembecke ('67)  
 Robert A Longenbaugh ('54)  
 Gene H Nesbitt ('60)  
 Myron W Off ('85)  
 Robert L Off ('64)  
 George W Orr ('54)  
 John C Ortner ('04)  
 Daniel D Overton ('83)  
 Bradley A Peterson ('77)  
 Timothy P Rafert ('89)  
 Alan R Rice ('56)  
 James C Rupp ('82)  
 Douglas J Schlagel ('91)  
 Floyd Shoemaker ('53)  
 John A Smartt ('55)  
 Marion E Stanley ('52)  
 Charles M Thompson ('63)  
 Donald C Thorn ('92)  
 William S Trampe ('65)  
 Robert W Weldon ('54)  
 Ronald B Wiley ('75)  
 Dale Yonker ('60)

## WYOMING

James N Archer ('91)  
 Richard L Bengtson ('62)  
 Richard T Clark ('59)  
 Barney Cosner ('72)  
 Dennis R Daly ('57)  
 John Dalry ('67)  
 Greg C Jarvis ('73)  
 Ronald Kumor ('79)  
 Ryan McConnaughey ('06)  
 Gene L Schreiber ('51)  
 Vern R Stewart ('50)

## KENTUCKY

Louis J Boyd ('53)  
 Joe B Dixon ('51)  
 Otis Griffin ('62)  
 Michael L Miller ('65)  
 William G Moody ('53)  
 Kenneth W Overhults ('60)  
 Gary Kevin Palmer ('03)  
 Virgil L Quisenberry ('65)  
 Patrick J Robinson ('98)  
 Robert C Ward ('54)  
 Garry L Weston ('97)

## PURDUE

Thomas Atchley ('10)  
 Ralph E Bailey ('69)  
 Mark L Baird ('73)  
 Aaron Barker ('12)  
 Quentin Behrs ('11)  
 Lawrence C Beck ('59)  
 Brenton S Bible ('93)  
 Drew Billman ('11)  
 Tom Blackwell ('10)  
 Jacob Bohlander ('12)  
 John Braden ('11)  
 Colin Brander ('11)  
 Weston Brander ('10)  
 Kenneth Brashaber ('52)  
 John L Brown ('55)  
 James C Bryant ('79)

Brent Budreau ('12)  
 John Carter ('12)  
 Wayne O Carter ('78)  
 Ellsworth P Christmas ('55)  
 Jack M Conrad ('09)  
 Allen H Cummins ('55)  
 Warren J Davis ('58)  
 Neil Dawson ('12)  
 James A Deutsch ('68)  
 C Dean Dobbins ('67)  
 Seth A Edwards ('09)  
 Zach Edwards ('11)  
 Jared Ehlerding ('11)  
 Brock Farrell ('10)  
 Ian Richard Ferch ('09)  
 John E Flesher ('68)  
 Alex J Franke ('81)  
 Brian Q Gauck ('09)  
 Donald E Gordon ('63)  
 Evan F Gordon ('09)  
 Andrew J Gridley ('10)  
 Brandon Gridley ('12)  
 John A Hale ('74)  
 Dylan Haltom ('12)  
 Jonathan A Hawley ('98)  
 Brandon Herbert ('12)  
 Nick Hercheuender ('01)  
 Robert E Holm ('59)  
 Kurt A Hubbell ('09)  
 Evan Huiras ('12)  
 Cale Huston ('12)  
 Travis Jefferson ('11)  
 D Jay Jones ('64)  
 William J Kenworthy ('67)  
 Cody S Kerr ('10)  
 Cory Kettler ('12)  
 Michael D Kirkpatrick ('73)  
 Jesse N Kiste ('09)  
 Rick Koehn ('12)  
 John R Konkle ('74)  
 Justin Lambert ('12)  
 Brandon Lee ('12)  
 Benjamin Leu ('04)  
 Jay E Lockhart ('65)  
 Nick Marks ('11)  
 Dale S Martin ('52)  
 Travis Martin ('11)  
 Steven C Mason ('00)  
 Richard Masters ('12)  
 Allen R Mayo ('60)  
 James M McBee ('80)  
 Bryce McCory ('12)  
 Christopher McIntire ('12)  
 William G McVay ('52)  
 Chase Messersmith ('11)  
 Curtis O Middleton ('52) +  
 Michael Milligan ('12)  
 Cletus R Mitchell ('52)  
 Justin D Moffitt ('10)  
 John Morris ('62)  
 Ryan D Musselman ('09)  
 Isaac Myers ('12)  
 Samuel G Myers ('09)  
 Rene R Neff ('52)  
 Christopher Nobbe ('09)  
 Jason Paarlberg ('12)  
 Don E Pennington ('56)  
 Adam K Peters ('02)  
 Michael Peters ('11)  
 Joshua E Pottschmidt ('10)  
 Tyler Pottschmidt ('12)  
 Joshua Price ('10)  
 Tyler Reese ('11)  
 Robert B Rhoda ('75)  
 Logan Ricke ('12)  
 Billy Robinson ('11)  
 Drew Romesberg ('12)  
 Zachery Romoser ('12)  
 Daniel A Rowland ('76)  
 Casey Ryan ('11)  
 Daniel Ryan ('12)  
 Travis L Scherer ('98)  
 Luke F Schmitler ('10)  
 James E Schwartz ('65)  
 William Schwartz ('67)  
 Curtis Schwering ('12)

Ethan Sell ('11)  
 Hubert J Shackleton ('58)  
 Derrick Shipe ('11)  
 Austin Shroyer ('11)  
 Matthew Silvey ('12)  
 Preston T Sipe ('09)  
 Derek Smallwood ('12)  
 Merrill W Smith ('72)  
 Wayne E Smith ('65)  
 Noel W Stuckman ('54)  
 Nathan M Taulman ('02)  
 Deane L Thompson ('59)  
 George W Thrasher ('52)  
 Hugo VanRoessel ('12)  
 Eric Wagner ('11)  
 Travis Waltrip ('10)  
 Dean R Wheeler ('76)  
 Neil D Wheeler ('85)  
 Maurice L Williamson ('61)  
 Jon Wilson ('12)  
 Richard F Woerner ('66)  
 Ian S Wooten ('09)  
 Vance O York ('52)

## NORTH CAROLINA STATE

William H Adams ('63)  
 Leonard L Allen ('58)  
 Billy N Ayscue ('56)  
 Kenneth R Barker ('54)  
 Guy W Bowers ('00)  
 Sherrill Brinkley ('55)  
 Billy E Caldwell ('54)  
 Edwin W Causey ('70)  
 Marty W Coates ('84)  
 Dale S Cochran ('83)  
 Roger E Collins ('60)  
 Maurice G Cook ('69)  
 P Grant Culp ('04)  
 Emerson B Deese ('55)  
 Damon DiGiorgio ('96)  
 R Brent Dixon ('02)  
 Bernard W Ferguson ('58)  
 Daniel Fowler ('96)  
 Gaylord H French ('57)  
 Kevin L Gantt ('85)  
 Phillip D Goforth ('64)  
 Harley E Gray ('54)  
 David M Greene ('93)  
 William B Hall ('65)  
 Max J Hamrick ('65)  
 Edward M Harris ('71)  
 Byron K Hawkins ('54)  
 Randy B Hefner ('68)  
 Christopher T Hege ('96)  
 Charles M Huskey ('72)  
 William O Johnson ('76)  
 Richard A Jones ('79)  
 Ralph H Ketchie ('69)  
 Durwood Laughinghouse ('68)  
 Scott A Lee ('03)  
 Thomas F Lee ('73)  
 J Wayne Lee ('85)  
 R Daniel Lineberger ('69)  
 James R Mabe ('69)  
 Ronald L Marlow ('68)  
 Thomas E McCall ('59)  
 Charles D McMahon ('58)  
 Birch L McMurray ('54)  
 Grover C McPherson ('54)  
 Donald S Morris ('58)  
 Matthew J Moyer ('94)  
 Jacob J Parker ('70)  
 Eugene B Pickler ('54)  
 William E Plummer ('67)  
 Sidney E Sauls ('66)  
 Rick A Setzer ('65)  
 Henry C Sink ('98)  
 Branch Smith ('00)  
 David W Smith ('79)  
 David A Smith ('56)  
 George E Smith ('74)  
 Carroll J Southards ('54)

## CORPORATE MATCHING GIFTS

*Corporations of all sizes encourage support of charitable causes by offering to match gifts made by their employees to qualifying 501(c)3 organizations, such as the FarmHouse Foundation.*

*Some employers will match retired employees' gifts too.*

*The FarmHouse Foundation thanks the following corporations, which matched employees' gifts to the Foundation during the 2011-12 fiscal year.*

AgriBank, FCB	Kraft Foods
Altria Group, Inc.	Los Arboles Management,
Ball Corporation	LLC
FMC Corporation	Markel Corporation
GE Foundation	Microsoft
General Mills Foundation	National Bureau of Property
Hormel Foods Corporation	Administration, Inc.
Kimberly Clark Foundation	Pfizer Foundation

Continued on next page...



# Honor Roll by Chapter, cont'd

Scott A Southerland ('93)  
Douglas E Spicer ('90)  
William J Spivey ('89)  
James E Steelman ('54)  
Walter T Stinson ('54)  
Kenneth O Summerville ('55)  
Albert Sutton ('59)  
John V Teague ('56)  
Mark A Trexler ('77)  
Jefferson T Twisdale ('89)  
Eddie H Watkins ('71)  
Talmadge J Wiggins ('54)  
Charlie Wilkinson ('00)  
Howard L Williams ('65)  
J Scott Woempner ('78)  
Stephen C Woodruff ('80)  
Dennis T Worley ('76)  
Ricky L Young ('67)  
Charles R Younts ('56)  
S Eugene Younts ('54)

## ARKANSAS

Christopher Addison ('09)  
Nikolas Birchfield ('10)  
Hardy Cloutier ('54)  
Tyler Copeland ('11)  
Dax DeShazo ('10)  
Dustin Dixon ('11)  
Matthew P Finney ('10)  
Laman Fountain ('11)  
Weston Gant ('10)  
Cody Griffin ('11)  
Andrew Haggard ('11)  
Louis Hamilton ('09)  
Andrew Hawthorne ('11)  
Benjamin Lopez ('11)  
Justin McCormick ('11)  
Adam M Mead ('10)  
Gary Osborne ('10)  
Tom Peck ('11)  
Kevin S Rorex ('10)  
James Rose ('11)  
Daniel Schuldt ('10)  
Hunter G Smith ('10)  
Wesley Smith ('10)  
Sam Teague ('09)  
Brett White ('11)  
Paul F Whittington ('54)  
Joseph R Wiginton ('09)  
Logan Wilmoth ('10)

## NORTH DAKOTA STATE

Kevin A Bachmeier ('82)  
Patrick H Backman ('83)  
Timothy G Backman ('80)  
James B Berg ('76)  
Rick A Berg ('78)  
Eric E Bollingberg ('85)  
Karl A Bollingberg ('82)  
Rolf A Bollingberg ('85)  
Andrew Bromley ('05)  
David A Calderwood ('75)  
David M Carlson ('78)  
Scott A Carlson ('84)  
Douglas A Davidson ('97)  
Duane DeKrey ('75)  
Frank Dooley ('92)  
Charles H Erickson ('61)  
Noel Sean Erovick ('99)  
Justin R Fraase ('05)  
Ron K Fraase ('75)  
Alex M Friedt ('86)  
Justin J Goettle ('02)  
Daniel S Gorseth ('82)  
Norman Gullingsrud ('69)  
Gary D Haberstroh ('87)  
Kurt A Hansen ('89)  
Bryan K Hanson ('78)  
Jason L Hanson ('88)  
Rollin D Herman ('74)  
Wendell D Herman ('67)  
Douglas R Hill ('73)  
Adam M Hoffert ('07)  
Nathan J Huso ('77)  
Michael J Janke ('80)

Jerred A Jirava ('98)  
Mark A Jirik ('95)  
Donald G Johnson ('55)  
Lloyd G Knight ('58)  
Gary R Krieger ('72)  
Eric H Lahlum ('89)  
Gregory P Lardy ('88)  
Curtis C Lawrence ('62)  
Bradley P Lebrun ('99)  
Randolph D Lemm ('76)  
Jerry Little ('63)  
James A Lodoen ('79)  
Richard A Luckow ('68)  
James C MacDonald ('96)  
Thomas R Magill ('85)  
Kenneth Markegard ('68)  
William Martinson ('70)  
Prakash Mathew ('95)  
Christopher J McDonald ('96)  
Thomas R McDougall ('84)  
Jonathan C Melvin ('98)  
Randal E Melvin ('95)  
Charles K Morse ('84)  
Randy A Nesset ('03)  
William M Ongstad ('70)  
Alan K Ormiston ('55)  
Gary W Paulson ('64)  
Wallace D Payne ('55)  
James S Peterson ('86)  
David G Ripplinger ('98)  
Louis J Rosenau ('68)  
Robin J Sahr ('81)  
Bruce E Schmidt ('78)  
Sheldon G Schmiess ('83)  
Duane H Schurman ('69)  
Michael J Schwalbe ('90)  
J Curwood Seefeldt ('71)  
Dale L Siebert ('69)  
Kenneth E Silha ('66)  
Loren E Staroba ('72)  
Michael W Steinke ('91)  
Tyler J Stover ('91)  
Bruce Swanson ('70)  
John E Swanson ('67)  
Derek J Swenson ('96)  
Lee N Tollefsrud ('95)  
Leland J Tong ('89)  
Jeffrey O Topp ('79)  
Lee Trautman ('08)  
Michael C Trautman ('07)  
Daniel G Tuhy ('71)  
Earl T Tveit ('59)  
David H Twist ('66)  
Ryan D Ulstad ('79)  
Vincent L Ulstad ('78)  
Kent M Vesterso ('67)  
Michael J Voxland ('89)  
Jacob L Wallgren ('96)  
Charles Y Weiser ('60)  
Darrin L Wentz ('86)  
Jeffrey G Whelan ('78)

## WASHINGTON STATE

Byron G Adams ('09)  
Alex E Agnew ('11)  
Trent B Amonett ('87)  
Kyle J Bangs ('10)  
Danny Bartelheimer ('62)  
Jared M Beck ('08)  
Taylor S Bonzer ('08)  
Gary M Bryan ('56)  
Thomas N Burdick ('11)  
Leonel Castellano ('12)  
Berl Colley ('61)  
Fred D Corwin ('55)  
Cody J Dean ('12)  
Matthew P Doumit ('08)  
Matthew R Ellis ('02)  
Wayne A Engstrom ('60)  
Eric R Francavilla ('11)  
Lawrence W Goh ('11)  
Scott A Hackett ('88)  
Matthew L Honcoop ('09)  
Douglas L Hummer ('12)  
Richard A Hunter ('62)

Thomas M Keck ('76)  
Wyatt M Koller ('11)  
Nicholas A Krusivnyk ('11)  
Alexander G Kubik ('09)  
Andrew S Lim ('11)  
Dean Lynch ('71)  
Brian D McKay ('06)  
Jonathan L P Meier ('11)  
Kevin R Nebekir ('12)  
Ryan M Nottingham ('98)  
Benjamin V O'Brine ('08)  
James A Rose ('10)  
Mark W Rose ('09)  
Edward R Schneider ('74)  
Norman R Scott ('56)  
Sasa M Sevaetasi ('11)  
Christopher J Shell ('11)  
Lloyd A Slusser ('61)  
Blaze N Smith ('11)  
Wayne D Steffen ('73)  
Kevin L Stenberg ('11)  
Travis M Stone ('11)  
Richard K Strausz ('63)  
Randy A Tisch ('98)  
Stephen G A Trone ('11)  
Daniel J Trudeau ('11)  
Justin N Turner ('11)  
Alan K Walkley ('76)

## IDAHO

Alvin H Burgemeister ('63)  
David A Crea ('71)  
David A Daniel ('73)  
Craig L Daw ('82)  
Liam Donohoe ('12)  
Philip O Edwards ('57)  
William G Eisinger ('72)  
John R Ferebauer ('67)  
Steven L Fields ('65)  
Jeremy Lee Grose ('96)  
Kenneth E Harrison ('57)  
Erik C Haugerud ('91)  
Douglas Hodge ('61)  
Jeff Hood ('87)  
Maurice E Johnson ('57)  
Robert Jones ('57)  
Charles Kelsey ('12)  
Michael P Lane ('89)  
Ronald J Lauer ('70)  
Lawrence E Lloyd ('79)  
Richard J Naskali ('70)  
Jeffrey D Neumeyer ('82)  
V Mallikarjuna Rao ('64)  
Ken L Riddle ('81)  
John E Rockwell ('70)  
Blaine S Sellman ('97)  
Todd W Sims ('89)  
Richard C Stroh ('73)  
Kirk W Walters ('75)  
Richard L Wittman ('68)

## TENNESSEE

Adam Boucher ('12)  
Jackson Butler ('12)  
Mason Butler ('12)  
Michael T Calfee ('67)  
L Myles Carpenter ('59)  
Jack P Crabtree ('61)  
Jason Crawford ('12)  
Caleb Davis ('11)  
William D Giovan ('59)  
James L Herbert ('61)  
Dewayne Holmes ('12)  
Benjamin J Hoptruff ('08)  
Eric D Hyatt ('01)  
Jacob Lampley ('12)  
Grady S McMurtry ('67)  
Kevin Murphy ('11)  
Ben Pate ('12)  
Jason Petty ('11)  
Lawrence A Ramsey ('61)  
Michael Ratliff ('12)  
Bill J Reed ('73)  
Zach Sexton ('12)  
Tyler Smith ('12)

Brandon Thrown ('11)  
Thomas Vondron ('12)  
Cameron Wainwright ('12)  
Gene Withrow ('61)

## MISSISSIPPI STATE

Harold S Aycock ('65)  
Johnathan T Cavin ('98)  
Clayton L Green ('01)  
John P Jenkins ('90)  
A Ross Loftin ('81)  
Erik S Manning ('70)  
Brian M McCann ('95)  
Kenneth A McNeal ('90)  
Aaron Morrison ('11)  
James B Shirley ('88)

## OREGON STATE

John R Crosiar ('68)  
Glenn Klein ('79)  
Christopher W Bradberry ('81)  
Robert D Fain ('88)  
Brock H Goodwin ('98)  
Robert C Keen ('71)  
Brian R R Tisch ('98)

## SOUTH DAKOTA STATE

Kevin J Albrecht ('88)  
Austin Asche ('10)  
Brant Beckman ('10)  
Dinus Briggs ('66)  
Jarrod Bumsted ('08)  
Nate Cockburn ('10)  
Kenneth L Converse ('81)  
Robert Davis ('00)  
Stephen Davis ('10)  
Craig Dybedahl ('78)  
Matt Dybedahl ('08)  
Gaylon Dykstra ('78)  
Jason Elasky ('12)  
Ryan Feist ('00)  
John Goossens ('10)  
Brian Gottlob ('08)  
Derek Gulbrandson ('09)  
Alan Haarstad ('08)  
Gary L Hansen ('72)  
Ricky J Helget ('88)  
Jordan R Helms ('11)  
Eric Holmquist ('94)  
Ross Hudson ('97)  
Dann E Husmann ('98)  
Dave Ireland ('05)  
Tim Janke ('08)  
Terry H Jaspers ('74)  
Ethan Johnson ('12)  
Josh Johnson ('08)  
Chris Josko ('09)  
Patrick Kalmes ('96)  
Elliot Kinnander ('09)  
Brett Kleinschmit ('08)  
Gary Lemme ('87)  
Mike Liepold ('82)  
Jason Madison ('10)  
Thomas J Madson ('84)  
Patrick McAllister ('79)  
Charlie McCone ('96)  
David M Mensing ('01)  
Bradley L Milbrath ('86)  
Jackson R Moeller ('00)  
Dan Moore ('93)  
Jeffrey P Muchow ('66)  
Gary L Myers ('71)  
Chris A Nelson ('83)  
Jeremy A Noem ('10)  
Scott O'Connell ('10)  
Ryan Ode ('11)  
Jeffrey T Olson ('83)  
Bruce C Paterson ('79)  
Joel W Rausch ('91)  
Kevin J Rehder ('03)  
Jeff Robbins ('78)  
Lyle D Rorvik ('72)  
Michael Ruba ('12)  
Jared Sanborn ('10)  
Mark Sandager ('08)  
Peter Sandager ('09)  
Garret Schrock ('09)  
Travis Sprout ('09)

Justin Stane ('11)  
Nathan M Stewart ('01)  
Matthew Stiernagle ('11)  
Richard Stoebner ('75)  
Skyler Thiel ('10)  
Darell E Tilberg ('67)  
Roger E Tilberg ('66)  
Dwight A Tober ('70)  
Richard G Vasgaard ('71)  
Tyler Webb ('11)  
Bruce E Weber ('85)  
Craig H Weber ('86)  
Andrew Wiering ('06)  
Philip M Wirth ('86)  
Jeremy Wolbrink ('09)

## AUBURN

Fredrick L Blackmar ('74)  
Edward H Blankenship ('84)  
Christopher W Bradberry ('81)  
Robert D Fain ('88)  
Brock H Goodwin ('98)  
Robert C Keen ('71)  
James A Kelly ('81)  
Clark A Leeth ('90)  
Jeff A McDowell ('76)  
Russell L Roberson ('78)  
Hugo Rogers ('71)  
Ronny C Russell ('89)  
Allen J Smith ('86)  
Ching-Wei D Tzeng ('96)  
Andrew M Wendland ('85)

## ALBERTA

Lucas Bell ('09)  
Andrew Kittle ('98)  
Callum L Sears ('03)

## TEXAS TECH

Rick D Barnes ('82)  
Elmer M Beard ('77)  
John Z Labrier ('82)  
Jeffrey M Norris ('89)  
John D Slay ('85)  
Kendon S Wheeler ('78)  
Richard Wilborn ('12)  
Mark S Winburn ('87)

## MONTANA STATE

James O'Connell ('91)

## CAL-POLY POMONA

Paul Roamer ('88)  
Daniel J Sehnert ('82)  
Bren Seki ('82)  
Dan Stark ('82)  
Gustaf Stinstrom ('82)

## ILLINOIS STATE

Steven D Drendel ('83)  
Joseph O Jannazzo ('96)  
Thomas M Maier ('98)  
Steven P Robisky ('83)  
Michael F Siefert ('01)  
Craig D Swallow ('84)

## NEBRASKA-CURTIS

Brian Doernemann ('85)  
David A Fiske ('85)

## NEW MEXICO STATE

Robert P Anderson ('87)  
Kirby R Chacon ('95)  
Cameron K Dunlap ('93)  
James A Erramouspe ('90)  
Kris Kelly ('02)  
Karl Libby ('87)  
Daniel Muth ('93)  
Jeremy Settles ('94)  
James S Sullivan ('03)

## WI-PLATTEVILLE

Maxwell Anderson ('07)

## CLEMSON

Patrick M McElderry ('95)

## TROY

J Nick Abraham ('01)  
Marty Emerson ('10)  
Cody Farrill ('11)  
Adam R Harden ('05)  
Elliot S Wehner ('04)

## TEXAS A&M

Clay Erwin ('02)  
Travis Haschke ('11)  
Brian Hogue ('05)

## GUELPH

Blair Cressman ('04)  
John Las ('04)

## OHIO STATE

Robert L Baumann ('63)  
Elmer M Beard ('77)  
Brent Clinehens ('83)  
D Howard Doster ('55)  
John A Epperly ('02)  
Anthonio C Fiore ('98)  
John Ch Foltz ('55)  
John C Foltz ('79)  
Larry Hageman ('78)  
Jeremy D Krone ('00)  
James E Leonard ('60)  
Jordan A Miller ('07)  
Patrick J Nolan ('04)  
Clark A Siddle ('09)  
David A Stacklin ('99)  
Steven G Stacklin ('00)  
Jay Strayer ('56)  
Doug Tenney ('74)  
John J Torres ('02)  
Lionel O Wells ('58)  
Terry Zenser ('67)

## TARLETON STATE

Jacob Seldine ('10)



High ropes course at To Be & Become



# Leadership Institute

The 2012 FarmHouse Fraternity Leadership Institute was made possible by the generous support of the following alumni, Associations and Foundation Councils through The FarmHouse Foundation.



## **"FULL-RIDE" SPONSORSHIPS**

For all undergraduate chapter presidents  
**Roy (IA '55) and Bobbi Reiman**  
Through the Reiman Leadership Fund

**Bob (IL '51) and Lorna Keefer**  
Through the Keefer Leadership Funds

## **"FULL-RIDE" SPONSORSHIPS (\$250 - \$1,500 donors)**

For Chapter Vice Presidents of  
Recruitment, Directors of Finance and  
Directors of New Member Education

**Brent Bible (PU '93), Alberta Association**  
for the Alberta Chapter

**Arkansas Association, Oklahoma State  
Association**  
for the Arkansas Chapter

**Auburn Association**  
for the Auburn Chapter

**Christopher Arnold (CO '82), George Orr  
(CO '54), William Trampe (CO '65),  
Jack (CO '67) & Shirley Haselbush Fund**  
for the Colorado State Chapter and  
chapters not otherwise sponsored

??????  
for the Guelph Chapter

**Steven Fields (ID '65), Jeff Hood (ID '87),  
Idaho Foundation Council**  
for the Idaho Chapter and  
chapters not otherwise sponsored

**David Gilmore (IL '86), Randy Rodgers  
(IL '66), the Elmer Olson (IL '42) Fund**  
for the Illinois Chapter and  
chapters not otherwise sponsored

**Darrell Godfrey (IA '73), Michael Siefert  
(ILS '01), Illinois State Association**  
for the Illinois State Chapter

**Lloyd Bettis (IA '67), Roger Click (IA '67),  
Jon Ellis (IA '84), Bradley Matt (IA '98), the  
Bob Dahlberg (IA '48) and Bob Skinner  
(IA '47) Memorial Fund and the Robert L.  
Crom (IA '47) Leadership Fund**  
for the Iowa State Chapter and  
chapters not otherwise sponsored

**Jack Anderson (KS '62), Ray Schooley  
(KS '57), John Schrader (KS '63), Stuart  
Weibert (KS '66), Kansas State Association  
& Foundation Council**  
for the Kansas State Chapter and  
chapters not otherwise sponsored

**Kentucky Association, Kentucky FarmHouse  
Foundation**  
for the Kentucky Chapter

**Isaac Sheppard (MI '54), Michigan State  
Association**  
for the Michigan State Chapter

**Gyles Randall (MN '60), the Ben Stangler  
(MN '38) Leadership Fund and the Eldon  
(MN '47) & June Tessman Leadership Fund**  
for the Minnesota Chapter and  
chapters not otherwise sponsored

**Harold Aycock (MS '65), Myles  
Carpenter (TN '59)**  
for the Mississippi State Chapter

**Missouri Association and Missouri  
FH Foundation**  
for the Missouri Chapter

**Larry Baker (NE '89), Steve Grasz (NE '81),  
Eric Maaske (NE '93), Ray Vlasin (NE '51),  
the Messersmith Family Fund**  
for the Nebraska Chapter and  
chapters not otherwise sponsored

??????  
for the North Carolina State Chapter

**North Dakota State Association, the  
Calvin G Messersmith (NE '61) Fund**  
for the North Dakota State Chapter and  
chapters not otherwise sponsored

Continued on next page...



*"Thank you for making FLI possible. We learned so much by attending and will implement this knowledge to further our chapter. Your support shows that FarmHouse isn't just for four years, but for life!"*

**- Men of Idaho Chapter**

**Howard Doster (OH '55), Ohio State Association**

for the Ohio State Chapter and chapters not otherwise sponsored

**Oklahoma State Association**  
for the Oklahoma State Chapter

**Noel Stuckman (PU '54), the Dean Dobbins (PU '67) Leadership Fund, the Thomas Ewbank (PU '52) Leadership Fund**  
for the Purdue Chapter and chapters not otherwise sponsored

**Clark Hanson (MN '61), South Dakota State Foundation Council in memory of Dustin Volz (SD '03)**  
for the South Dakota State Chapter (partial sponsorship)

**Iowa State Association**  
for the Southern Illinois Colony (one officer sponsorship)

**Matt Calavan (OK '84)**  
for the Tarleton State Colony

**Jack Crabtree (TN '61), John Riley (KS '79), Tennessee Association**  
for the Tennessee Chapter

**Jonathan Hawley (PU '98), Dale Pracht (KS '92)**  
for the Texas A&M Chapter (one officer sponsorship)

**William Bennett (OK '49), Heath Cheek (TT '00) in memory of Cliff Beights (TT '03), John Slay (TT '85), Dale Shaw (MI '63), Texas Tech Association**  
for the Texas Tech Chapter

??????  
for the Troy Chapter

??????  
for the Virginia Tech Chapter

**Wayne Engstrom (WA '60) and the Gary Schneidmiller (WA '68) Fund**  
for the Washington State Chapter and chapters not otherwise sponsored

**Western Kentucky Association, Western Kentucky FH Foundation, The Kenneth Overhults (KY '60) Leadership Fund**  
for the Western Kentucky Chapter

**Bob (IL '51) and Lorna Keefer Leadership Fund II**  
for the Wisconsin-Platteville Chapter (partial sponsorship)

**Richard T Clark (WY '59), John Ortner (CO '04)**  
for the Wyoming Chapter (one officer sponsorship)

**Patrick McElderry (CL '95)**  
for a chapter officer not otherwise sponsored

**George Orr (CO '54)**  
for a chapter officer not otherwise sponsored

**Jeff Topp (ND '79)**  
for a chapter not otherwise sponsored

**Frasier Family Leadership Fund**  
for a chapter officer not otherwise sponsored

**Tobin Family Leadership Fund**  
for a chapter officer not otherwise sponsored

## OTHER GENEROUS CONTRIBUTORS (\$1 to \$249)

Maxwell Anderson (WIP '07)  
John I Ankeny (MN '48)  
Trevor Attwood (KS '07)  
James B Bennett (IL '53)  
Edwin M Blackburn (MI '49)  
Steven C Borgelt (MO '76)  
Phil R Bornemann (OK '64)  
Kenneth Brashaber (PU '52)  
Dinus Briggs (SD '66)  
Mark Broughton (MO '91)  
Keith M Byergo (MO '48)  
John Caldwell (CO '64)  
John W Carlin (KS '59)  
Donald L Carlson (IL '87)  
Timothy T Carlson (MN '93)  
James H Chilcott (KS '61)  
Brent Clinehens (OH '83)  
Hardy Cloutier (AR '54)  
Darren R Cole (IL '89)  
Barney Cosner (WY '72)  
Paul E Curtis (IL '53)  
Mark Daniels (MI '03)  
Jon W Demoss (IL '66)  
Jack A DeWulf (NE '47)  
Michael E Dikeman (KS '63)  
Steven D Drendel (ILS '83)  
Joseph L Edgar (CO '63)  
Jack R Fenwick (CO '84)  
A Corby Fichter (IA '78)  
Ron K Fraase (ND '75)

Stephen Francis (KS '76)  
Curtis A Frasier (KS '70)  
Brian Q Gauck (PU '81)  
James R Grady (CO '66)  
Scott A Hackett (WA '88)  
Larry Hageman (OH '78)  
Erik C Haugerud (ID '91)  
Jeffrey Heinrich (NE '02)  
Matthew Helms (IL '93)  
Wendell D Herman (ND '67)  
Christian K Hertneky (CO '80)  
Joel R Hertz (IA '57)  
Donald Heuermann (NE '56)  
Douglas R Hill (ND '73)  
Harold H Hodson (IA '59)  
Eric Holmquist (SD '94)  
Keith W Houghton (KS '69)  
Merle W Hunt (IA '42)  
Michael J Janke (ND '80)  
Joseph Jannazzo (ILS '96)  
Thomas Kajer (MN '58)  
Nicholas W Kauffman (NE '03)  
James Kemp (CO '52)  
Michael Kirkpatrick (PU '73)  
Robert J Kirkpatrick (IA '39)  
Ralph J Knobel (NE '52)  
Charles W Kolar (OK '57)  
Bob L Larson (KS '80)  
John Las (GU '04)  
Chris Lembcke (CO '67)  
Robert Longenbaugh (CO '54)  
Thomas M Maier (ILS '98)

Bryan E Malone (MN '91)  
Robert E Manning (MS '70)  
William Martinson (ND '70)  
Loys L Mather (NE '59)  
James Meinhardt (KS '94)  
Timothy R Meyer (IA '79)  
Brett Moffitt (IA '03)  
J Chuck Morris (IA '71)  
Brett M Morrison (NE '88)  
Richard E Nelson (IA '43)  
Jon Oakes (MI '97)  
Leroy L Odem (IA '55)  
Charles Oldham (IA '56)  
James V Parochetti (IL '59)  
Daniel R Pearson (MN '73)  
Shawn Pebley (NE '94)  
Don E Pennington (PU '56)  
Adam K Peters (PU '02)  
Kevin J Rehder (SD '03)  
Robert Rhoda (PU '75)  
Paul Roamer (CP '88)  
Jeffrey Robbins (SD '78)  
Patrick J Robinson (KS '98)  
Daniel Roh (NE '75)  
Louis J Rosenau (ND '68)  
Travis Lee Scherer (PU '98)  
Roy A Schultz (IA '56)  
Eugene R Scott (NE '53)  
Callum Sears (AB '03)  
Ronald D Seath (MN '49)  
Terry J Shaw (OK '56)  
Roger P Sindt (NE '62)

David Skarshaug (IA '80)  
Richard Skillen (MI '55)  
Lloyd Slusser (WA '61)  
Peter Spike (MI '60)  
Loren Staroba (ND '72)  
Joseph G Stevens (MO '93)  
Ray A Stevens (NE '60)  
Tyson M Stichka (IA '99)  
Jay Strayer (OH '56)  
Brian Tisch (WA '98)  
Merton E Tracy (IA '42)  
James E Turner (NE '54)  
David Tzeng (AU '96)  
Warren K Wessels (IL '62)  
Garry Weston (KY '97)  
Mark Winburn (TT '87)  
Nathan L Winkelman (MN '78)  
Vance O York (PU '52)

Annette Coorts Flanders  
in memory of Gerald Coorts (MO '51)

Gwen Dahlberg  
in memory of Bob Dahlberg (IA '47)

Janet Meyer  
in memory of Rex Meyer (NE '51)

Esther Hockett & Bob Mahoney  
in honor of the NDSU Chapter



# Annual Fund

The Annual Fund recognizes alumni and friends of the Fraternity who provide annual unrestricted gifts to the FarmHouse Foundation, thus fueling much of the service and progress of both the Fraternity and the Foundation.

As a 501(c)3 charitable entity, the Foundation is in the business of raising and investing money, then distributing it so as to do the most good for as many undergraduate brothers as possible. New programs often begin with the support of unrestricted money.

Unrestricted giving is essential to the Foundation's operation and programs. In order to honor and recognize donors who make unrestricted gifts, the Foundation Board of Trustees has established the Annual Fund program. (*† denotes deceased*)

## THE SECOND 7

(\$7,000 or more)

C Matthew Calavan (OK '84)  
Steven C Davis (OK '77)  
Wayne A Engstrom (WA '60)  
Donald R Ferguson (KS '63)  
Allen L Frederick (NE '63)  
Jerry L Gardner (KS '59)  
James L Herbert (TN '61)  
Richard D Kruse (KS '63)  
Jeffrey P Muchow (SD '66)  
Robin E Osborn (OK '75)

Michael R Fayhee (IL '67)  
Kent R Horsager (MN '81)  
Gary L Ludwig (IL '64)  
Brett M Morrison (NE '88)  
Owen J Newlin (IA '50)  
Russell L Roberson (AU '78)  
John D Slay (TT '85)  
Charles W Stuber (NE '49)  
Lee T Thurber (NE '91)  
James P Tobin (IA '76)  
Jeffrey O Topp (ND '79)

Edward D Discoe (NE '85)  
Joseph F Former (MN '87)  
Christopher E Frasier (CO '80)  
H Edward Gates (NE '58)  
Darrell D Godfrey (IA '73)  
James D Griffith (MO '91)  
Dale D Grosvenor (NE '43)  
Gary L Hansen (SD '72)  
Arthur W Heggen (IA '66)  
Gregory A Ibach (NE '81)  
Milton D Jellum (MN '53)  
Dewey Johnson (CO '49)  
James A Kelly (AU '81)  
Jay S Koths (MI '47)  
Chris H Lembcke (CO '67)  
Eric D Maaske (NE '93)  
Cal G Messersmith (NE '61)  
Steven M Michaud (IA '83)  
Eric F Nelson (IA '81)  
William M Ongstad (ND '70)  
Gary Kevin Palmer (KY '03)  
James V Parochetti (IL '59)  
Lawrence A Ramsey (TN '61)  
Ronny C Russell (AU '89)  
Delbert C Scheider (IA '48)  
Lawrence Schrader (KS '60)  
Vern R Stewart (WY '50)  
Richard K Strausz (WA '63)  
James E Turner (NE '54)  
Donald G Wilson (IA '66)

## THE CIRCLE OF 7

(\$700 to \$1,904)

Rick A Berg (ND '78)  
Fredrick A Bliss (NE '57)  
Martin H Clark (IA '49) †  
Randall L Crom (IA '76)

## CHAIRMAN'S CLUB

(\$1,905 to \$6,999)

Gregory L Bamford (CO '67)  
Lawrence C Beck (PU '59)  
Ryan D Downs (NE '88)

Scott D Nagel (MN '85)  
Gene H Nesbitt (CO '60)  
H Robert Penner (NE '86)  
Rodny L Penner (NE '84)  
Eric K Poppe (NE '88)  
Kenneth E Pruitt (MO '51)  
David D Rock (KS '77)  
Jim Russell (MO '59)  
Douglas D Sims (IL '65)  
John F Stollsteimer (MI '51)  
Noel W Stuckman (PU '54)  
Fred Swirbul (OR '79)  
Harold J Tuma (KS '52)  
Richard L Wittman (ID '68)

## CHARTER CIRCLE

(\$440 to \$699)

Richard P Anderson (MI '49)  
Brenton S Bible (PU '93)  
Ellsworth P Christmas (PU '55)  
W Richard Folsche (KS '56)  
William D Givan (TN '59)  
Charles W Glenn (KS '42)  
Brock H Goodwin (AU '98)  
Kenneth W Gorden (IL '42)  
Chad E Harris (IA '98)  
Jack G Haselbush (CO '67)  
Craig W Hertel (NE '75)  
Brian Hogue (TAM '05)  
Ronald D Kay (IA '53)  
Robert C Keen (AU '71)  
John R Konkle (PU '74)  
Jason J Lipsey (MO '88)  
Eric D Maaske (NE '93)  
Cal G Messersmith (NE '61)  
Steven M Michaud (IA '83)  
Eric F Nelson (IA '81)  
William M Ongstad (ND '70)  
Gary Kevin Palmer (KY '03)  
James V Parochetti (IL '59)  
Lawrence A Ramsey (TN '61)  
Ronny C Russell (AU '89)  
Delbert C Scheider (IA '48)  
Lawrence Schrader (KS '60)  
Vern R Stewart (WY '50)  
Richard K Strausz (WA '63)  
James E Turner (NE '54)  
Donald G Wilson (IA '66)

John L Brown (PU '55)  
Wayne E Brownlee (KS '59)  
Gary M Bryan (WA '56)  
James C Bryant (PU '79)  
Donald L Buhl (MN '69)  
Alvin H Burgemeister (ID '63)  
Marlowe P Burgy (IA '42)  
Edward G Buss (KS '41)  
David A Calderwood (ND '75)  
Thomas Caldwell (CO '66)  
Michael T Calfee (TN '67)  
Ryan T Carey (IA '94)  
Glenn A Carlson (OK '63)  
Donald C Clanton (CO '49)  
W James Clawson (CO '54)  
Glenn A Claybaugh (NE '48)  
Christian L Colburn (IA '05)  
Dale A Coleman (CO '74)  
C Richard Connell (IA '49)  
Maurice G Cook (NC '69)  
Fred D Corwin (WA '55)  
Barney Cosner (WY '72)  
Melvin L Cotner (KS '46)  
Christopher A Cotter (IL '78)  
Jerry S Cox (MO '60)  
Jack P Crabtree (TN '61)  
William L Crawford (MN '74)  
David A Crea (ID '71)  
Robert L Crom (IA '47)  
John R Crosiar (OR '68)  
Allen H Cummins (PU '55)  
Ivan E Dale (CO '54)  
Dennis R Daly (WY '57)  
James W Dane (IA '70)  
Michael C Dannehl (NE '78)  
Warren J Davis (PU '58)  
James O Day (IL '53)  
David L Dean (MI '65)  
John E Deuth (IL '47)  
Michael E Dikeman (KS '63)  
Nicholas A Dille (MN '96)  
Joe B Dixon (KY '51)  
Brian Doernemann (NEC '85)  
G Lynis Dohm (KS '61)  
William H Dubbert (IA '49)  
Gaylon Dykstra (SD '78)  
Shawn G Eagleburger (IA '02)  
Alex M Eckert (MO '90)  
Tarry L Edington (MI '61)  
Philip O Edwards (ID '57)  
William M Edwards (IA '67)  
James D Elmer (IL '54)  
Marvin L Enslin (MN '65)  
Donald J Epp (NE '58)  
Kenneth I Fawcett (IA '68)  
Justin J Feucht (MN '50)  
A Corby Fichter (IA '78)  
A Corby Fichter (IA '50)  
David A Fiske (NEC '85)  
Justin Reed Fraase (ND '05)  
Neal S Francisco (MI '90)  
Jim Frevert (IA '58)  
Ray A Gard (NE '50)  
Gregory A Gartrell (KS '73)  
Justin James Goettle (ND '02)  
Larry E Goostrey (MI '76)  
Donald E Gordon (PU '63)  
Robert E Graves (MO '68)  
Harley E Gray (NC '54)  
Clayton L Green (MS '01)  
Wayne M Grover (KS '59)  
Max J Hamrick (NC '65)  
J Stanley Hargleroad (NE '55)  
Dixon L Harper (IA '47)  
Mike H Harper (CO '86)  
Philip Harris (IA '70)  
Kenneth E Harrison (ID '57)  
Gregory E Hegemann (NE '92)  
Lynn O Henderson (IA '71)  
Christian K Hertneky (CO '80)  
Joel R Hertz (IA '57)  
Donald L Heuermann (NE '56)  
Maynard G Hogberg (IA '64)

Donald Hollingsworth (MO '45)  
William L Hollis (IL '89)  
Robert E Holm (PU '59)  
Wesley G House (IA '62)  
Harold R Hughes (NE '59)  
Stephen B Huseman (OK '91)  
Charles M Huskey (NC '72)  
Nathan J Huso (ND '77)  
Theodore Hutchcroft (IA '51)  
Donald B Irwin (IA '65)  
Dwight N Jackson (KS '57)  
Greg C Jarvis (WY '73)  
Terry H Jaspers (SD '74)  
Judson J Jesske (NE '88)  
James D Johnson (CO '56)  
D Jay Jones (PU '64)  
William L Justice (KS '60)  
Patrick Kalmes (SD '96)  
Gerald L Karr (KS '57)  
Paul C Kassel (IA '75)  
Joseph D Kasza (CO '75)  
Wayne F Keim (NE '42)  
Charles D Keller (KS '55)  
Gary R Kelly (MI '70)  
Ralph H Ketchie (NC '69)  
Gary G Kimes (IA '66)  
Michael D Kirkpatrick (PU '73)  
James R Klande (MN '54)  
Gerald E Klonglan (IA '55)  
Lloyd G Knight (ND '58)  
John Koepfle (MI '56)  
Thomas J Kopacek (MN '70)  
Jeremy D Krone (OH '00)  
Dwight Kvasnicka (MN '76)  
John Z Labrier (TT '82)  
Jerry R Ladman (IA '55)  
Eric H Lahlum (ND '89)  
F Dale Laible (IL '47)  
Michael P Lane (ID '89)  
Gregory P Lardy (ND '88)  
Brian T Larson (MN '67)  
Kenneth L Larson (IA '52)  
Ronald J Lauer (ID '70)  
Robert W Lewis (KS '58)  
Mike Liepold (SD '82)  
G Irvin Lipp (IL '64)  
Keith A Littlefield (IA '64)  
Frank A Loeffel (NE '47)  
Michael R Loenser (IA '90)  
Steven M Lonergan (IA '85)  
Edwin E Long (OK '53)  
Richard A Luckow (ND '68)  
Brett E Madison (IL '81)  
Thomas R Magill (NE '85)  
Bryan E Malone (MN '91)  
David F Malone (NE '67)  
William J Mannlein (NE '53)  
Terry K Manz (KS '62)  
Steven C Mason (PU '00)  
Allen R Mayo (PU '60)  
Brian M McCann (MS '95)  
Guy M McCaw (IA '77)  
Ryan McConaughy (WY '06)  
Jeff A McDowell (AU '76)  
Eric J McEwen (IL '91)  
Brian D McKay (WA '06)  
Robert M McNeff (NE '58)  
William G McVay (PU '52)  
Kevin C Meyer (NE '85)  
Richard L Meyer (MN '57)  
Timothy R Meyer (IA '79)  
Paul J Meyers (MN '67)  
Charles D Miksch (KS '55)  
Cletus R Mitchell (PU '52)  
Arvid M Monson (MN '57)  
John Morris (PU '62)  
Ronald L Morse (NE '59)  
Rodney G Moseman (NE '68)  
Donald L Mosher (IL '39)  
Gary L Myers (SD '71)  
Louis L Myers (IL '56)  
Donald R Myrtue (IA '60)

## Power of 7 Seminar



*This award-winning Seminar is a first class think-tank on FarmHouse Fraternity and the nation. Membership in the Power of 7 is limited to seven alumni annually who pledge to give \$7,000, a tax-deductible gift, to the Annual Fund. In return for their gift, they are invited to attend a dynamic, interactive two-day educational seminar in a casual, inviting setting. Seven top junior and/or senior undergraduate leaders also participate in this seminar in addition to FarmHouse Foundation Trustees and staff; members of the International Board and staff; and their spouses. For more information, please visit [www.farmhouse.org/Foundation](http://www.farmhouse.org/Foundation).*

## ANNIVERSARY CIRCLE

(\$106 to \$439)

James A Aasland (IA '59)  
J Nick Abraham (TR '01)  
David B Anderson (NE '89)  
Rolan E Anderson (NE '50)  
Alvin A Andrews (MN '56)  
Robert H Angus (IL '68)  
Jon C W Armstrong (KS '05)  
Barry A Aves (IL '80)  
Ted I Axland (IA '52)  
Ralph E Bailey (PU '69)  
Kyle C Bauer (KS '77)  
Robert L Baumann (OH '63)  
H Maurice Beaver (IA '40)  
Terry J Beebe (IL '79)  
Daryl Belshan (IA '02)  
Richard L Bengtson (WY '62)  
James B Berg (ND '76)  
James A Bilyeu (IL '66)  
Charles R Binau (IA '59)  
R David Bitting (IL '81)  
Chester D Black (MO '48)  
Edward H Blankenship (AU '84)  
John J Bloomfield (KS '98)  
Wilbur L Bluhm (NE '46)  
Theodore D Bogue (IA '68)  
Karl A Bollingberg (ND '82)  
Rolf A Bollingberg (ND '85)  
Clark H Bowden (IA '06)  
David M Bowen (MI '72)  
Louis J Boyd (KY '53)  
Robert E Braden (MI '42)  
Kent R Bradley (KS '85)  
William E Britz (IL '53)

Continued on next page...



# Annual Fund, cont'd

Chris A Nelson (SD '83)  
 Stephen S Nicholson (IA '75)  
 Patrick J Nolan (OH '04)  
 Wayne V Northey (IA '54)  
 Ryan M Nottingham (WA '98)  
 James O'Connell (MT '91)  
 Randy D Oberdiek (MO '81)  
 Charles M Oellermann (NE '77)  
 Myron W Off (CO '85)  
 Robert L Off (CO '64)  
 Jeffrey T Olson (SD '83)  
 Alan K Ormiston (ND '55)  
 John C Ortner (CO '04)  
 Phillip M Ostenso (MN '60)  
 Kenneth W Overhults (KY '60)  
 Bruce C Paterson (SD '79)  
 Wallace D Payne (ND '55)  
 Daniel R Pearson (MN '73)  
 Leslie W Peterson (MN '48)  
 Loren G Peterson (NE '75)  
 Donald H Pettengill (MI '58)  
 Victor C Pierrot (IA '61)  
 Roger C Pine (KS '58)  
 Gyles W Randall (MN '60)  
 Ted E Rasmussen (NE '83)  
 Joel W Rausch (SD '91)  
 Kevin J Rehder (SD '03)  
 Joel D Reiman (MN '96)  
 Jim Reithel (MI '94)  
 Keith H Remy (IA '52)  
 Tracy V Remy (IA '54)  
 Alan R Rice (CO '56)  
 Kyle G Richardson (IL '98)  
 Patrick J Robinson (KY '98)  
 Steven P Robisky (ILS '83)  
 Eugene E Rodberg (IA '85)  
 Roger J Roney (IL '61)  
 Lyle D Rovvik (SD '72)  
 Myers M Rossiter (IA '49)  
 Daniel A Rowland (PU '76)  
 Robin J Sahr (ND '81)  
 James E Samsel (NE '66)  
 Lee D Sandager (MN '46)  
 Travis L Scherer (PU '98)  
 Douglas J Schlagel (CO '91)  
 Walter H Schmidt (NE '54)  
 Marvin C Schrader (MN '56)  
 Gene L Schreibeis (WY '51)  
 Duane H Schurman (ND '69)  
 Gerald D Schwab (MI '88)  
 Eugene R Scott (NE '53)  
 Norman R Scott (WA '56)  
 Daniel J Sehner (CPP '82)  
 Robert Seiber (OK '59)  
 Larry M Seitz (KS '59)  
 Gene W Selk (NE '65)  
 Blaine S Sellman (ID '97)  
 Hubert J Shackleton (PU '58)  
 Dwight M Shappell (IA '51)  
 Jerry W Shirley (IL '65)  
 Todd W Sims (ID '89)  
 Roger P Sindt (NE '62)  
 John A Smartt (CO '55)  
 Wayne E Smith (PU '65)  
 Thomas E Speer (IA '73)  
 Scott A Spilker (NE '78)  
 M Andy Sprague (IL '86)  
 Marion E Stanley (CO '52)  
 Ray A Stevens (NE '60)  
 Gustaf Stinstrom (CPP '82)  
 Richard Stoebner (SD '75)  
 Richard C Stroh (ID '73)  
 Roger W Strohbehn (IA '52)  
 David J Sturgis (MI '58)  
 Leon A Sucht (KS '56)  
 David E Swan (NE '91)  
 John E Swanson (ND '67)  
 Tracy L Thomas (KS '80)  
 Charles M Thompson (CO '63)  
 Deane L Thompson (PU '59)  
 James M Thomsen (IA '48)  
 Donald C Thorn (CO '92)  
 George W Thrasher (PU '52)  
 E Thomas Thurber (NE '60)  
 Roger E Tilberg (SD '66)  
 Dennis A Toalson (NE '91)

## OTHER ANNUAL FUND DONORS

Donald L Ahrens (IA '62)  
 Trent B Amonett (WA '87)  
 Jack Anderson (KS '62) †  
 Jarvis W Anderson (MN '55)  
 Maxwell Anderson (WIP '07)  
 John I Ankeny (MN '48)  
 James N Archer (WY '91)  
 Walter B Armstrong (IA '80)  
 Gardner Arterberry (OK '53)  
 Timothy G Backman (ND '80)  
 Mark L Baird (PU '73)  
 Danny Bartelheimer (WA '62)  
 Edward R Barton (MI '57)  
 Bradley W Bartz (MN '80)  
 Justin H Bartz (MN '99)  
 Ralph E Beadle (CO '62)  
 Elmer M Beard (OH '77)  
 Timothy C Becker (IA '90)  
 William F Bennett (OK '49)  
 Rodney D Benson (IA '80)  
 James Bentley (MI '64)  
 Thomas L Bentley (NE '90)  
 Colin D Berg (MN '77)  
 Gregory G Bergen (NE '75)  
 Edwin M Blackburn (MI '49)  
 Fredrick L Blackmar (AU '74)  
 Barry L Bloyd (OK '64)  
 Kevin K Boggs (MO '79)  
 Eric E Bollingberg (ND '85)  
 Phil R Bornemann (OK '64)  
 David E Boswell (IA '83)  
 Christopher Bradberry (AU '81)  
 Norman G Brakken (MN '45)  
 Andrew Bromley (ND '05)  
 John A Burbank (NE '54)  
 Philip H Burger (MO '83)  
 Steven M Burger (MO '81)  
 Kenneth D Burkhart (IA '72)  
 Ralph W Burnett (IL '46)  
 Rickey D Burras (IA '79)  
 Donald L Carlson (IL '87)  
 Tim Carlson (MN '77)  
 Wayne O Carter (PU '78)  
 Kenneth C Cavanaugh (MI '37)  
 Michael Chatt (NE '66)  
 Richard T Clark (WY '59)  
 Verne E Claussen (KS '64)

Hardy Cloutier (AR '54)  
 Berli Colley (WA '61)  
 Roger E Collins (NC '60)  
 Louis M Conti (CO '84)  
 Kenneth L Converse (SD '81)  
 R J Cooper (OK '51)  
 Stanley E Cornforth (CO '70)  
 Reid W Crawford (IA '70)  
 Don R Cruise (NE '63)  
 Paul E Curtis (IL '53)  
 Richard B Curtiss (IL '58)  
 Robert G Curtiss (IL '50)  
 John Daly (WY '67)  
 Douglas A Davidson (ND '97)  
 Rollie E Deering (CO '65)  
 Duane DeKrey (ND '75)  
 James A Deutsch (PU '68)  
 Lawrence A Dimmitt (KS '61)  
 Thomas J Doherty (CO '55)  
 Frank Dooley (ND '92)  
 Gerald C Wheelock (IA '59)  
 Brett R White (NE '86)  
 Wayne A White (NE '50)  
 Paul F Whittington (AR '54)  
 Robert W Wiles (MI '63)  
 Ronald B Wiley (CO '75)  
 Stephen L Winn (KS '62)  
 Philip M Wirth (SD '86)  
 Steven G Wirth (NE '01)  
 John E Wise (IA '53)  
 Dale E Wolf (NE '41)  
 Tyler D Woolford (NE '97)  
 Brian N Woolley (IA '75)  
 David J Wright (MN '73)  
 Dale Yonker (CO '60)

Curtis A Frasier (KS '70)  
 Mark L Freese (NE '78)  
 Alex M Friedt (ND '86)  
 Thomas E Furtak (NE '68)  
 Carlyle Gauger (IA '37)  
 Ryan C Gentle (IL '98)  
 Gerald W George (MI '63)  
 Malcolm E Gigstad (KS '61)  
 David A Goodell (IL '87)  
 Daniel S Gorseth (ND '82)  
 Robert J Grandin (IA '06)  
 Otis Griffin (KY '62)  
 Herman Grill (MI '56)  
 Kurt N Gruben (IL '88)  
 Norman Gullingsrud (ND '69)  
 Gary D Haberstroh (ND '87)  
 Burton W Hable (IA '05)  
 Scott A Hackett (WA '88)  
 Larry G Hadachek (KS '76)  
 Timothy J Hadachek (KS '07)  
 John A Hale (PU '74)  
 Cedric K Hands (KS '72)  
 Alan H Hanks (NE '71)  
 Robert E Hansen (IA '68)  
 Bryan K Hanson (ND '78)  
 Jason L Hanson (ND '88)  
 Adam R Harden (TR '05)  
 Andrew P Hart (IA '77)  
 Erik C Haugerud (ID '91)  
 Jonathan A Hawley (PU '98)  
 Nathan J Heidegger (IA '88)  
 Rollie Henkes (IA '54)  
 Jeffrey R Henningsen (IA '83)  
 Nick Hercheureoder (PU '01)  
 Wendell D Herman (ND '67)  
 Douglas R Hill (ND '73)  
 Larry C Hixon (KS '60)

Adam M Hoffert (ND '07)  
 Eric Holmquist (SD '94)  
 Eugene B Hook (MN '51)  
 Benjamin JHoptroff (TN '08)  
 Steven G Horning (MN '79)  
 Keith W Houghton (KS '69)  
 Dennis W Hovelson (MN '72)  
 Chris A Hudson (IL '71)  
 Merle W Hunt (IA '42)  
 Dann E Husmann (SD '98)  
 Eric D Hyatt (TN '01)  
 Jonathan E Ireland (KS '07)  
 Robert E Ireland (KS '60)  
 Johnny J Jankovich (MO '08)  
 John P Jenkins (MO '90)  
 Jerred A Jirava (ND '98)  
 Donald G Johnsen (ND '55)  
 Dean A Johnson (CO '59)  
 Richard W Johnson (NE '54)  
 Charles R Jorgensen (IA '55)  
 Dale G Jundt (NE '61)  
 Neal A Kanel (NE '04)  
 Cale A Kassel (IA '05)  
 Kenneth W Kassel (IA '76)  
 Nicholas W Kauffman (NE '03)  
 Thomas M Keck (WA '76)  
 Earl D Kellogg (KS '60)  
 James Kemp (CO '52)  
 R Harley Kennedy (MO '39)  
 Wayne C Kennen (MO '65)  
 William J Kenworthy (PU '67)  
 Alois F Kertz (MO '64)  
 Andrew Kittle (AL '98)  
 Glenn Klein (OR '79)  
 Cernyw K Kline (MI '43)  
 Howard E Knapp (IL '82)  
 Bryan J Knoper (MI '87)

Charles W Kolar (OK '57)  
 James W Krause (NE '74)  
 Janver D Krehbiel (KS '57)  
 Brent M Kuehnast (IA '88)  
 Gerry L Kuhl (MI '65)  
 Ronald Kumor (WY '79)  
 Donald W Kvasnicka (MN '51)  
 Dennis G LaMunyon (OK '54)  
 James W Lancaster (NE '94)  
 Douglas A Larsen (IA '81)  
 David E Larson (MI '45)  
 Curtis C Lawrence (ND '62)  
 Bradley P Lebrun (ND '99)  
 Eric J Lee (MN '86)  
 William E Lee (IL '80)  
 Clark A Leeth (AU '90)  
 Randolph D Lemm (ND '76)  
 Benjamin Leu (PU '04)  
 Lloyd Limprecht (OR '69)  
 James L Lindquist (KS '70)  
 Thomas G Loafmann (OK '57)  
 A Ross Loftin (MS '81)  
 Robert Longenbaugh (CO '54)  
 Chris B Lovekamp (IL '75)  
 Donald H Lowenberg (IA '52)  
 Richard A Lowers (IA '77)  
 Christopher Lueders (MO '97)  
 Jon D Luhman (MN '89)  
 Dean Lynch (WA '71)  
 Roger R Madison (MN '62)  
 Thomas J Madson (SD '84)  
 Benjamin A Malin (IA '97)  
 Kenneth Markegard (ND '68)  
 Ryan C Marotz (IA '95)  
 Dale S Martin (PU '52)

Continued on next page...

## FRIENDS OF FARMHOUSE

*The Foundation is grateful to the friends of the Fraternity who also financially support the educational and leadership programs of FarmHouse.*

Dan & Kylee Alderks	Esther Hockett & Bob Mahoney	Karl Oltmanns
Bob & Linda Alderks	Karla Holmes	Ronnie & Judy Page
Mark R Anderson	Rob & Dawne Howard	Roger & Val Pederson
Brad & Ann Apple	Shan & Shelley Hullman	Kenneth & Rita Peters
Charles S Aubry	Gene A Irick	Brenda Powell
Roger & June Baker	Wesley & Becky Johnson	Andy & Leigh Price
Ken & Kelly Beahrs	Ryan & Leslie Johnson	Lindsey M Primrose
Roger Beardin	Norah Johnson	Jim Quisling
Jo & Bill Berryman	Dennis & Cheri Judd	Justin C Raikes
Leo & Connie Blackwell	Lorna Keefer	Mary Jo Raikes
Helen Francis Boggan	Rick & Doris Kennay	Heather Raikes
Lisa & Jesse Browning	Jeff & Nancy Kerchmar	Helen H Raikes
Christopher Brown	Mark & Brenda Knobloch	Nick & Allison Rickels
Bruno Brothers Farms	Mr. & Mrs. Dan Koch	John & Julie Runzel
David & Laura Bryan	Dr. & Mrs. Tom Koch	Bill & Joann Ryan
Tom & Molly Buhr	Linn Lesesne	Anna Sahs
Nicole Bunger	Walt & Mary Lindner	Heidi Schulz
Bill & Kathie Cink	David A Lindsey	Troy & Donna Schaumleffel
Cla-Minonk Inc.	Kris & Lynn Lowry	Barbara B Smith
Ed Council	Brian & Debbie Marks	Shawn & Rebekah Smith
Stewart Cressman	Marshall Bros. Dairy	Mary & Mike Smith
Kevin Cronquist	Gregg & Tricia McIntire	Nancy Stangler
Gwen Dahlberg	Donna McMackin	David Stollman
Brian J Emkes	Janet M Meyer	Mr. & Mrs. Glenn Swenson
Shawn & Wendy Flynn	Jeanne Middleton	Christopher J Thorp
Ernest Frieders	Ann R Miller	James & Susan Vols
Herman & Margaret Fritz	Mary Claire Mohrfeld	Dave Wallace
Russ & Laura Gant	Maxine Morine	Chris & Andrea Ward
Len & Vickie Gavin	Thomas Murphy	Karen R Weiberg
Pat & Ginny Gehret	Mr. & Mrs. David Myerholtz	Greg Welsh
Kelly R Graves	Mr. & Mrs. Lowell Myerhotz	Harold & Sandy Wilken
Barry & Jackie Hathaway	Shannon Marquis Neely	Ned Kirklun, Willis of Nebraska
Brad & Kim Hillyer	Jennifer A Niebauer	James V Woodward



# Annual Fund, cont'd

David F Martin (KS '65)	William G Moody (KY '53)	David L Rahe (IL '76)	Callum L Sears (AL '03)	Nathan M Stewart (SD '01)	Francis D Vercler (IL '47)
William Martinson (ND '70)	Charles K Morse (ND '84)	James H Ray (NE '58)	J Curwood Seefeldt (ND '71)	David N Stille (IL '81)	Kent M Vesterso (ND '67)
Michael S Marty (IA '87)	G Richard Munson (KS '73)	Francis L Reichart (KS '54)	Bren Seki (CPP '82)	Albert Sutton (NC '59)	Michael J Voxland (ND '89)
Loys L Mather (NE '59)	Benjamin F Nedved (IA '99)	James M Resch (MN '71)	David G Settergren (MN '74)	Leroy V Svec (NE '61)	Gary L Wahlgren (NE '64)
Prakash Mathew (ND '95)	Rene R Neff (PU '52)	Robert B Rhoda (PU '75)	Dale L Shaw (MI '63)	Craig D Swallow (ILS '84)	Alan K Walkley (WA '76)
Paul A Mattson (IA '53)	Peter A Neigebauer (MN '75)	Gerald F Richards (MI '47)	Floyd Shoemaker (CO '53)	Arnold R Swanson (IA '51)	Jacob L Wallgren (ND '96)
Patrick McAllister (SD '79)	Randy A Nessel (ND '03)	M Deane Rinner (IA '47) †	Dale L Siebert (ND '69)	Derek J Swenson (ND '96)	Robert F Walser (MN '49)
James M McBee (PU '80)	Jeffrey D Neumeyer (ID '82)	David G Ripplinger (ND '98)	Alvin W Siffring (NE '54)	Nathan M Taulman (PU '02)	Robert C Ward (KY '54)
Charlie McCone (SD '96)	Jeffrey M Norris (IT '89)	R Steven Robb (KS '60)	Kenneth E Silha (ND '66)	Laurent Taylor (ID '62)	Elliot S Wehner (TR '04)
Byron S McDaniel (MO '39)	David B North (IL '85)	Andrew G Robison (NE '91)	Robert H Sindt (NE '69)	Gerald R Theobald (IL '64)	Charles Y Weiser (ND '60)
Christopher J McDonald (ND '96)	Gary A Olsen (IA '76)	John E Rockwell (ID '70)	Russell J Sindt (NE '65)	Darell E Tilberg (SD '67)	Lionel O Wells (OH '58)
L Patrick McElvain (IL '70)	Daniel D Overton (CO '83)	Jack E Rossmann (IA '55)	Edward E Slettom (MN '40)	Dwight A Tober (SD '70)	Christopher T Wetzell (MN '99)
Michael P McGinn (KS '90)	Clifton D Paulsen (IA '95)	James C Rupp (CO '82)	Allen J Smith (AU '86)	Lee N Tollefsrud (ND '95)	Kendon S Wheeler (IT '78)
Grady S McMurtry (TN '67)	Gary W Paulson (ND '64)	Mark K Scanlan (KS '75)	Keven D Smith (MN '77)	John L Tomasovic (MO '53)	Neil D Wheeler (PU '85)
Eric C McPeak (KS '92)	Bradley A Peterson (CO '77)	Matthew T Schaefer (NE '04)	Merrill W Smith (PU '72)	John J Toy (NE '77)	Jeffrey G Whelan (ND '78)
Charles R McQuitty (MO '52)	Roger Peterson (IA '59)	Derek A Schardt (NE '07)	Curtis O Snodgrass (NE '85)	William S Trampe (CO '65)	Gary C White (NE '66)
Jonathan C Melvin (ND '98)	Carl L Pherson (MN '64)	A John Scheidenhelm (IL '50)	Darl E Snyder (IA '42)	Lee Trautman (ND '08)	Maurice L Williamson (PU '61)
Randal E Melvin (ND '95)	Milton L Pietz (MN '47)	Bradley J Schloesser (MN '81)	Andrew R Soukup (KS '87)	Patrick Troendle (MN '87)	Perry R Winn (MO '54)
Joey L Meyer (IA '80)	Charles L Pilmer (IA '42)	Bruce E Schmidt (ND '78)	David A Stacklin (OH '99)	Daniel G Tuhy (ND '71)	Gene Withrow (TN '61)
Curtis O Middleton (PU '52) †	Keith J Pittrich (MO '82)	Sheldon G Schmiess (ND '83)	Steven G Stacklin (OH '00)	Earl T Tveit (ND '59)	Richard F Woerner (PU '66)
Jordan A Miller (OH '07)	Frank Postma (IA '59)	Michael J Schwalbe (ND '90)	Dan Stark (CPP '82)	David H Twist (ND '66)	Vance O York (PU '52)
Ronald G Mitchell (IL '47)	Kenneth L Quinn (IL '82)	James E Schwartz (PU '65)	Loren E Staroba (ND '72)	Gary D Uken (IL '87)	Zachary J Young (IA '02)
Michael E Moffitt (IA '76)	Virgil L Quisenberry (KY '65)	William Schwartz (PU '67)	Harold B Steele (IL '41)	Ryan D Ulstad (ND '79)	Donald D Zimmerman (IA '54)
Jeffrey S Monzu (NE '89)	Timothy P Rafert (CO '89)	Thomas P Schwarz (NE '78)	Michael W Steinke (ND '91)	K Dwayne Vande Krol (IA '90)	Richard B Zoller (MN '48)



## Ruby Society

*Protect the vision of FarmHouse. Ensure its future. Give.*

The Foundation recognizes the support provided by FarmHouse undergraduate members each year through the Foundation's exclusive undergraduate giving program, the Ruby Society. To become a member of the Ruby Society, undergraduates make a gift of \$10 or more to the Foundation. All donations to the Ruby Society support the leadership books and educational materials at the Regional Leadership Conferences and Conclave. This program gives undergraduates the opportunity to support their brothers. Since its inception, undergraduate members of FarmHouse have donated over \$36,000 to the Foundation through this program.

Last fiscal year, 393 undergraduates from 17 chapters gave \$3,985 to the Ruby Society. Chapters are recognized for their participation in the Ruby Society at three different levels. Below is a complete list of chapters participating in the 2011 Ruby Society.

### Gold Level (100% participation)

Arkansas  
Minnesota  
Purdue  
South Dakota State  
Tennessee

### Silver Level (75% participation)

Nebraska

### Bronze Level (50% participation)

Washington State

### Less than 50% participation:

Idaho  
Iowa State  
Kentucky  
Michigan State  
Mississippi State

North Dakota State  
Ohio State  
Oklahoma State  
Texas A&M  
Texas Tech  
Troy  
Tarleton State Colony  
Western Kentucky



*Ruby Society recognition at the 2012 Leadership Institute*



# 100 Legacies in the Making

## We're Looking For a Few Good Men

by Bob Off (CO'64), Executive Director Emeritus

Actually, we're looking for 100 alumni and friends of FarmHouse Fraternity to step forward and leave a combined **Legacy of \$1 Million** to continue Building the Leaders of Tomorrow in perpetuity.

**Our Goal** is for 100 of us to make a new bequest or other planned gift of \$10,000 or more by **Dec. 31, 2012**. Ten thousand dollars is the threshold the Foundation Trustees have established for a named endowment that becomes a permanent part of the Foundation's support for the Fraternity.

To date, 27 alumni have joined the 100 Legacies campaign and pledged over \$859,000 in estate gifts. We haven't reached our goal--yet! **With your help today we can do it!**

Providing for a bequest or other planned gift doesn't require a lot of time or expense. It can be as easy as including a simple bequest in your will, adding a codicil to an existing will, or naming the Foundation as the beneficiary of a portion of an IRA or insurance policy.

### In Return:

- You can do more for FarmHouse, but not today, because you are not actually making this gift during your lifetime.
- You have access to your assets throughout your lifetime.
- Your generosity and leadership will be recognized and appreciated by FarmHouse Fraternity & Foundation.

**The Result:** "100 Legacies In The Making" will grow the Foundation's endowment by \$1 million (the endowment is \$5.3 million at present) and enable the Foundation to help build the Fraternity of the future.

You may designate your bequest or other planned gift (such as a charitable trust, gift annuity, naming the FarmHouse Foundation as the beneficiary of an IRA or insurance policy) to provide

income for:

- The Foundation Trustees to use at their discretion to support the educational programs and operation of FarmHouse International Fraternity & Foundation.
- The leadership training programs of the International Fraternity such as the FarmHouse Leadership Institute, the Regional Leadership Conferences and Conclave. You may designate this support to benefit a specific chapter.
- Academic scholarships for our undergraduate and/or graduate student brothers in a specific chapter or across the FarmHouse membership.

**To participate** in "the 100 Legacies In The Making" you need to provide:

- A copy of that portion of your will or charitable trust arrangement that pertains to your planned gift to the FarmHouse Foundation, and specifies the dollar value of the gift, or the percentage of your estate or trust and the value of that percentage at current value.
- Or a signed and dated statement from you or your attorney of your intent to make a bequest, or to direct the proceeds of a charitable trust to the Foundation of a specific dollar amount or percentage of your estate or trust and the value of that percentage at current value.
- Also please give us your birth date.

**Or if you prefer, you can enjoy the fruit of your gift today.** After considering an estate or other planned gift, several of those numbered in the 27 donors thus far have decided they'd like to see their gift in action today Building the Leaders of Tomorrow.

If you wish your gift to remain anonymous, you can still be one of the 100 Legacies, and will be listed as "Anonymous".



## 100 Legacies in the Making

To date, 27 alumni have joined the 100 Legacies campaign and pledged more than \$859,000 in estate gifts.

### 100 Legacies Donors

Homer Barnett (MN '40)  
Rick Berg (ND '78)  
Brent Bible (PU '91)  
Martin Clark (IA '49)  
Richard Clark (WY '59)  
Ward Edwards (IL '32)  
Roy Frederick (ND '63)  
Larry Hageman (OH '78)  
Michael Holmberg (MN '68)  
Terry Jaspers (SD '74)  
Dale Kennen (MN '60)  
Jay Koths (MI '47)  
Jerry Lindley (PU '52)  
Arthur Magnusson (MN '37)  
Patrick McAllister (SD '79)  
G. Richard Munson (KS '73)  
Scott Nagel (MN '85)  
James Parochetti (IL '54)  
Don Pettengill (MI '58)  
Gene Pickler (NC '54)  
Gyles Randall (MN '60)  
John Riley (KS '79)  
Louis Rosenau (ND '68)  
Richard Ross (ID '57)  
Dean Sims (IL '37)  
Vince Ulstad (ND '78)  
Pete Wenstrand (IA '70)

Please send the requested documentation to Allison Rickels, Executive Director, The FarmHouse Foundation, 7306 NW Tiffany Springs Parkway, Suite 210, Kansas City, MO 64153. This information will be kept confidential.

If you have any questions or would like additional information, please contact Allison at [allison@farmhouse.org](mailto:allison@farmhouse.org), 800-722-1905, or me at [bob@farmhouse.org](mailto:bob@farmhouse.org) or at 816-799-0817.

**Be one of the 100 to leave a legacy of a lifetime!**





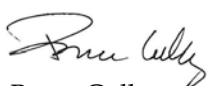
# Financial Statements

Dear FarmHouse Foundation  
Board of Trustees:

I have audited the accompanying Statement of Financial Position of The FarmHouse Foundation as of February 29, 2012, and the related Statement of Activities, Changes in Net Assets and Cash Flows for the year then ended. These financial statements are the responsibility of the Foundation's management. My responsibility is to express an opinion on these financial statements based on my audit.

I conducted my audit in accordance with auditing standards generally accepted in the United States. Those standards require that I plan and perform the audit to obtain reasonable assurance about whether the financial statements are free from material misstatement. An audit includes examining, on a test basis, evidence supporting the amounts and disclosures in the financial statements. An audit also includes assessing the accounting principles used and significant estimates made by management, as well as evaluating the overall financial statement presentation. I believe that my audits provide a reasonable basis for my opinion.

In my opinion, the financial statements referred to above present fairly, in all material respects, the financial position of The FarmHouse Foundation as of February 29, 2012, and the results of its operations and its cash flows for the year then ended in conformity with accounting principles generally accepted in the United States.



Bruce Culley  
Certified Public Accountant

## Statement of Financial Position

(as of February 29, 2012)

### ASSETS

Cash and Cash Equivalents	\$729,253
Contributions Receivable	
<i>(Net of discount of \$1,020,508 and Allowance for Doubtful Accounts of \$284,990)</i>	\$1,416,363
Interest Receivable	\$13,007
Notes Receivable – FarmHouse Chapters	\$10,532
Prepaid Expenses	\$2,004
Investments at Fair Market Value	
Equity Securities	\$2,636,852
Debt Securities	\$2,050,343
Other Investments	\$88,533
Value of Interest in Split-interest Agreements	\$253,265
Office Furniture and Equipment	
<i>Net of Accumulated Depreciation of \$26,712</i>	<u>13,069</u>
<b>Total Assets</b>	<b><u>\$7,213,221</u></b>

### LIABILITIES

Accounts Payable – Vendor and Fraternity	\$12,936
Annuities Payable	<u>\$23,770</u>
<b>Total Liabilities</b>	<b>\$36,706</b>

### NET ASSETS

Unrestricted – Designated for Foundation Councils	\$1,445,548
Unrestricted – Undesignated	<u>(\$611,208)</u>
Total Unrestricted	\$834,340
Temporarily Restricted	\$1,010,980
Permanently Restricted	<u>\$5,331,195</u>
<b>Total Net Assets</b>	<b>\$7,176,515</b>

<b>Total Liabilities and Net Assets</b>	<b><u>\$7,213,221</u></b>
---	---------------------------

Continued on next page...



## Statement of Activities

(as of February 29, 2012)

	Unrestricted <u>Net Assets</u>	Temporarily Restricted <u>Net Assets</u>	Permanently Restricted <u>Net Assets</u>	<u>Total</u>
<b>REVENUES</b>				
Contributions	\$1,034,940	\$544,127	\$402,079	\$1,981,146
Alumni Dinner Revenue	\$3,079	-	-	\$3,079
Investment Income	\$12,960	(\$6,813)	(\$82)	\$6,065
Changes in the Value of Split-Interest Agreements	(\$3,034)	-	(\$2,200)	(\$5,234)
Net Unrealized Gains or (Losses) on Investments	<u>\$43,494</u>	<u>\$137,906</u>	<u>\$1,028</u>	<u>\$182,428</u>
<b>Total Revenue and Support</b>	<b>\$1,091,439</b>	<b>\$675,220</b>	<b>\$400,825</b>	<b>\$2,167,484</b>
<b>NET ASSETS RELEASED FROM RESTRICTIONS</b>				
Satisfaction of Program and Time Restrictions	<u>\$363,326</u>	<u>(\$363,326)</u>	-	-
<b>Total Revenues</b>	<b>\$1,454,765</b>	<b>\$311,894</b>	<b>\$400,825</b>	<b>\$2,167,484</b>
<b>EXPENSES</b>				
Academic Support	\$1,660,972	-	-	\$1,660,972
Management and General	\$161,687	-	-	\$161,687
Fundraising	<u>\$217,730</u>	-	-	\$217,730
<b>Total Expenses</b>	<b><u>\$2,040,389</u></b>	-	-	<b>\$2,040,389</b>
Increase (Decrease) in Net Assets	(\$585,624)	\$311,894	\$400,825	\$127,095
<b>NON-OPERATING ACTIVITIES</b>				
Annual Earnings to Principal	-	(\$2,340)	\$2,340	-
Net Assets, Beginning of Year	<u>\$1,419,964</u>	<u>\$701,426</u>	<u>\$4,928,030</u>	<u>\$7,049,420</u>
<b>Net Assets, End of Year</b>	<b><u>\$834,340</u></b>	<b><u>\$1,010,980</u></b>	<b><u>\$5,331,195</u></b>	<b><u>\$7,176,515</u></b>



# How to Plant Seeds with the FarmHouse Foundation

*Giving Opportunities That Make a Difference*

## Your Support

The Foundation is grateful for the hundreds of FarmHouse members and friends who contribute each year. It is their support that makes all FarmHouse educational and leadership programs possible. The following are ways to support the FarmHouse Foundation:

## Annual Support

These gifts typically arrive in the form of checks, credit card gifts or gifts of stock. Most donors do not restrict the use of their annual gifts. This allows gifts to be allocated to the areas of most critical need.

## Online Donations

The Foundation accepts donations online through PayPal, which accepts Visa, MasterCard, American Express, Discover and electronic checks. To make a gift online, please visit us at [www.FarmHouse.org/Foundation](http://www.FarmHouse.org/Foundation).

## Electronic Transfer Gift Program

This program allows you to have money withdrawn directly from your checking or saving account without having to write monthly checks or make one substantial gift. Gifts can be withdrawn either monthly or quarterly, on either the 1st or 15th of the month.

## Gifts of Grain

The Foundation can accept gifts of grain. When making such a gift you will receive a tax deduction, or if you don't itemize, it will reduce the income you have to pay taxes on. For more information about making a gift of grain, please contact the Foundation.

## Memorial and Honorary Gifts

A memorial or honorary gift is a thoughtful way to recognize a brother's life and accomplishments. Any amount can be directed toward this type of recognition. Memorial gifts are acknowledged to the family while honorary gifts are acknowledged to the individual.

## Stock Gifts

Stocks can be transferred electronically from your brokerage account or can be sent through the mail if held in certificate form.



## Matching Gifts

Your employer may have a matching gift program that can multiply your support. Please ask your personnel office for the necessary forms.

## Endowment & Named Funds

Permanently endowed funds may be established and named in accordance with a donor's wishes through gifts of \$10,000 or more.

Endowments may also be created with smaller gifts that the donor pledges to increase, over five years, to the \$10,000 level. Endowment funds provide a constant source of income for the Foundation and are spent with careful consideration of the donor's intentions. Choosing to endow and name a Fraternity program or scholarship is a terrific way to Permanently establish and recognize your legacy in FarmHouse.

## Planned Gifts

Long-range estate and financial planning can enable you to make a substantial contribution to a program or project of your choice in a manner consistent with your overall charitable and personal commitments. Some examples of planned gifts include bequests, insurance policies, charitable remainder trusts and charitable gift annuities. The Foundation recognizes alumni who have made such gifts as members of the FarmHouse Futures Fund and now as part of the "100 Legacies In The Making."

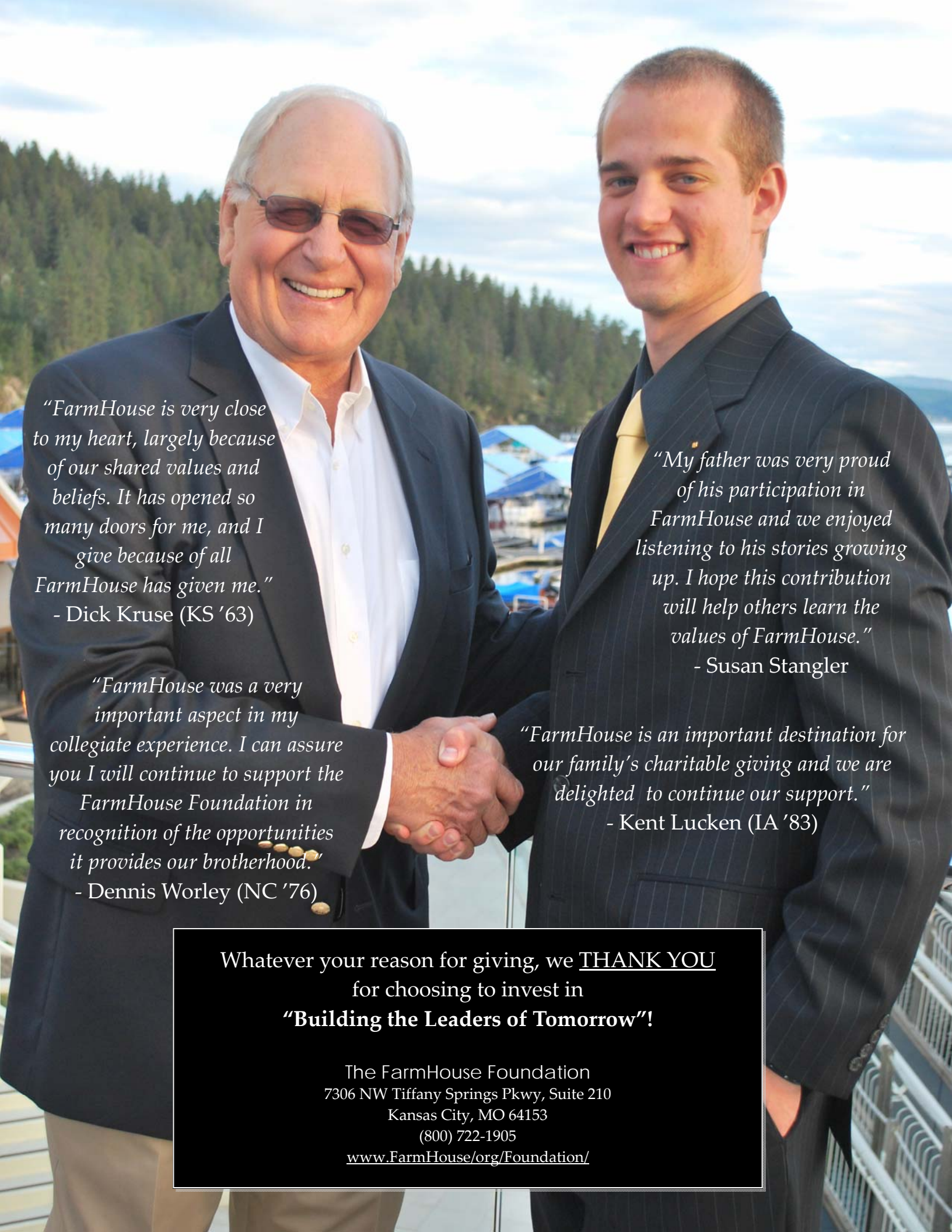
## Restricted Gifts

Some alumni choose to restrict their gifts to specific programs, scholarships, a foundation council or building fund. For example, one alumnus may ask that his gift be used solely for scholarships while another alumnus may direct his gift to the Leadership Institute. Both of these gifts are acceptable and welcomed. The Foundation does retain the right, however, to decline any gift that does not meet the approved purposes of the Foundation or would be overly restrictive.

## For more information please contact:

The FarmHouse Foundation  
7306 NW Tiffany Springs Pkwy, Suite 210  
Kansas City, MO 64153  
Phone: (800) 722-1905; Fax (816) 891-0838  
Email: [Allison@FarmHouse.org](mailto:Allison@FarmHouse.org) or [Bob@FarmHouse.org](mailto:Bob@FarmHouse.org)



A photograph of two men shaking hands outdoors. The man on the left is older, with white hair and sunglasses, wearing a dark suit jacket over a white shirt. The man on the right is younger, with short brown hair, wearing a dark pinstriped suit jacket over a white shirt and a yellow tie. They are standing on a balcony or deck with a railing. In the background, there are green trees and a blue sky with light clouds. The overall scene is bright and positive.

*"FarmHouse is very close to my heart, largely because of our shared values and beliefs. It has opened so many doors for me, and I give because of all FarmHouse has given me."*

*- Dick Kruse (KS '63)*

*"FarmHouse was a very important aspect in my collegiate experience. I can assure you I will continue to support the FarmHouse Foundation in recognition of the opportunities it provides our brotherhood."*

*- Dennis Worley (NC '76)*

*"My father was very proud of his participation in FarmHouse and we enjoyed listening to his stories growing up. I hope this contribution will help others learn the values of FarmHouse."*

*- Susan Stangler*

*"FarmHouse is an important destination for our family's charitable giving and we are delighted to continue our support."*

*- Kent Lucken (IA '83)*

Whatever your reason for giving, we THANK YOU  
for choosing to invest in  
**"Building the Leaders of Tomorrow"!**

The FarmHouse Foundation  
7306 NW Tiffany Springs Pkwy, Suite 210  
Kansas City, MO 64153  
(800) 722-1905  
[www.FarmHouse/org/Foundation/](http://www.FarmHouse/org/Foundation/)