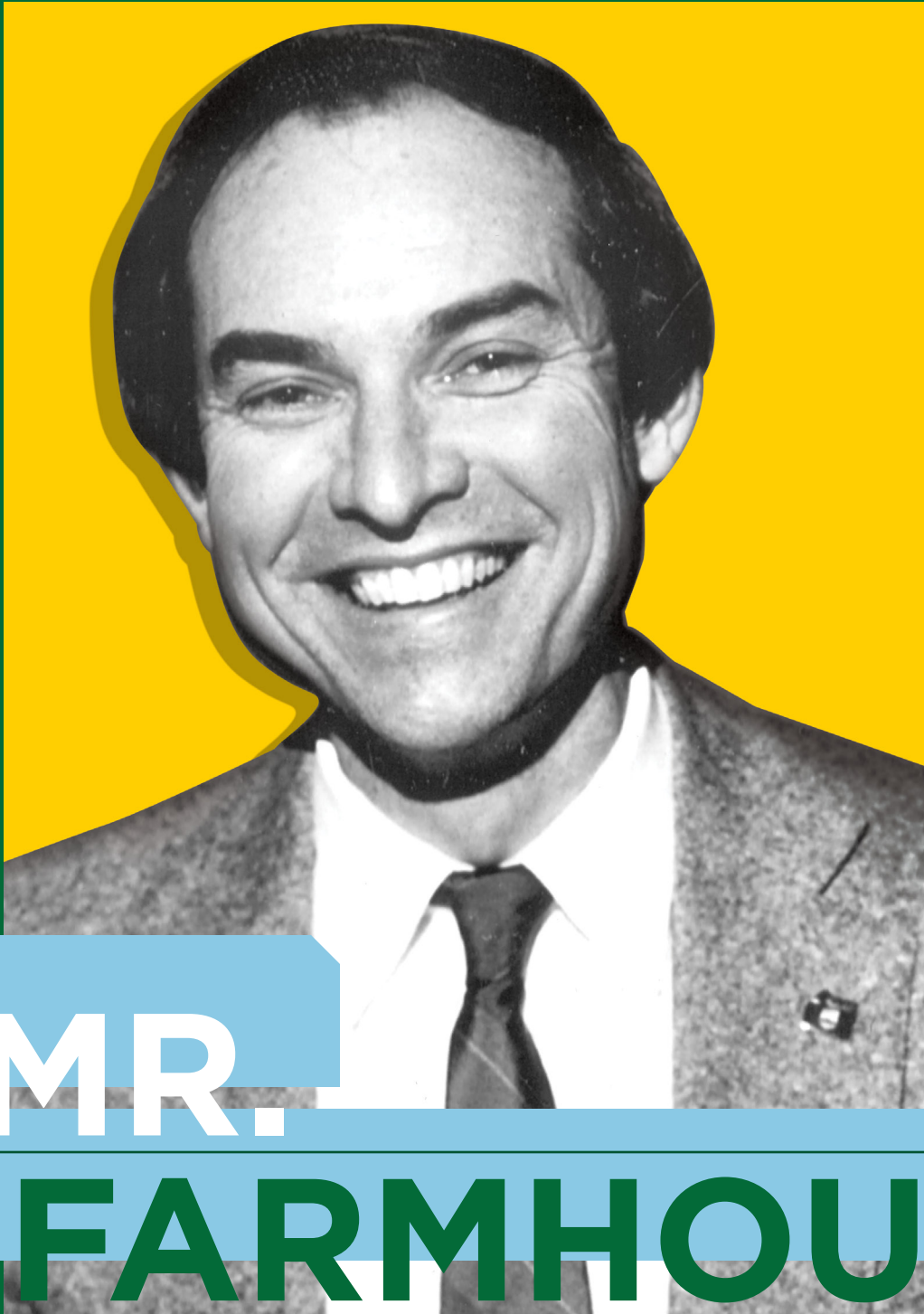


Pearls & Rubies

THE MAGAZINE OF FARMHOUSE FRATERNITY

YEAR 112 / SUMMER 2017



20

After 44 years of service to the Fraternity and Foundation, Bob signs Off as the Executive Director Emeritus of the Foundation.

a timeline of

MR.

FARMHOUSE

1972

2017

Bob Off (CO 64),
Master Builder

INSIDE THIS ISSUE

Thank you, Chad! 8

| Our Chapters 10

| Celebrating the Campaign 26



“Progress shall mark our every step.”

THIS IS A PHRASE every FarmHouse man knows well and says often. As we reach the half way point of this biennium, it is an opportunity for us to reflect on what this phrase means to all of us as FarmHouse men. We should be proud of where we as a Fraternity are today, and excited for the progress that will continue to mark our steps.

Since the launch of our new brand at last year’s Conclave, the International Fraternity has created a new website, redesigned *Pearls & Rubies*, and enhanced our social media presence. In conjunction with this issue of our magazine, we also launch our new online store. This new store provides both undergraduate members and alumni with an opportunity to express our support for FarmHouse through branded clothing, jewelry and other items.

FarmHouse continues to build on a decade of growth, reaching a record membership of 1,733 during the last academic year. The International Fraternity also chartered its newest chapter, Wichita State University (WSU). For me, as both a proud Kansas native and Kansas State alum, it has been truly rewarding to watch the men of the WSU chapter grow and dedicate themselves to the principles of FarmHouse Fraternity.

We anticipate further growth in the 2017–18 academic year. The men of the University of Nevada-Reno continue to mark progress in their steps toward becoming a chapter. They have already made a positive impact on the Greek community on campus. Last semester, they were recognized as the top Fraternity on campus academically, with a 3.33 grade point average, continuing the proud tradition of academic excellence among FarmHouse men.

In the fall semester, Sigma Omega, a 40-year old local fraternity at the University of North Georgia will affiliate with FarmHouse. I had an opportunity to meet the men of Sigma Omega earlier this year and was impressed by their quality and character. Their transition to becoming a FarmHouse chapter will strengthen our international brotherhood, adding another impressive group of men to our ranks. During that same semester, we will also establish

an associate chapter at Oregon State University, which will be followed by an expansion initiative at Arizona State University in the spring.

Next year isn’t just about expansion. The International Fraternity will also provide increased resources for existing chapters. The Fraternity staff will collaborate with and strengthen chapters through conducting consultation visits, facilitating leadership training and providing risk management tools. And the Fraternity will continue to offer several award-winning educational programs to our student leaders.

None of this would be possible without the generous support of alumni and friends through the FarmHouse Foundation. In February, the Foundation concluded the most successful campaign in our history, raising \$23.6 million. These funds are critically important in providing opportunities for FarmHouse men to have high-quality buildings in which to live, as well as opportunities to learn, lead and grow. I encourage you to join me in making a tax-deductible gift to the FarmHouse Foundation this month.

Finally, the International Fraternity welcomes a new Executive Director and Chief Executive Officer. Christian Wiggins joined the Fraternity’s staff on June 1. He brings significant experience in higher education, non-profit leadership, and business operations management to the Fraternity. His commitment to the fraternal movement and FarmHouse values, along with his unique mix of experiences, skills, and leadership style will position the Fraternity for continued growth and a continued focus on creating a positive member experience.

Looking to the next half of this biennium, I am confident that through working together, we will continue to ensure that “progress shall mark our every step.”

Fraternally,

A handwritten signature in black ink, appearing to read "Gabriel Eckert".

Gabriel Eckert (KS 95), CAE
President, International Executive Board

PRESIDENT@FARMHOUSE.ORG



Wichita State Chapter chartering, April 23, 2017

Calendar

August 18-20, 2017

Volunteer Leadership Summit
National 4-H Conference Center, Washington, D.C.

November 11, 2017

Bob Off Celebration
Joint Fall Boards Meeting
Minneapolis, Minn.

January 4-7, 2018

FarmHouse Leadership Institute
Kansas City, Mo.

January 26-28, 2018

FarmHouse GROWS
Kansas City, Mo.

April 21-23, 2018

12th Annual Foundation Power of 7 Seminar
TBD

May 16-18, 2018

To Be and Become: Emerging Talent Retreat
Kansas City, Mo.

May 19-26, 2018

The Journey: FarmHouse
Honduras

July 25-28, 2018

50th Biennial Conclave
Kansas City, Mo.

IN Memoriam

DARL EVERETT SNYDER (IA 44), Master Builder, (pictured) passed away on February 25, 2017, just eight days short of his 95th birthday. From 1959-63, he served as part-time executive director of FarmHouse International Fraternity, assuming this role full-time from 1963-69. Read more on page 39.

Pearls & Rubies

introduces two new ways to get involved.

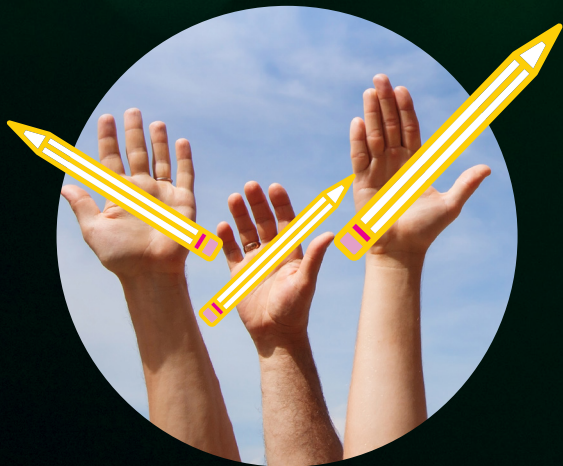
Pearls & Rubies is excited to announce two new initiatives that will better enable us to share the FarmHouse story and involve more members in the process.

COMING
FALL 2017

THE **innovAtion** ISSUE

INNOVATION IS WHEN YOU PUT AN IDEA INTO ACTION

The next several issues of *Pearls & Rubies* will aim to share our story around a centralized theme or idea. It's no secret that FarmHouse has been an interfraternal trailblazer, thus it's only fitting that our first theme will celebrate the innovative spirit of our members. If you or a brother has a personal story of innovation, big or small—in your professional life, in research or education, we'd love to share it! Send story ideas to jared@farmhouse.org along with contact information.



HELP US SHAPE THE FARMHOUSE STORY

Do you keep in regular contact with your FarmHouse brothers? Or, do you have a knack for finding unique stories? *Pearls & Rubies* is forming a volunteer-based editorial board to assist in finding FarmHouse stories and connecting the staff with brothers and stories we may not otherwise know about. The editorial board will include members from a variety of areas of interest, chapters and generations. To express interest, reach out to jared@farmhouse.org.



Pearls & Rubies

EDITOR-IN-CHIEF

Christian Wiggins

DESIGN EDITOR

Jared Horman

CONTRIBUTORS

Gabriel Eckert (KS 95)

Chad Harris (IA 98)

Heather Mathews Kirk

Kent Kroger (IA 98)

Thomas Marten (SIU 11)

Michaela Norton

Robert Off (CO 64)

Allison Rickels

Andrea Ward

Braden Wilson (CO 13)

POSTMASTER

U.S. address changes to

Pearls & Rubies,
FarmHouse Fraternity, Inc.,
7306 NW Tiffany Springs Parkway,
Suite 310,
Kansas City, MO 64153-9905.

Canadian return address:

Publications Mail Agreement
#40043510,
Station A; P.O. Box 54;
Windsor, Ontario N9A 6J5.

Pearls & Rubies

(USPS 424-540) is an educational and alumni publication published by FarmHouse Fraternity, Inc., and The FarmHouse Foundation. Nonmember subscriptions are available for \$25 per year.

7306 NW Tiffany Springs Parkway,
Suite 310, Kansas City, MO 64153;
phone: (816) 891-9445;

FHHQ@FarmHouse.org

FarmHouse.org

FarmHouse is a proud member of:



advocate | collaborate | educate



FRATERNITY
COMMUNICATIONS
ASSOCIATION



Features

8 Thank You, Chad!

While serving FarmHouse for over 10 years as executive director, Chad Harris (IA 98) led our organization through an exceptional period.

10 Our Chapters

A glance at the life of an undergraduates throughout the year.

20 A Timeline of Mr. FARMHOUSE

A look at the key points of impact Bob Off has seen during his service to our Fraternity.

26 Celebrating the Campaign

An overview of the results of the Foundation's Live. Learn. Lead.—The Campaign for FarmHouse.

34 The Journey 2017

A few excerpts from a Journey: FarmHouse participants Journal.

Departments

From the desk of...	i
FarmHouse Flashback	1
The Landscape	4
Membership Growth	6
Staffing Updates	18
Foundation Donors	28
Foundation News	32
Alumni News	36
In Memoriam	39
FarmHouse Photo	41



advocate | collaborate | educate

The Future of Fraternities

Fraternity is at a turning point—a critical moment.

BY HEATHER MATHEWS KIRK, *Chief Communications Officer, NIC*

ONE MIGHT SAY heightened media coverage fueled the fire to bring us here. While the scrutiny has perhaps never been greater, the media doesn't define this crux.

Others might say the high-profile incidents mounting on college campuses landed us here. While those shine a light on what must be transformed, they also do not define this moment.

What makes this moment—this crossroads—distinct, unlike any other in our long history, is the unprecedented collaboration of leaders and organizations working together toward change.

In the fall of 2015, FarmHouse and more than 65 other men's fraternities came together to chart a bold course for the future. Their work resulted in sweeping changes to the North-American Interfraternity Conference (NIC) aimed at improving campus fraternity communities, NIC 2.0.

This extraordinary collaboration enabled the reshaping of the 108-year-old organization that will enact positive changes to ensure the fraternity movement thrives in the future. In short, this collaboration will allow us to foster the transformation needed to create the vibrant, healthy fraternity communities—one community at a time.

community in which it resides.

This concept also applies on the national level. No single organization has the ability to impact culture on a scale grand enough to place it above the influences of the rest. Today's interconnected world no longer allows one chapter or organization to live in isolation.

To this end, to improve one fraternity, collaboration among all fraternities is required.

FarmHouse and the other NIC member fraternities are investing at a historic level, so we can achieve our vision to impact campus communities through increased, strategic support based on the five new priorities of the NIC:

1. Create an effective grassroots program for all Interfraternity Councils (IFC) and provide exceptional campus support to strengthen and build healthier fraternity communities.
2. Develop consistent educational programming for all IFC officers, staff and volunteers.
3. Create a database allowing members to make data-driven decisions, share best practices and streamline operations.
4. Lead a sophisticated public relations effort to advance the "Fraternity" brand.
5. Produce effective advocacy programs to strengthen higher education partnerships and utilize governmental and legal affairs.

Role Modeling

As you will see in the coming years, NIC 2.0 is a cohesive effort to bring about changes in the fraternity industry that many have been talking about for years. It will be a force to move beyond conversation and ideas scrawled on flip charts into tangible action moving the needle.

The new NIC will still be a trade association for the fraternal industry, but a cultural shift will align with these reframed priorities. With this new vision, we must lead from the front rather than behind on key issues, (re)building the confidence of

our stakeholders.

We will develop and nurture meaningful relationships, role model effective and efficient business practices, and devise and share operational strategies from which all of our members can benefit. We must exhibit and demand excellence and continuous improvement at all levels, employing initiatives enhancing accountability.

Our members' increased financial commitments will allow us to be more proactive and solution-oriented. We believe an association of like-minded and values-based fraternities is an essential vehicle to provide a clear and compelling strategy for moving our industry forward.

In becoming an industry role model, we cannot lose sight of the values and practices we hold sacred. We will continue to defend the opportunities of our students to thrive in organizations by joining in the time and manner that best suits their development. Equally as important, through nearly unanimous passage of NIC 2.0 reforms, we have embraced elevated standards, greater partnership with higher education and a willingness to take on the sacred cows holding our industry back.

Hitting Reboot

In our case, rebooting is not as easy as it is on your laptop. Over the next several years, we ask for your patience. Our vision will take time to be realized. We know you have high expectations of us—we do, too—and we will strive to exceed them in due course.

We need you to tell the powerful story of fraternity and share what it can bring to our students and our communities. We need you as a teammate to work with us to defeat stereotypes and defend fraternity.

The future of fraternity is in the present. Collectively, we must seize the moment to push the needle forward. Together, we can create vibrant, healthy fraternity and sorority communities.

Let's get to work. *



The Landscape is the first of a six part series focusing on the current landscape on our college campuses.

Raising the Mean

When a new fraternity chapter opens, it is only a matter of time before this group moves toward the mean on campus—before culture trumps training. In short, an individual group is only as good as the

25 Accomplishments in Year 1 of NIC 2.0

CAMPUS SUPPORT

1. Developed **Campus Support Model** to better support and connect with local fraternity communities. Includes: consultation, assessment, programs, crisis communication support, and tools for recruitment and public relations, etc.

- **228 campuses have joined new model**—26 at our higher levels of support.
- **4 regional staff** will work with campuses and IFCs this fall.
- **18 IFCs have purchased insurance** coverage to protect students, volunteers and staff as they implement peer governance.

2. Raised **\$300K for campus grants** to engage in Campus Support Model

3. Began development on campus-wide **fraternity/sorority annual assessment** to identify needs and programming gaps.

4. Developed an **Alumni IFC** model to support the local community.

5. Created on-campus **training program for alumni volunteers** in the areas of advising, fundraising and safe housing.

6. Focused on building **relationships within higher education:**

- Hosted AFA program for 400 campus professionals to outline Vision for Fraternity Communities, Campus Support Model.

- Partnered with NASPA to host Summit for 150 interfraternal partners and VPs of Student Affairs.
- Visited conferences (SEC, Big 10, Florida VPSAs, etc.) and key campuses.

7. Collaborating with interfraternal organizations on **campus response protocols for discipline and crisis management** situations.

EDUCATION

8. Brought **IFC Academy to 600 Council leaders** through partnership with major regional Greek conferences. Includes training on: peer governance, recruitment, PR, strategic planning and diversity/inclusion.

9. Developed LAUNCH, a one-day, on-campus program to assist with **chapter president and council officer transition**.

10. 919 students attended 14 sessions of Undergraduate Interfraternity Institute (UIFI), our premier leadership experience that helps fraternity/sorority members **take their chapters and communities to the next level**.

11. Conducted training for over 100 fraternity **consultants/field staff** about creating cultural change on campus.

12. Collaborated with 15 educational partners to provide training on **social norming, bystander intervention, anti-hazing, and prevention of sexual violence** for Campus Support Model.

13. Developing **PRIME, The Summit of Interfraternity Council Presidents**, where leaders take a deeper look at what makes a high-performing IFC.

DATA DRIVEN

14. Building **data warehouse** to track industry trends like academic performance, housing, campus staff support, membership, and performance of service by campuses and organizations.

15. Established **Center for Fraternal Excellence** as a co-operative to provide fraternal organizations with back-end accounting, IT and human resources services.

PUBLIC RELATIONS

16. Developed **industry-wide crisis communication** practices and conducted training for NIC fraternities.

17. In partnership with our PR firm Edelman, provided **crisis/PR support** on over 100 issues, assisting 33 fraternities and 16 IFCs.

18. Published new NIC and NIC Foundation **websites**.

19. Implemented a **media and social media monitoring dashboard** for the NIC and all member fraternities allowing each to monitor its brand.

20. Developed the **Vision for Fraternity Communities** to outline phased, campus-by-campus approach to creating change in fraternity communities.

GOVERNMENT RELATIONS

21. Renewed **Government Relations priorities**

- Single-sex/gender experience
- Freedom of association
- Due process protections
- Tax-deductible gifts for chapter houses
- Improper reporting requirements
- Anti-hazing measures

22. 100 students and 125 alumni **lobbied on Capitol Hill** for tax deductibility for chapter house donations (Collegiate Housing and Infrastructure Act [CHIA]).

23. Provided input and support for the REACH Act, bipartisan **federal anti-hazing legislation**.

24. Launched **interfraternal grassroots campaign** in which members encouraged legislators to include CHIA in upcoming tax reform.

25. Partnered with **Fraternity & Sorority Political Action Committee and FS Action Fund** to strengthen our advocacy efforts.

FarmHouse Expansion

In recent years, fraternity expansion has grown to become an industry of its own. The days of showing up on a campus, pinning a group of men and letting them petition to become a chapter are over . . .

Fraternities have had to adapt to campuses' ever-growing requirements for expansion by focusing more on relationship building, selling the organization through marketing and presentations, and developing programs to support and develop new colonies into healthy and sustainable chapters.

Over the past year, the FarmHouse's staff

has spent a lot of time and energy refining our growth strategy to stay current with today's environment and look ahead to the future.

With this in mind, we highlight FarmHouse's expansion process so all members can remain informed and know how they can help support an expansion near them in the future.

HERE'S A LOOK AT HOW A NEW EXPANSION PROJECT BEGINS:

1
Each summer, the staff researches over 400 campuses across North America, tracking graduation rates, caliber of incoming students, growth trends, the health of the fraternity community on campus, etc., to identify the best campuses for FarmHouse.

2
Once identified as a targeted campus for growth, the staff contacts the Fraternity & Sorority Life Advisor at that university to assess the campus environment, note other organizations scheduled to expand on campus and learn more about their expansion process.

3
If a university supports open expansion or has opened for expansion, a letter will be sent from the Chief Executive Officer to the Interfraternity Council (IFC) and the Office of Fraternity and Sorority Life (OFSL), notifying them of FarmHouse's interest to bring a new group to their campus.

4
Typically, an expansion proposal is also prepared and sent to IFC and OFSL, outlining the history of our organization, our values, and our expansion process. Each proposal highlights the added value of establishing a FarmHouse chapter on campus, and provides a detailed look at FarmHouse programs and leadership development.

5
The staff will often times send out an electronic survey to all alumni living near a university to gauge alumni interest. The information we collect helps determine whether or not we would have enough local support for an expansion and serves as a selling point to the campus. Please note that these surveys are often preliminary and there is no guarantee we will be able to expand at that campus in the future.

6
If FarmHouse is invited to present, the Chief Executive Officer will present to the campus community and share our values, membership programs, and plans for community involvement. Sometimes we have the opportunity to invite alumni to attend the presentation. This adds value and invitations will typically be sent out a few weeks in advance.

Membership Growth



If you're interested in volunteering with an upcoming expansion or want to know where FarmHouse is expanding in the future, contact Christian Wiggins, Chief Executive Officer, at christian@farmhouse.org.

7

If selected by the campus, we will set a date for expansion and begin the process of identifying alumni volunteers to work with the new group. Local alumni will receive an invitation to attend a meeting a few months prior to the effort.

8

Occasionally, "interest groups" will contact the expansion team and request to become a chapter of FarmHouse. Unless the group is on a campus previously targeted for growth, and has the full support of the Office of Fraternity & Sorority Life, we will typically not endorse them. However, we vet every interest group that contacts us.

9

Once the colonization begins, two members of the expansion staff will spend four to five weeks at the campus recruiting campus leaders who align with FarmHouse's values. This initial group of men will serve as the founding father class. During this time, the expansion staff will also work to recruit and train our advisory team.

10

After the founding father class is recruited, the expansion staff will work with the associate chapter's educational leadership consultant to begin a period of time to appoint and train officers, facilitate our Chapter Readiness & Orientation Program (CROP), provide support to the founding fathers, and begin integrating the associate chapter into the campus community.

11

Following the colonization semester, the associate chapter will work to meet our charting objectives in order to charter. Typically, this takes 12 months following the expansion semester. Once the colony has met the Chartering Objectives, the International Executive Board (IEB) will vote to charter the associate chapter.

12

Following a vote by the IEB, the associate chapter will be installed. Members, alumni, guests and all FarmHouse chapters are invited to attend in celebration of the chapter.



UPCOMING EXPANSIONS

FALL 2017	SPRING 2018
1. OREGON STATE 2. NORTH GEORGIA	3. ARIZONA STATE
FALL 2018 TBD	SPRING 2019 4. IOWA 5. UC - BERKELEY



Thank you, Chad!

Your leadership advanced FarmHouse in remarkable ways

BY: KENT KROGER (IA 98), IEB DIRECTOR

While serving FarmHouse for over 10 years as executive director, Chad Harris (IA 98) led our organization through a period of record growth and evolved our member experience in new and impactful ways.

The list of accomplishments is long

Chad's bold vision for advancing our mission in strategic and innovative ways challenged us to think big and increase our reach. This is obvious through our record growth but he also assured the member experience continued to evolve and remain relevant.

His passion for educational programming led to the creation of six conferences and initiatives. The caliber and quality of these programs impacted many FarmHouse men and are typical of much larger organizations.

In addition, he also led a major brand evolution. The result was a fresh, modern set of brand elements that connected our rich history with a positive, forward-thinking vision for the future. This is a critical component as we look to continue growing and expanding our reach.

Accomplishments under Harris' tenure:

The individual impact is even greater

Celebrating accomplishments is essential but it is also important to recognize the individual impact Chad made through his extensive network of strong relationships. As a friend and brother, I witnessed firsthand how he impacted countless lives as a mentor, colleague and friend. Embodying the qualities expected of a FarmHouse man, Chad led our organization with integrity, grace and humility.

In addition, Chad helped establish relationships with the Fraternity's two national philanthropies, the Leukemia-Lymphoma Society (LLS) and Be the Match: The National Bone Marrow Donor Registry, and created The Journey: FarmHouse, an international service immersion experience in Honduras. These unique experiences provide an opportunity for our members to not only give promise of service to our fellowmen and to the world but to also grow and learn about themselves.

The enduring passion is admirable

Chad's dedication, passion and his life-long commitment to FarmHouse is admirable. He is a true champion for the values of our organization not only internally with members but also externally through his volunteer engagements, industry involvement and civic activities.

During his time as our executive director, he extended the reach of FarmHouse and continues to be a true ambassador of the Fraternity.

I am honored to thank and recognize Chad for his service to FarmHouse. As a volunteer, one thing that always impressed me is the time Chad made to thank volunteers and those giving back. There was always a hand-written note or a star donated in my name thanking me for my service. Chad believes in the importance of showing gratitude to those who give back and I am honored to do the same for him as he moves on to the next step in his career.

EXCELLENCE IN EDUCATIONAL PROGRAMMING FOR OUR MEMBERS

through the creation and launch of six conferences and initiatives resulting in 40% of undergraduates participating in an in-person program of the International Fraternity, during the last biennium

- To Be and Become: Emerging Talent Retreat (launched in 2009)
- FarmHouse Leadership Institute (launched in 2012)
- FarmHouse GROWS (launched in 2014)
- The Journey: FarmHouse (launched in 2014)
- Volunteer Leadership Summit (launched in 2014)
- STAR Member Experience (launched in 2016)

RECORD UNDERGRADUATE MEMBERSHIP for nine consecutive years and overall growth in membership of 39% over the last 10 years, culminating with a new record membership of 1,733 members in fall 2016.

- Chartering seven chapters and two colonies, including the stewardship of our affiliation and merger with Alpha Tau Zeta as the Ohio State Chapter in 2010.

EVOLUTION OF THE FARMHOUSE BRAND with the launch of the new brand and comprehensive style guide at the 49th Biennial Conclave in August, including the redesign of the Fraternity's magazine, marketing and communication collateral, social media platforms and the new farmhouse.org web site.

INCREASE IN VOLUNTEER ENGAGEMENT through the creation of new task forces, committees and leadership opportunities, including:

- Regional Director program
- Volunteer Leadership Summit
- FarmHouse Friends network
- Establishment of the Barnes Award for Outstanding Interfraternalism

EMBODIMENT OF OUR PROMISE OF SERVICE to our fellowmen and to the world through his own civic and community involvement and with the adoption of the Fraternity's two national philanthropies:

- Leukemia-Lymphoma Society (LLS), in memory of John Romine (PU 05)
- Be the Match: The National Bone Marrow Donor Registry in honor of its founder, the late Bob Graves (CO 53), his wife Sherry, and the legacy of their late daughter, Laura

EXPANSION OF CHAPTER SUPPORT through the utilization of distance learning education, distribution of resources through expanded e-newsletter communication and the growth of the staff helping to improve communication with local chapter volunteers and officers through the restructuring of the content, focus and frequency of in-person chapter visits.

REVERENCE FOR THE FRATERNITY'S HISTORY and the Founders in researching, documenting and visiting the Founders' Monument Road project and the digitization of every issue of *Pearls & Rubies* in an online archive.

A COMMITMENT TO LIVING THE FARMHOUSE RITUAL through the adoption of the revised Builder of Men Affirmation in 2008 and the culmination of its implementation in providing universal resources and tools for every chapter to conduct the Ritual properly.

ORGANIZATIONAL HONORS AND RECOGNITION OF OUR EXCELLENCE

During Chad's tenure, the Fraternity was recognized with the NIC Laurel Wreath Award, two NIC Gold Medals, two NIC Chapter Awards of Distinction, one NIC Alumni Award of Distinction, three feature writing awards for *Pearls & Rubies* from the Fraternity Communications Association (FCA), and the KCSAE Associations Advance Kansas City Award.

Our Chapters

IN A WORLD where social media has condensed the way we communicate down to 180 characters or less, sometimes a photo is truly sharing more of the story than a caption ever could. These next few pages capture our chapters year in review as seen on their social media outlets.

While the faces of FarmHouse may change as the years go by, our students today are still enjoying many of the time honored traditions such as homecoming, Greek week, and intramurals vs. AGR, just as we all once did. We hope you enjoy this look through the 2016–2017 academic year.



1 @fh_okstate FarmHouse takes the win in the Alpha Chi Acts Against Violence volleyball tournament!
#alphachiactsagainstviolence
SEPTEMBER 30, 2016



2 @FarmHouse Fraternity at WSU Happy Friday! Can you believe WSU Homecoming is only a week away?
OCTOBER 7, 2016



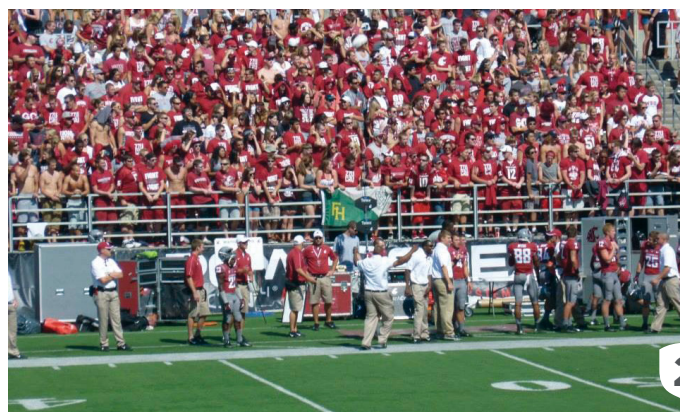
3 @mizzoufarmhouse Another great year of house decs in the books!
OCTOBER 21, 2016



4 @FarmHouse Fraternity Iowa State Chapter For those who are in the Ames area tonight, our pairing has moved onto the finals for “Yell Like Hell”! We hope to see many of you there and thank you in advance for the support!
OCTOBER 28, 2016



5 @FarmHouse Fraternity - South Dakota State Great job to the men of FarmHouse on winning the second annual FH vs AGR cup game!!!
NOVEMBER 17, 2016



Our Chapters



5



8



6



9



7



10

8



@FarmHouse Fraternity at the University of Idaho The Men of FarmHouse were feeling festive last night! We had a great time making gingerbread houses with our friends.
DECEMBER 1, 2016

9



@Tennessee FarmHouse We enjoyed helping keep Knoxville beautiful with the Knoxville Dream Center this morning. Thank you to Ross Jones and all the brothers that came out to clean up today.
DECEMBER 3, 2016

10



@FarmHouse Fraternity - University of Nevada, Reno Who knew there were so many ways to make a ginger bread house! Thanks to Kappa Phi Lambda for coming out and our wonderful alumni advisor Jerry for coming out to participate in this stellar social.
DECEMBER 5, 2016

6



@ttu_farmhouse Want to learn how to save a life? Come stop by the SUB today and tomorrow and learn how you could be a match to help those affect by leukemia and lymphoma. #bethematch
NOVEMBER 7, 2016

7



@UAlberta FarmHouse Fraternity The men at FarmHouse Alberta just wrapped up an exciting and jam packed weekend! And to wrap it all up yesterday we initiated nine incredible young men into our fraternity. We're excited about the service and excellence these new members will provide to our chapter.
NOVEMBER 27, 2016

Our Chapters

11



12



13



14



15

11



@Wisconsin-Platteville Chapter of FarmHouse Fraternity
 Congratulations to Eric Smorstad, Robert Chaffee, and Stetson Magnuson for winning brothers of the week! All three are graduating in a few days and were nominated for all the work they have done while in FarmHouse.
 DECEMBER 12, 2016

12



@FarmHouse Fraternity at the University of Illinois We wish you a Merry Christmas and Happy Holidays from the men of FarmHouse Fraternity!
 DECEMBER 25, 2016

13



@farmhouse_ksu When else do you get to go skiing and live in a cabin with 36 of your best friends besides FarmHouse ski trip?
 JANUARY 13, 2017

14



@farmhouse_ncsu Awsome time at the driving range.
#RUSHFH #farmhouse #ncsu
 JANUARY 25, 2017

Our Chapters



15



@farmhouseatz Several brothers and friends had a great time last night playing the first game with our new Broomball team! #PSMOES #RushFH #Athletics
JANUARY 30, 2017

16



@Michigan State FarmHouse Fraternity Four members attended the Regional Leadership Conference in Dayton Ohio, where they focused on developing leadership skills. They also visited the United States Air Force National Museum with other chapters that attended. #FHRLC
FEBRUARY 5, 2017

17



@farmhouse_unl It might be cold outside, but then again, it's Nacho average philanthropy ;) come eat some nachos and support Autism Speaks!
FEBRUARY 23, 2017

18



@Illinois State FarmHouse Thank you everyone for supporting our team for the 2017 Polar Plunge for Special Olympics Illinois!!!
FEBRUARY 25, 2017

19



@csufarmhouse We hope our brothers had a great time at the FarmHouse Regional Conference! Safe travels back!
FEBRUARY 26, 2017

20



@uarkfarmhouse Supporting @arkansasadpi and celebrating Pi Day by throwing pies at our very own president! #woopig #truehappiness #FHProud
FEBRUARY 27, 2016

Our Chapters



21

21



@vt_farmhouse On February 18th, brothers of FarmHouse participated in the NRV Polar Plunge for the Special Olympics. The brothers of FarmHouse raised \$1,140 for the Special Olympics. Keep up the good work!
FEBRUARY 27, 2017



22

22



@FarmHouse Fraternity at Wichita State Had a great time cheering on our Greek community! #SmallWins #WSUgreekAwards #psmoes #DressAngry
MARCH 2, 2017



23

23



@NDSU FarmHouse Fraternity As you may know the men of FarmHouse Fraternity are a handsome bunch. What you may not have known is they are vocally talented as well. These are some of the young men in the Statesmen and UCS choir. Thank you to all who came to watch the concert today.
MARCH 5, 2017



24

24



@Texas A&M FarmHouse Fraternity Had a great time at the fish fry! We want to give a big thank you to everyone that helped support Be the Match!
MARCH 5, 2017



25

25



wku_farmhouse Collin may not be able to walk tomorrow but we're still glad we got the win tonight! #PSMOES
MARCH 6, 2017

26



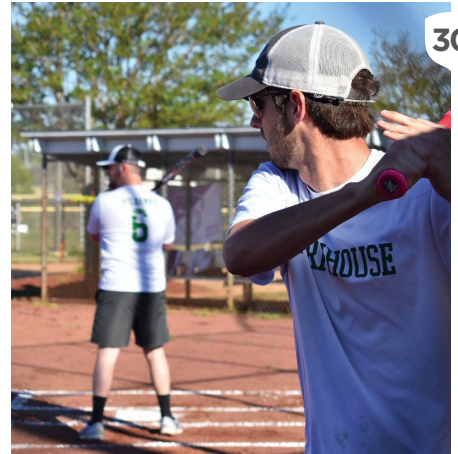
@farmhousepurdue Proud of and thinking about our brother @ethan_mcneely as he is donating bone marrow today!
MARCH 8, 2017

Our Chapters

26



30



27



27



@Minnesota FarmHouse Fraternity

Last night we played AGR in the annual basketball cup game at the Sports Pavilion. We are proud to have won 55-39! A huge thank you to everyone who came out to support us last night! The cup stays where it belongs and we look forward to everyone joining us at softball this spring.

MARCH 25, 2017

28



28



@farmhousetroy We are very proud of our brothers for sacrificing their time, pleasures, and comforts to represent our campus in the best way possible. Winning the Dean's Cup of 2016 marks a time of celebration but most importantly an opportunity to go above and beyond in the years to come. #PSMOES #FarmHouse

MARCH 26, 2017

29



29



@kyfarmhouse One of our brothers got to spend a little time on the mountain in Buenos Aires, Argentina. Pat spent two weeks touring businesses and the culture of Argentina with a group of 25 other University of Kentucky students as part of a short study abroad program.

MARCH 27, 2017

30



@msu_farmhouse Happy to have been a part of @msutridelta Swinging for St Jude! Thanks hosting such a fun event!

APRIL 1, 2017

Want to follow our chapters? You can find a full list of each chapter's website and social account at farmhouse.org/chapter-directory/

COMING AUGUST 15th

YOUR OFFICIAL ONLINE STORE FOR ALL OF YOUR

FARMHOUSE FRATERNITY GEAR!



FHGEAR.COM

Chapter Recognition

PROGRAMMING AWARDS

New Member Recruitment
Green: Iowa State
Gold: Washington State

New Member Education
Green: Nebraska
Gold: Colorado State

Total Member Education
Green: Minnesota
Gold: South Dakota State

Alumni Relations
Green: Iowa State
Gold: Ohio State

Financial Management
Green: Auburn
Gold: Washington State

Campus Involvement
Green: Iowa State
Gold: South Dakota State

PROGRAMMING AWARDS

Community Service
Green: Iowa State
Gold: South Dakota State

Risk Management
Green: Nebraska
Gold: Colorado State

Intellectual Development
Green: Minnesota
Gold: Washington State

Spiritual Development
Green: Auburn
Gold: South Dakota State

Social/Moral Development
Green: Minnesota
Gold: Washington State

Physical Development
Green: Troy
Gold: South Dakota State

AWARD OF EXCELLENCE

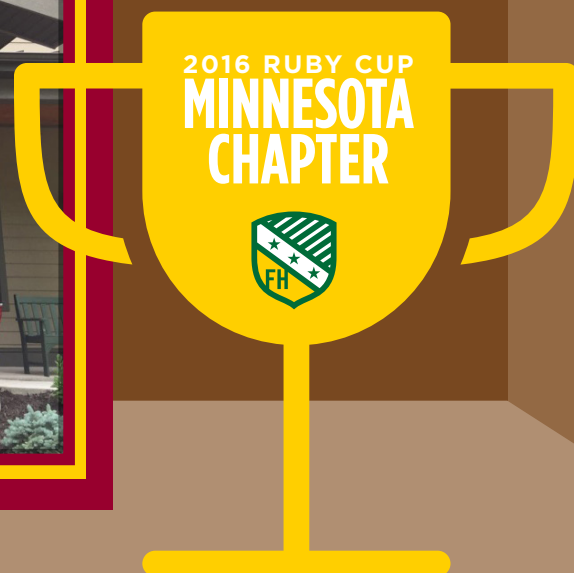
Chapters that scored 90% or above on the Award of Excellence application

Iowa State
Troy
Oklahoma State
Minnesota
Auburn
Nebraska
North Dakota State
Kansas State
South Dakota State
Mississippi State

SUMMA CUM LAUDE AWARDS

30% above the all men's average GPA

Auburn
Iowa State
Minnesota
Nebraska
Oklahoma State
Southern Illinois
Troy



MOST IMPROVED CHAPTER
Washington State

OUTSTANDING CHAPTER
Green: Iowa State

OUTSTANDING CHAPTER
Gold: South Dakota State

MEET THE

New
↙

FARMHOUSE



Christian Wiggins, CEO



Braden Wilson (CO 13)

Director of Chapter Services
and Membership Growth



Jared Horman

Director of Marketing
and Communications



Emily Cowles & H. James Spry IV (CL 13)

Membership Growth Consultants



Joshua Norling (SD 14) & Jay Watkins (VT 14)

Educational Leadership Consultants



Staffing Updates

STAFF

CHRISTIAN WIGGINS

Christian has significant experience in higher education, non-profit leadership and business operations management. Prior to joining the FarmHouse staff, Christian held multiple roles at Pi Kappa Phi Fraternity—most recently Chief Operating Officer. Before his time with his fraternity, he worked in management for Caesar's Entertainment.

He holds a MBA from the University of South Carolina and a bachelor's degree from Elon University. He has served on more than a dozen non-profit boards, including current service as board chair for Campus Pride, the Association of Fraternity/Sorority Advisors Foundation and the Coalition for Collegiate Women's Leadership.

He grew up in western N.C., but is quickly making Kansas City home. In his spare time, Christian enjoys time with friends, traveling, sports, reading, staying active in his community and studying political science.

BRADEN WILSON (CO 13)

Braden graduated from Colorado State in December 2015 with a degree in hospitality management. He calls Las Animas and Westcliffe, Colo. his hometowns, and enjoys cooking, watching movies and spending time with family and friends.

Braden is responsible for the management of the organization's educational and growth consultants and execution of the chapter services, growth and expansion strategies. He is also a key player in the expansion and program strategy for the Fraternity. Prior to this position, Braden served as an educational leadership consultant.

JARED HORMAN

Jared graduated from Missouri State in 2014 with a fine arts degree in graphic design. Before joining the FarmHouse family, he served as an assistant communication director for his fraternity, Pi Kappa Phi, headquartered in Charlotte, N.C.

In his role, Jared is responsible for *Pearls & Rubies*, the Fraternity's rebrand, all print and digital collateral and management of overall communication strategy.

A native of St. Joseph, Mo., Jared loves the outdoors and recreational activities, animals and the thriving creative Midwestern spirit of Kansas City.

H. JAMES SPRY IV (CL 13)

James graduated from Clemson University in May of 2017 with a degree in Biological Sciences. He is from Greenville, S.C. and enjoys playing tennis and basketball along with hanging out with friends.

James is one of our membership growth consultants and will work to start our associate chapters.

JOSHUA NORLING (SD 14)

Josh graduated from South Dakota State University in December 2016 with his bachelor's of science in health education. He calls Savage, Minn. his home where he enjoys playing sports, watching movies, and hanging out with his family. Josh is responsible for the delivery of educational materials to the chapters of FarmHouse and also the consultation visits that survey the chapters overall progress.

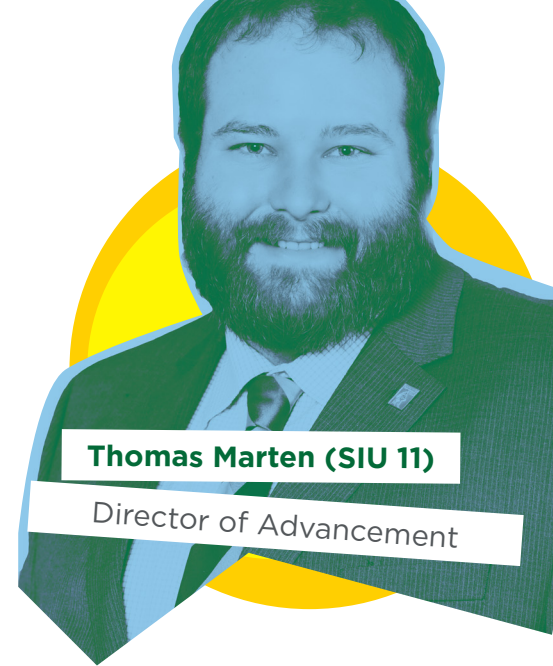
EMILY COWLES

Emily graduated from Iowa State University in May 2017 with a degree in public relations along with an event management minor. During her time at Iowa State, she was president of Iowa State Dance Marathon and is a proud member of Alpha Omicron Pi. Originally from Green Bay, Wis. she is a born and raised 'cheesehead'. She enjoys volunteering, leadership development, spending time at the lake, and cheering on both the Packers and the Cyclones. Emily is excited to assist in the efforts to bring FarmHouse Fraternity to new campuses across North America.

JAY WATKINS (VT 14)

Jay graduated from Virginia Tech in December 2016 with a Bachelor's of Science in business majoring in hospitality and tourism management. He was a member of the Corps of Cadets achieving his minor in leadership. Jay grew up in Arlington Virg. and in his free time he enjoys cooking, watching sports, being outside, and being with friends.

As an undergraduate member, Jay served as Director of Risk Management



Thomas Marten (SIU 11)

Director of Advancement

and Director of Alumni Relations. He will be serving as an educational leadership consultant.

THOMAS MARTEN (SIU 11)

Thomas is the new director of advancement for the FarmHouse Foundation. Thomas is a 2012 graduate of Southern Illinois University–Carbondale and grew up on his family's farm near Raymond, Ill. He graduated with a degree in agricultural systems with minors in plant & soil sciences and environmental studies.

Previously, he was the manager of the Stark County (Ill.) Farm Bureau, overseeing the operations of the local Farm Bureau and Foundation, coordinating and conducting programming in line with the organization's mission, advocating for farmers legislatively, working to improve agricultural literacy and is credited for growing and improving the county Farm Bureau's Foundation.

Thomas is a founding member of the Southern Illinois FarmHouse Chapter, helping to establish the colony in 2011. Since 2014, he has served as a Fraternity Regional Director, a volunteer role appointed by the IEB, connecting with Midwest and Canadian FarmHouse chapters and association officers to provide regional support and mentoring.

Several staff members also departed from the headquarters this spring, including Justin Crowley (MN 09), Dustin Page, and Kyle Dupper (VT 12). We also say farewell to Chad Harris (IA 98) after 10 years as the executive director (pg 8-9) and Bob Off, Master Builder (CO 64). Turn to the following page to read some highlights of Off's contributions to FarmHouse. *



1964

Initiates into FARMHOUSE Fraternity at Colorado State University (CSU).



1965

Graduates from CSU with a bachelor's in English literature

1967

Graduates from CSU with a master's in English literature.



1967

Starts working at South Dakota State (SDSU) as an assistant director of housing



1968-71

Stations in South Korea with the U.S. Army



1971

Returns to SDSU and accepts the role of chapter advisor



1997

First full time executive director for the Foundation



1995

establishes the annual Ruby Cup



1994

FH decides to allow expansion to universities without Ag departments



1994

FH Joins FRMT, the interfraternal insurance group



1993

International Head Quarters moves to Kansas City



1998

FARMHOUSE receives the NIC Laurel Wreath for leading the path in alcohol free housing



2005

End of the first Foundation capital campaign raising \$4.8 m



2006

FEA Distinguished Service Award



2006

CFEA (today the Fraternity Communications Association) Evin C. Varner Award



2007

NIC Foundation William D. Jenkins Award



2016

NIC Gold Medal



1973

Becomes the third full-time executive director for the Fraternity and Foundation, and editor of *Pearls & Rubies*



1974

Conclave passes the first bylaws affirming our alcohol free housing stance



1974

Returns FarmHouse to National Interfraternity Conference membership status



1974

Alberta expansion makes FarmHouse an International Fraternity



1979-80

College Fraternity Editors Association President



1985

helps start Ceres women's ag fraternity



1985-94

Serves as Ceres executive director



1993

First President's Leadership Conference



1992

NIC Laurel Wreath recipient



1990

Master Builder conferred



1989

Joins FIPG, the interfraternal insurance group



1988-89

Fraternity Executives Association President



2017

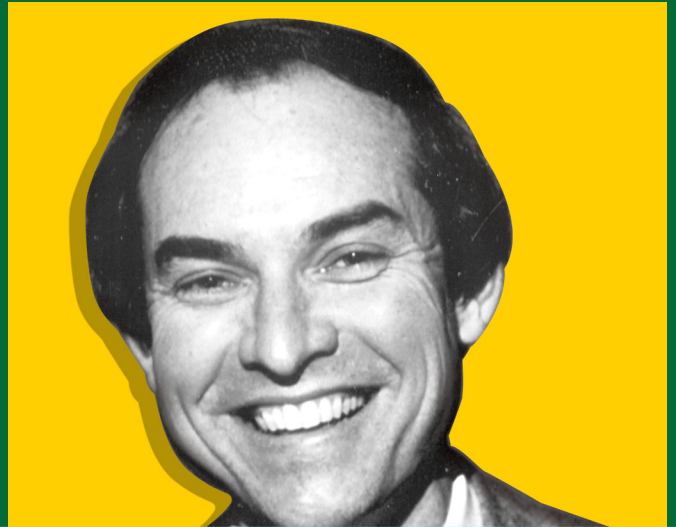
Live. Learn. Lead. Campaign concludes; Bob retires

A LIFE OF SERVICE. Bob Off's FarmHouse legacy has spanned decades—decades that saw numerous men initiated, 23 chapters chartered and significant growth for both the Fraternity and Foundation. This timeline is just a few highlights of his lasting impact on our Fraternity. *

a timeline of

MR.

FARMHOUSE



Fraternity Executive Director

Foundation Executive Director

Leadership Spotlight

Martin Augustine (IA 89)

BROADCAST JOURNALIST, KMBC-TV KC

A MAN OF MANY TALENTS, Martin Augustine's face is a recognizable part of the Kansas City, Mo. community. Augustine built skills for success in FH and in Iowa State's Greek Community.

He married his wife, Lisa, 17 years ago (18 in September) and together they are raising two sons; Andrew, 13, and Seth, 9.

You may recognize his voice as well, he has narrated the Master Builder videos the last few years. *Pearls & Rubies* recently asked Augustine about his fraternal experience, the concept of leadership and advice for members.

“Meet people.



Leadership Spotlight



What is your current profession?

I am a broadcast journalist working for KMBC-TV in Kansas City, MO. I began reporting there in January of 1998. Prior to that I worked for 7 years at KCCI-TV in Des Moines, Iowa.

What prior career opportunities helped you attain your current role?

I have always wanted to be a reporter—at least after my dream of professional baseball began to fade in junior high when I couldn't catch up to fastballs. In high school, I was a radio DJ in Washington, Iowa, and worked in radio and television news in Ames while at Iowa State. KCCI took a chance on me part-time and I've been in the business ever since.

What do you enjoy most about your career and professional work?

Each day starts from scratch and you never know what will happen or who you will meet. Sure, there are days more exciting than others, but the possibility is always there that you will find yourself in the middle of something you've never seen, heard or experienced ever before. There are peaks and valleys, tragedies and triumphs, frustrations and breakthroughs in this business—but that's exactly what the people you are covering are dealing with, too.

Share a stand out moment you had as a chapter member.

We won the Ruby Cup the summer after I graduated. I was very proud of that because I knew the work my brothers did on top of school and extracurriculars, to make that happen. I always loved how we celebrated major accomplishments of our brothers—big scholarships won, jobs earned, and, gasp, social progress!

But it was in the midst of tragedy where I felt closest to my brothers. One of our members died suddenly while on a ROTC run—and the way we coped together and grieved together truly drew us together. Most of us at the time had barely ever had death touch someone close to us. The experience, while awful, did focus us on what's important in life—namely caring for each other in a meaningful way.

What did you learn from those experiences that had “staying power” with you?

Tenacity. The FarmHouse men around me were achievers. They set goals. Then they laid out a plan to achieve those goals. When bumps in the road derailed a plan, they found a way around and through the challenge to continue pursuing a goal. That's still how I operate today.

What are essential skills you believe students need today to be successful in their career?

Students need to be genuine and engaging with other people, which is something I worry about in our increasingly digital world. Meet people. Learn about people. Do it face to face. Be tenacious about your pursuits and be willing to risk failure—you have to learn how to get back up when life knocks you on your butt. I can't guarantee much, but I can guarantee that!

What do you know now that you wish you'd known at a younger age?

I was too risk-averse as a young man—and when my professional life kicked my butt early on I wasn't quite as prepared for that. I would tell the young Martin to jump in to things without worrying if you're qualified to jump in to those things or not!

Do you have a favorite quote about leadership or personal development that resonates with you?

It's a simple quote from a neighbor of mine when I was growing up. He was a WWII veteran of D-Day. When it got really tough, and the other soldier driving the Jeep asked him what they should do, my old neighbor said, “Drive on.” I you think about it, that applies to damn near every challenge we face.

Learn about people. Do it face to face. Be tenacious about your pursuits and be willing to risk failure—you have to learn how to get back up when life knocks you on your butt.”

How did you come to first know about FarmHouse?

My father and maternal grandfather are Iowa State FarmHousers, so the FH values and experience have always been a part of my life. Several graduates of my high school are FarmHousers, too, so there was a bit of a pipeline to 311 Ash.

What about the FarmHouse experience spoke to you?

When I was being recruited to FarmHouse, those brothers always struck me as wonderfully smart and engaging. They all seemed to have a view of the world beyond Ames or Iowa. I was very impressed with them and wanted to be a part of the standard they seemed to set for themselves and on the campus of Iowa State.

What leadership skills did you attain that you are able to attribute to FH?

The leadership factor I took away was the power of listening. If we were to achieve anything as a fraternity, you had to bring a lot of different opinions together. Not every opinion wins, but you had to truly listen and understand a lot of points of view. If you weren't listening, your disinterest dishonors the opinion of your brother. So whether you say, yes, let's do this or no, let's not do this, if you gave a fair hearing to everyone, you have demonstrated terrific leadership.

What are two or three books that were impactful to you that you would recommend others read?

Oh, boy. Books are hard for me to start and finish with my schedule. If you can't find inspiration in a book called “Winston Churchill, His Wit and Wisdom,” then I don't know how to help you! *

It's not too late!
Register online at farmhouse.org

AUGUST 18-20, 2017
NATIONAL 4-H CENTER
WASHINGTON, D.C.

VOLUNTEER LEADERSHIP SUMMIT

MEET A FEW OF THE PRESENTERS



Greg Melia (HON 16), Vice President of Program Development for Industry News with ITN Productions



Patrick Alderdice, President and CEO of Pennington & Co.



Bobbi Larsen, Education Consultant of Holmes-Murphy Insurance's Fraternal Division



Judson Horras, President and CEO of the North-American Interfraternity Conference

Volunteer Leadership Summit

BEHIND THE SCENES of every FarmHouse chapter is a dedicated corps of volunteers that give of their time, pleasures and comforts to help elevate our undergraduate men.

Over 300 men and women support FarmHouse as advisors and association officers. They see the bigger picture and realize the importance of investing in young leaders.

FarmHouse launched the Volunteer Leadership Summit (VLS) to give our volunteers the tools they need to be effective builders of men. This biennial program has already shown its value.

Frank Bezdicek (MN 67) said, "It was the

Pennington & Co.; Bobbi Larsen, Education Consultant of Holmes-Murphy Insurance's Fraternal Division; and thought leader Greg Melia (HON 16).

In addition to valuable workshops, educational sessions and networking, attendees will enjoy an evening guided tour of the National Mall.

Who should attend

The curriculum and content of VLS is best suited for those who are new in their volunteer role (first or second year advisors) or assuming a leadership role in the near future, such as an incoming officer of an association.

"It was the most informative Fraternity conference that I have ever attended. I had little knowledge how much had changed

most informative Fraternity conference that I have ever attended. Although a Minnesota FH advisor twenty years ago and again today, I had little knowledge how much had changed with students and on campus that now needed to be addressed to be an effective advisor. The Summit accomplished that."

Using our nation's capital as a backdrop, the Summit will cover topics like: the future of fraternity, the future of public higher education, coverage and exposure in insurance, trends in chapter housing, finances, FarmHouse policies, the FarmHouse brand, recruitment and being a role model and mentor to undergraduate FarmHouse men.

The best way to be set up for success is to learn from other leaders. That is what makes VLS so exciting—learning from great fraternal leaders. Held August 18–20, 2017 at the National 4-H Conference Center in Chevy Chase, Md., the Summit will provide attendees with training to support continuity, consistency and long-term sustainability on their campus.

Presenters include fraternal experts Judson Horras, President and CEO of the North-American Interfraternity Council; Patrick Alderdice, President and CEO of

with students and on campus that now needed to be addressed to be an effective advisor.

The Summit accomplished that."

Registration

We invite one chapter advisor and one association board director from each FarmHouse campus to attend. Any volunteer can attend including faculty or campus-based advisors who are not members of FarmHouse.

Registration is \$150 per attendee and includes two-nights shared lodging (Friday & Saturday), a welcome reception, two breakfasts and one lunch.

Attendees cover the cost and coordination of their travel to DC as well as other meals.*

SCHEDULE

AUGUST 18

Registration Open at 5:00

Welcome, Opening Rite, introductions and State of FarmHouse

"The Future of Fraternity"
Jud Horras

Welcome Reception

AUGUST 19

Breakfast

Chapter Advisors Breakout /Association Officers Breakout

Lunch

Chapter Advisors Breakout /Association Officers Breakout

"The Campus Climate"
Higher Education Professional Panel

Dinner on your own and time to explore the city

Evening Monument Tour

AUGUST 20

Breakfast

"Putting Knowledge to Action" *Greg Melia*

Closing Rite and Adjournment by 11:00 am

live.
learn. **lead!**
THE CAMPAIGN FOR FARMHOUSE



6 YEARS

The Foundation recognized record fundraising years during the six years of the Campaign.

\$23.6
MILLION RAISED

Surpassed the \$20 million Campaign goal six months prior to its conclusion.

5,009
DONORS

This includes FarmHouse alumni, undergraduates, friends and parents.

20,785
GIFTS

Many donors made multiple gifts to the Foundation during the Campaign.

1,094
GRANTS

Grants made to the Fraternity and chapters for housing, scholarship, and leadership training.

\$11
MILLION

Amount granted during the Campaign. Educational grants have tripled in the last decade.

Celebrating THE Campaign!

Unprecedented Levels of Generosity

The Foundation received two of its largest estate gifts, its first \$1 million cash gift and four donors made or pledged \$1 million gifts to the Foundation during the campaign.

Growth in Assets

Total assets of the Foundation grew from \$7.2 million to \$17.5 million when the Campaign concluded.

Funding in Perpetuity

46 new endowment funds, totaling \$5.3 million, were established, providing funding in perpetuity for educational and leadership programs, scholarships and chapter housing opportunities.

New Giving Societies

Two new giving societies were created to recognize donors, the Order of the Crest (\$250,000–\$499,999) and Cornerstone Society (\$500,000 or more).

Increased Funding of Operations

The Chairman's Club was created to celebrate those who provide the strongest support for the Annual Fund—as a result, doubling the number of people donating \$700 or more annually.

100 Legacies in the Making

48 alumni added their names to the 100 Legacies in the Making Campaign, bringing the total to 64 individuals pledging over \$4.11 million in estate gift pledges.

Recognition

The Foundation received five North-American Interfraternity Conference Foundation (NICF) "Awards of Distinction" and the Association of Fundraising Professionals Mid-America Chapter's "Excellence in Fundraising" Award.

Foundation Staff Growth

To support the progress of the Foundation, two new staff members were added to the Foundation—Stewardship Coordinator and Director of Advancement.

New Headquarters Space

The Fraternity and Foundation significantly expanded the headquarters office by moving to a new custom-built space in February 2016.

Live. Learn. Lead. Campaign



\$9 million granted to 17 chapters for the educational portions of new housing construction and renovations. Seven chapters broke ground on their projects during the Campaign.

\$2.3 million loaned to 3 chapters through the new Chapter Housing Loan Program created during the Campaign.

\$192,000 granted to 13 chapters for technology. One chapter built a new state-of-the-art technology center in their house in memory of an alumnus.

“Our new house allows us to expand. It’s exciting for us to envision the future that this house will provide our chapter.”
Tyler Swan (SD 13)



\$375,000 granted to 540 young men for academic and study abroad scholarships. The increased support has nearly doubled the amount of scholarships awarded annually.

International Catalyst Fund
The largest fund for international travel in the Foundation’s history was established.

15 new scholarship endowment funds were established during the Campaign, providing scholarships for young men in perpetuity.

“Thank you for the scholarship that helped make my trip possible. After the trip, I decided that I do want to go to vet school.”
Jacob Wessels (IL 16)



\$961,000 granted for leadership training and educational opportunities, expanding support of the Fraternity’s existing programs and helping to launch new initiatives.

3 new Fraternity programs launched The Journey, FarmHouse GROWS and the Volunteer Leadership Summit were made possible thanks to the support of Campaign donors.



“Being in FarmHouse has given me the opportunity to be part of something bigger than myself. Having leadership roles within my chapter has taught me more than I could have ever imagined. I’ve gained valuable insight into what it means to be a Builder of Men.”
Chase Bridges (SIU 15)

YOU MADE THIS AND MORE POSSIBLE.

Foundation Donors

53 Alumni Join Top Honor Roll Clubs



Jerry Adams William Adams Scott Armbrust Alan Barkema



Steve Berger Brent Bible Duane Binder Wilbur Bluhm



Kenneth Bolen Don Buhl Jeff Davis Paul DeBriyn



Kenneth Emde Larry Hammond Jim Hendrix Bob Knief



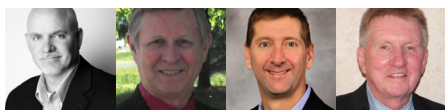
Kent Lucken Ron Marlow John Miller Larry Miller



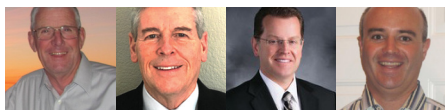
Jeff Muchow Bill Northey Rob Rainey Gary Roewe



Hugo Rogers Paul Rohlfing Lee Sandager Marvin Schrader



Bret Sheffield Del Stork Lee Thurber Tom Wenstrand



Gerry Wirth John Wirth Larry Witzel Duane Wolf



Gregory Zabka

THE FARMHOUSE Foundation welcomed 53 new members into its highest giving societies between Oct. 12, 2016 and July 1, 2017.

CENTURY CLUB

Accumulative gifts of \$100,000 to \$249,999

Paul DeBriyn (MN 75) is retired CEO and president of AgStar Financial Services, a part of the Farm Credit System. He retired in 2015 after 38 years in the Farm Credit System. He and his wife, Lori, live in Estero, Fla.

Gary Roewe (IA 65) is a retired senior finance manager for DuPont Pioneer. He works with his brother, Dale (IA 77), on the family farm during planting and harvest. He is also a published songwriter. He and his wife, Susan, live in Davenport, Iowa.

DOANE CLUB

Accumulative gifts of \$50,000 to \$99,999

Scott Armbrust (IA 70) is a veterinarian at Paradocs Embryo Transfer. He and his wife, Nancy, live in Green Bay, Wis.

Brent Bible (PU 93) owns and operates a farm for commercial seed corn and soybeans, seed wheat and vegetable production. He served four years on the International Executive Board, including a term as president. He is a Foundation Trustee. He and his wife, Stacy, live in Lafayette, Ind.

Donald Buhl (MN 69) owns Buhl's Ridge View Farm, specializing in corn, hogs and soybeans. He and his wife, Susan, live in Tyler, Minn.

Jeffrey Muchow (SD 66) is president of Food Systems Associates, which focuses on business startups, mergers and turnaround situations for food processing enterprises. He was a Foundation Trustee for six years. His son, Austin (KS 11) is a member of FarmHouse. He and his wife, Mary Jane, live in Overland Park, Kan.

Lee Sandager (MN 46) is retired from a lifelong career in agricultural education and international agricultural development, in which he worked in 24 countries. After retiring, he advised agricultural private enterprise development in Africa and Eastern Europe. His sons, Daniel (MN 71),

Richard (MN 78) and Erik (MN 80) and grandsons, Mark (SD 08) and Peter (SD 09) are FH members. He and his wife, Betty, live in Marine on Saint Croix, Minn.

Lee Thurber (NE 91) is an ophthalmologist at Ophthalmology Associates. He was a Foundation Trustee for six years, concluding his term in November 2016. He and his wife, Heidi, live in Lincoln, Neb.

H.K. Wilson Club

Accumulative gifts of \$25,000 to \$49,999

Mark Anderson (IA 70) is founder and owner of Mark Anderson and Associates, Inc. (MAI) Animal Health, multi-faceted manufacturers and brands that service the animal health industry. He and his wife, Beverly, live in Spring Valley, Wis.

Phillip Farris (PU 53) is the retired president of First National Bank. He and his wife, Donna, live in Loudon, Tenn.

James Hendrix (CO 72) is the founder and president of Progressive Agricultural Management, LLC, producing light red kidney beans, popcorn and organic alfalfa. He is a Foundation Trustee. He and his wife, Twila, live in Wray, Colo.

Wilbert Kern (MN 48) is a retired farmer for Grandview Farms. He resides in Rochester, Minn.

Robert Knief (IL 89) is president of Bartlett Grain Company, a grain merchandising company operating principally in the United States and Mexico. He is chairman-elect of the FarmHouse Foundation. He and his wife, Annette, live in Kansas City, Mo.

John Konkle (PU 74) is senior vice president and chief credit officer for Bankers Bank. He and his wife, Linda, live in Carmel, Ind.

Blair Kotkowski (OH 75) is president of Kotkowski Farms, a dairy farm operation. He also works for the U.S. Postal Service. He and his wife, Karen, live in Mantua, Ohio.

Kent Lucken (IA 83) is managing director of Citigroup in Boston. He and his wife, Kristen, live in Newton, Mass.

Ronald Marlow (NC 68) is retired associate deputy chief for science and technology for the U.S. Department of Agriculture, Natural Resources

Foundation Donors

Conservation Service. He and his wife, Ann, live in Washington, D.C.

Dan Moore (SD 93) is owner and CEO of Moore Grain and Windfinity, LLC. His operation includes corn, soybeans, hay and wind energy in Blue Earth, Minn.

Gerald Wirth (NE 68) is a retired farmer. He is a fifth generation farmer and formed Wirth Farms, a farming and ranching business with his brother, Jim (NE 70). His brothers, John (NE 66), Jim (NE 70) and Don (NE 76), are also members of FarmHouse. He and his wife, Susie live in Nebraska City, Neb.

Larry Witzel (IA 85) is president of Strategic Financial Solutions. His son, Nate (IA 11), is also a member of FarmHouse. He and his wife, Joni, live in Marion, Iowa.

1905 Club

Accumulative gifts of \$10,000 to \$24,999

Jerry Adams (NE 68) is CEO of Adams Land & Cattle, LLC, a premier beef feedlot operation. He and his wife, Linda, live in Broken Bow, Neb.

William Adams (NE 69) is chairman of the board for Adams Land & Cattle, a premier beef feedlot operation. He and his wife, Connie, live in Broken Bow, Neb.

Alan Barkema (IA 70) is an economist for Apical Economics, LLC. He is also the retired senior vice president of the Federal Reserve Bank of Kansas City. Alan and his wife, Judi, live in Shawnee Mission, Kan.

Steven Berger (IA 83) is a farmer and has a hog finishing operation. He and his wife, Julie, live in Wellman, Iowa.

Duane Binder (MN 86) is a software engineer for Symantec Corp. He and his wife, Deborah, live in Lakeville, Minn.

Wilbur Bluhm (NE 46) is retired professor emeritus and chair of extension horticulture for Oregon State University. He was president of the Oregon FH Association for two years. He lives in Keizer, Ore.

Kenneth Bolen (IL 61) is retired dean and director of the University of Nebraska Cooperative Extension. He and his wife, Mary, own and operate Hickory Hill Farm in Thompsonville, Ill.

Jeffrey Davis (SD 78) is president and CEO of Bryant State Bank and a partner in his family's farm and ranch operation.

He is past president of the South Dakota State FarmHouse Association, during the chapter's recent housing campaign. Two of his sons, Robert (SD 00) and Stephen (SD 10), are members of FarmHouse. He and his wife, Paula, live in Brookings, S.D.

Kevin Dykstra (SD 76) owns Praise Him Financial Services, LLC. His son, Daniel (KS 04) is a member of FarmHouse. He and his wife, Anne, live in Decorah, Iowa.

Kenneth Emde (MN 69) is a senior lending officer for AgriBank, FCB. He and his wife, Barbara, live in St. Paul, Minn.

Kenneth Fawcett (IA 68) is president of Fawcett Farms, Inc. His son, Thomas (IA 01), is a FH alumnus. He and his wife, Helen, live in West Branch, Iowa.

Stanley Ferris (NE 67) is the owner of Ferris Farms, Inc., a hog farm in Central City, Neb., where he and his wife, Gail, live.

Troy Fuchser (NE 57) is a former engineering fellow for Raytheon. He and his wife, Rebecca, live in Tucson, Ariz.

Larry Hammond (NE 61) is retired from Stirling Associates, specializing in regulatory affairs. He lives in Carmel, Ind.

John Kreuzer (NE 77) is a loan officer for First State Bank. He and his wife, Kristi, live in Gothenburg, Neb.

John Miller (MN 71) owns Freeborn Lumber Company. He and his wife, Cynthia, live in Janesville, Minn.

Larry Miller (NE 83) is chief operating officer at Phibro Animal Health Corporation. He was a key part of the management team that launched the Phibro I.P.O. (NASDAQ PAHC). He and his wife, Nancy, live in Warren, N.J.

Ronald Morse (NE 59) is retired from Huntsman Corporation, a global manufacturer and marketer of differentiated chemicals. He and his wife, Karen, live in Indianapolis, Ind.

Bill Northey (IA 79) is Secretary of Agriculture for the State of Iowa. He is a fourth-generation farmer and grows corn and soybeans. He and his wife, Cindy, live in Urbandale, Iowa.

Rob Rainey (OK 80) is managing partner of Rainey Law, LLP. He also serves as vice president and counsel for Performance Dashboard, a strategic planning consulting firm. He is a Foundation Trustee. He and his wife, Carilyn, live in Edmond, Okla.

Paul Rohlfsing (NE 83) is senior director of global regulatory affairs for the

chemistry, manufacturing and controls division of Pfizer, supporting vaccines and biotherapeutics. He and his wife, Gail, live in Greensboro, N.C.

Marvin Schrader (MN 56) is a retired pilot for Western and Delta Airlines. He and his wife, Sara, live in Faribault, Minn.

Bret Sheffield (NE 88) is vice president of development services for VanTrust Real Estate, LLC. He and his wife, Nicole, live in Olathe, Kan.

Robert Sindt (NE 69) is an attorney specializing in agricultural law. He lives in Fulton, Md.

John Spady (NE 86) owns Spady Systems Corporation, a software development and consulting company. He specializes in business intelligence and reporting systems. He lives in Omaha, Neb.

Delyn Stork (NE 66) is president and CEO of Bestorq Inc., a rubber manufacturing company. He and his wife, Roxie, live in Lincoln, Neb.

James Turner (MN 74) is a sales representative for Dow Agrosociences. He lives in Waunakee, Wisc.

Thomas Wenstrand (IA 67) owns Hawkeye Steel Products, Inc., which manufactures animal watering and feeding equipment as well as manufacturing fabric buildings. He and his wife, Karen, live in Mount Pleasant, Iowa.

Gerald Wilson (AR 62) is a retired sales manager for BASF Corporation. He and his wife, Sandy, live in Germantown, Tenn.

John Wirth (NE 66) is a retired lawyer. He had a private practice in Lincoln, Neb., and worked for Nelson & Harding law firm in Denver, Colo. His brothers Gerry (NE 68), Jim (NE 70) and Don (NE 76) are FH members. He and his wife, Sherri, live in Littleton, Colo.

Duane Wolf (IA 89) is president and owner of Duane A. Wolf Engineering, P.C. He is a mechanical engineer whose firm provides services to insurance companies and law firms throughout the Midwest for fire and explosion protection. He and his wife, Megan, live in Ames, Iowa.

Gregory Zabka (NE 70) owns Zabka Funeral Home. He and his wife, Dixie, live in Seward, Neb. *

The Lasting Influence of the Power of 7 Seminar

During *Live. Learn. Lead.—The Campaign for FarmHouse*, the Power of 7 Seminar has grown thanks to the impact it makes on alumni, spouses and undergraduates.



2017 Power of 7 Seminar attendees in Chicago

THE POWER OF 7 SEMINAR, that's completed its 11th year, continues to build relationships, change lives and impact FarmHouse men of different generations. The "power" of this Seminar is the lasting effect it leaves on alumni, spouses and undergraduates long after they depart. To some, it is the insight offered on relevant topics in business and industry that stays with them and draws them back year after year.

Signe Ferguson is a self-proclaimed "FarmHouse Groupie" when it comes to the Power of 7 Seminar, since she and her husband, Don (KS 63), first attended in 2007.

"At the first Power of 7 Seminar in Keystone, Don suggested that I might enjoy joining him for breakfast. After breakfast, I was curious, so I sat in on the morning's roundtable," she said.

She continued, "These were men with fascinating careers, captivating histories and intriguing stories. I was definitely hooked after that first Power of 7 Seminar!"

They were so hooked that, including this year's Seminar in April, they have attended nine out of 11 Seminars.

To Signe the appeal of the Seminar is both in the insights offered by alumni and

the chance to mentor the undergraduates.

"With each successive gathering, not only did my fascination with the diversity of the men grow, but also the insights and perspectives of 'the world' they offered," she said.

She added, "And maintaining contact with some of the student participants has been particularly rewarding to see how their careers have progressed, to hear about another generation's insights and to see their personal lives grow."

The Fergusons have maintained contact with several of their mentees and even hosted one or two at their homes in Chicago and Silverthorne, Colo.

Eventually, her role as listener expanded as the spouses were asked to share their thoughts during a special session of the Seminar.

"Over the years, the Sunday morning spouses' advice hour has become a fixture and the feeling of an ever-expanding family is ingrained," she said.

"This Seminar brings together a lively, unique, talented and multi-generation group of people that come together for a powerful weekend, which means I will always be a FarmHouse Groupie."

For Jerry (KS 59) and Pam Gardner,

the Power of 7 Seminar is about the relationships they develop.

It began six years ago when they received an invitation to attend the Power of 7 Seminar in Coeur d'Alene, Idaho. They decided to attend that year, and attended five years in a row.

"I have never regretted hounding Jerry to take me to the Seminars, and I have told him many times that I would attend with or without him," Pam said.

Jerry added, "We have been honored and privileged to have sponsored five different young men. We have appreciated the character and strength of my young brothers."

"It has also been an honor to meet and get to know Jerry's FarmHouse brothers from all parts of the United States and to meet and share tales with their wives, who are beautiful, smart and witty," Pam said.

The Power of 7 Seminar attendees have become an extended family for the Gardners.

"There are no words to express the gratitude we feel to have become a part of a larger family of FarmHouse brothers and their wives," Pam said.

Jerry agrees with that very much, "It has been fun to reacquaint friendships



with Signe and Don Ferguson (KS 63)



Kurt Liebnecht (CO 13) with Pam and Jerry Gardner (KS 59)

with my fraternity brothers while sharing knowledge and expertise with our younger brothers. We always feel we gain far more than we have given.”

The Power of 7 experience has continued beyond the weekend that Kurt Liebnecht (CO 13) spent in San Antonio, Texas in 2014.

His mentors, Jerry and Pam have taken a special place in his life.

“I loved my grandparents very much, and I see many qualities Jerry and Pam share with them. I am grateful for their advice, friendship and hospitality,” Kurt said.

And he means hospitality very literally. In July 2016, Jerry and Pam invited Kurt to their farm in Walla Walla, Wash., to help with wheat harvest.

“As usually happens in agriculture, things didn’t go quite as planned. Over those nine days, there were some challenges and setbacks, including the most rain they had gotten in that area in over 40 years at harvest time,” Kurt said.

He continued, “However, I was able to tour the beautiful Walla Walla area, learn about many different types of agriculture from Jerry and Pam, and I left at least 10 pounds heavier thanks to Pam’s scrumptious meals!”

Similar to the Power of 7 Seminar, this trip was a unique experience that taught him about a different part of the country, new types of agriculture and deepened his connection with a FarmHouse brother.

“The Power of 7 Seminar taught me a great many things and also left quite a few impressions, but most of all it helped me understand that FarmHouse is truly for life,” Kurt said.

He added, “My relationship with Jerry has taught me that when a FarmHouse man calls you brother, he truly means it.”

While the lasting impact of the Seminar varies from person to person, the difference it makes is undeniable.

“Without hesitation, this Seminar has

prepared me for my future career just as much as my work experience. It put what I know and what I am passionate about into perspective, and it gave me a path forward to apply my skills to my interests-and to do it successfully,” said Russell Jones (IA 14) about his experience at the Power of 7 Seminar in Chicago, April 21–23, 2017.

The 11th Annual Power of 7 Seminar gathered alumni, spouses and 11 undergraduate leaders for a weekend of learning, brotherhood and fellowship, which began with dinner and the first Clayton Yeutter (NE 49) + Lecture: Lessons in Leadership by Rick Berg (ND 78), Master Builder.

Rick shared his experiences in the United States Congress, as past House Majority Leader for the State of North Dakota, as a real estate developer and in FarmHouse.

On Saturday, roundtable discussions on topics of production agriculture, agribusiness and food security, entrepreneurship and investing were led by questions from the undergraduate attendees.

Attendees deliberated about many national and world challenges, as well as opportunities they face in their professional and personal lives. The night ended with a special thank you dinner cruise on Lake Michigan.

The Seminar concluded Sunday morning with advice, lessons and reflections from the undergraduates, alumni and spouses in attendance. *

A very special thank you to the Second 7 Founders who helped make the 2017 weekend possible:

Rick Berg (ND 78),
Mike Fayhee (IL 67),
Don Ferguson (KS 63),
Jim Hendrix (CO 72),
Jim Herbert (TN 61),
Kent Horsager (MN 81),
Bob Knief (IL 89),
Dick Kruse (KS 63),
Noel Stuckman (PU 54),
Jim Tobin (IA 76), and
Jeff Topp (ND 79).

Also, thank you to Steve Davis (OK 77), Jim Fitterling (MO 80), Doug Sims (IL 65) who generously made Annual Fund gifts in support of the Power of 7 Seminar, but were unable to attend.

The undergraduates who participated in the Seminar included:

Joshua Christoffer (MN 15),
Brandon Douglas (AL 13),
Greg Jaggears (VT 14),
Russell Jones (IA 14),
Landon Lindemer (OH 15),
Shane Mueller (SD 15),
Alex Nielsen (ND 14),
Wilson Ogg (CO 15),
Dylan Rodriguez (MI 16),
James Spry (CL 13) and
Grant Suess (SIU 15).

INTERESTED IN ATTENDING IN 2018?

SAVE THE DATE—THE 12TH ANNUAL POWER OF 7 SEMINAR WILL BE HELD IN APRIL 2018.

2018

Alumni who make an Annual Fund gift of \$7,000 or more during the 2017-18 fiscal year are invited to attend this memorable and impactful Seminar and have the opportunity to mentor one of FarmHouse’s top undergraduates during the weekend.

To learn more about the Power of 7 Seminar, visit: farmhouse.org/foundation/powerof7.

Reinvesting Your IRA in FarmHouse

BY BOB OFF (CO 64)

AN INDIVIDUAL RETIREMENT ACCOUNT (IRA) can be the basis for several ways to make a gift to FarmHouse and do so with significant tax benefits.

Making a gift to charity from an Individual Retirement Account (IRA) has finally been made permanent! After renewing charitable IRA legislation for a year or a few years at a time, or even retroactively, in 2015 Congress passed and President Obama signed into law the IRA Charitable Rollover provision making it permanent. This year, and each year hereafter, you can make tax-exempt gifts to the FarmHouse Foundation from an IRA.

You may donate IRA funds this way if:

- You are 70 or older;
- You have the funds transferred directly from an IRA to a public charity, a 501(c)3, such as the FarmHouse Foundation
- You direct your fund administrator to assure that the gift is received by the Foundation before December 31st each year;
- The gift is \$100,000 or less each year. If your spouse has an IRA and is 70 or older, they can also donate up to \$100,000.

The transfer does not generate taxable income or a tax deduction, so you can benefit even if you don't itemize your tax deductions.

In addition, a gift from an IRA can count towards all or part of your required minimum distribution (RMD).

It is an easy way to benefit the FarmHouse Foundation, and/or through the Foundation to provide funds for chapter-specific leadership training, scholarships, chapter housing capital campaigns and any other educational programs and projects made possible by the Foundation.

Further, if you have been thinking about establishing an endowment fund with the FarmHouse Foundation, now that the IRA Charitable Rollover is permanent this may be more doable than you thought. The threshold to establish an endowment with the Foundation is \$10,000 and you can take up to five years to achieve that level.

How to make a gift from your IRA:

If you are 70+, you will need to contact the administrator for your IRA and request that a check be sent from your account directly to The FarmHouse Foundation, 7306 NW Tiffany Springs Parkway, Suite 310, Kansas City, MO 64153. The administrator will want to know the

Foundation's Federal ID: 36-6111880.

If you would like, the Foundation can provide you with a sample letter to use when contacting your IRA administrator.

Build a Legacy with FarmHouse:

Also, since we are talking about utilizing an IRA to continue *Building the Leaders of Tomorrow*, I would also lay on your mind making provision in your will or estate plan for a bequest from your IRA. Because your IRA has not yet been subject to income tax, as much as 75% of retirement savings can go to pay taxes without some estate planning. Your estate can save both income and estate taxes if you make The FarmHouse Foundation a beneficiary of an IRA, pension fund, 401(k), or other retirement savings.

When you started an IRA years ago, you were investing in the future. When you make a gift to the FarmHouse Foundation from an IRA, you are investing in the future once again.

If you have questions or would like more information about donating to the Foundation, you can contact Allison Rickels, Executive Director, The FarmHouse Foundation, at Allison@Farmhouse.org or 816.891.9445. *

100 Legacies in the Making Campaign Donors (as of 7/1/2017)

James Congrove (KS '58)
 Tarry Edington (MI '61)
 Ward Edwards (IL '32) †
 Jim Fitterling (MO '80)
 Roy Frederick (NE '63)
 Darrell Godfrey (IA '73)
 Larry Hageman (OH '78)
 James Herbert (TN '61)
 Michael Holmberg (MN '68)
 Merle Hunt (IA '42) †
 Terry Jaspers (SD '74)
 Milton (MN '53) & Pauline Jellum
 Kirby (ND '76) & Donalee Josephson
 Dale Kennen (MN '60)
 Jay Koths (MI '47)
 Chris (CO '67) † & Vicki Lembcke
 Jerry Lindley (PU '52)
 Randy Linville (KS '73)
 Steven Lonergan (IA '85)

Arthur Magnusson (MN '37) †
 Patrick McAllister (SD '79)
 John Moseman (NE '40) †
 Jason Mott (MO '91)
 Orville Mowery (IL '25) †
 G. Richard Munson (KS '73)
 Scott Nagel (MN '85)
 Gene Nesbitt (CO '60)
 James Parochetti (IL '59)
 Roland Peterson (MN '77)
 Don Pettengill (MI '58)
 Gene Pickler (NC '54) ●
 Dallas & Brenda Powell
 Ken Pruitt (MO '51)
 Gyles Randall (MN '60)
 John Riley (KS '79) ●
 Russell Roberson (AU '78)
 David Rock (KS '77)
 Louis Rosenau (ND '68)

Richard Ross (ID '57) ●
 James Rupp (CO '82)
 Lawrence Schrader (KS '60)
 Jeremy Settles (NM '94)
 Dean Sims (IL '37) ●
 Roger Sorenson (MN '50) ●
 James Spicer (IL '62) ●
 Charles Stuber (NE '49)
 Laurent Taylor (ID '62)
 Jeff (ND '79) & Jan Topp
 W. Lee Tucker (KY '51) ●
 Vince Ulstad (NE '78)
 Albert Vannice (MI '63)
 Jerry Walker (NC '96) ●
 Pete Wenstrand (IA '70)
 Thomas Wickersham (IA '38) ●
 James Wieland (ND '72)
 Bob Wiles (MI '63)



Homer Barnett (MN '40) †
 John Beckett (IA '30) †
 Rick Berg (ND '78)
 Lloyd Bettis (IA '67)
 Frank Bezdicsek (MN '67)
 Brent Bible (PU '93)
 Olin & Paula Branstetter (OK '48) †
 Martin Clark (IA '49) †
 Richard Clark (WY '59)



Mike (IL 67) and Jan Fayhee

“None of us can see the future, but the one thing we all know is that circumstances change.”

Doing the Most Good for as Many Young Men as Possible

Mike (IL 67) and Jan Fayhee established a six-figure unrestricted endowment fund during Live. Learn. Lead.—The Campaign for FarmHouse

FOR MIKE FAYHEE (IL 67), his experiences at the University of Illinois and more specifically, in FarmHouse, were fundamental to many aspects of his personal and professional life.

He and his wife, Jan, both feel that fraternity/sorority experience was at the center of their college years.

“These experiences shaped how I still view what is good in life and what a life well-lived means,” Mike said.

These lessons have served him well in his life and career. Mike is a partner in the law firm of McDermott Will & Emery LLP, in the company’s Chicago office. He is a member of the firm’s executive committee, previously chaired the firm’s tax business unit and is also responsible for the firm’s practice group in China.

It is also this experience and his gratitude to FarmHouse that led him to get involved at an international level when he became a Foundation Trustee in 2008.

“Through the lens of serving as a Trustee, it became apparent that the FarmHouse experience I benefitted from is dependent on the support of the entire FarmHouse network, not just each chapter,” he said.

During his time as a Trustee, Mike

was instrumental in developing the Foundation’s Chapter Housing Loan Program and provided valuable counsel and legal advice to the Board and Staff.

It was also during this time that he and Jan decided to make a significant investment in *Live. Learn. Lead.—The Campaign for FarmHouse*.

They wanted to give back to FarmHouse

We count on my FarmHouse brothers on the Board to do the right things in response to those changes,

since it had been so important during his formative years.

Mike said, “We have little doubt that educational opportunities afforded to us in our early years had outsized influence in our development, which is why our giving has been focused primarily on educational institutions.”

FarmHouse fits well with their

and we know that they use our funds for the best use of FarmHouse.”

philanthropic objectives. “To us, a gift to FarmHouse furthered our desire to support education and give back to something I had benefited from.”

He added, “We both believe that character development does not just happen, it is dependent on institutions like FarmHouse that set the framework of beliefs that distinguish right from wrong

and demand the courage to do right. And this along with the leadership skills learned in FarmHouse will benefit our families and community institutions for decades to come.”

Mike and Jan have generously supported the Annual Fund over the years, and decided their passion was continuing the FarmHouse experience for future generations of young men—across all chapters.

So, during the Campaign, Mike and Jan gave a six-figure gift to establish an unrestricted endowment fund, which is to be used at the discretion of the Board of Trustees.

The purpose of the fund is to support educational programs for the betterment of FarmHouse International Fraternity and the operations of the FarmHouse Foundation.

By creating an unrestricted endowment, Mike and Jan have left a legacy that will provide current, flexible resources for the ongoing leadership programs, educational initiatives and operations in order to do the most good for as many FarmHouse undergraduates as possible.

The reason behind their unrestricted gift?

“It is simple—we trust the Board to spend our money wisely to further the mission of FarmHouse,” Mike said.

He added, “None of us can see the future, but the one thing we all know is that circumstances change. We count on my FarmHouse brothers on the Board to do the right things in response to those changes, and we know that they use our funds for the best use of FarmHouse. These brothers have been, are and will be the very embodiment of FarmHouse values.”

He encourages others

to support the Foundation, especially through unrestricted gifts, such as for the Annual Fund and endowments.

He said, “It is a tribute to those who preceded us, and support and encouragement to those who will follow.” *

—Mike Fayhee (IL 67)



The Journey: Selected Journal Entries

FROM THE JOURNAL OF BLAKE LINEWEAVER (IA 16)

At the end of May, 2017, 10 FarmHouse men participate in The Journey: FarmHouse. This one of a kind, member experience is a unique, week-long service immersion program. Partnering with Heart to Honduras, the Fraternity supports international development and relief efforts in Honduras.

The Journey team stayed at a camp in Santa Elena. Over the course of the week, the team (with the help of the local community) constructed a house for a single parent family in the village of Quebradas Del Agua, played soccer against a youth team coached as a part of a Heart to Honduras community outreach program and built stronger relationships with each other and the local Hondurans. Earlier this year, FarmHouse agreed to partner with a specific community, El Olvido, to support throughout the course of the year. The Journey was able to attend a traditional church service and get a tour of the agricultural efforts of the village—one of the highlights was touring a thriving cacao patch farmed by one older local.

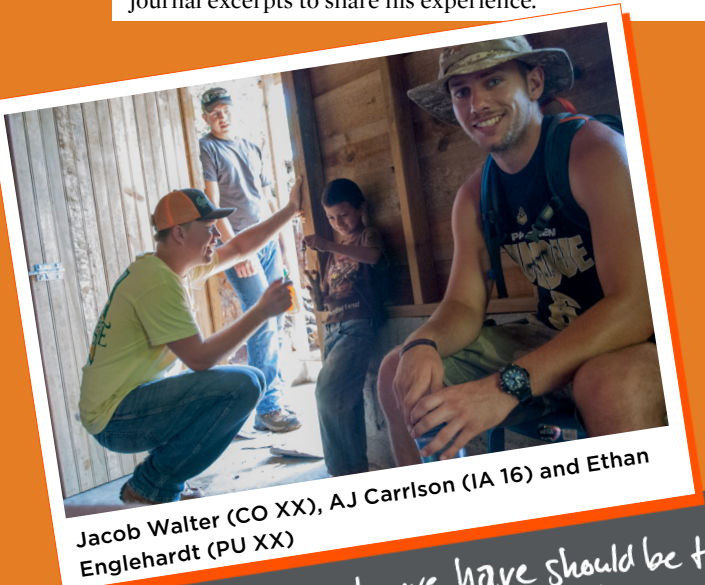
One attendee, Blake Lineweaver (IA 16), offered a few journal excerpts to share his experience. *



Wilson Ogg (CO XX) constructs



We played soccer with the local boys for about an hour before church, and I realized how universal simple joy goes.



Jacob Walter (CO XX), AJ Carrlson (IA 16) and Ethan Englehardt (PU XX)

Each encounter we have should be taken with an open mind and kind heart.





the shutters for a window

Going forward, I'm excited to see how my thoughts grow with this team, this nation, and an incredible reflection into faith.

I appreciated the fact that fun for them is running around and enjoying each other's company, rather than by themselves, scrolling through technology.



Lineweaver takes a few moments to connect with the Honduran family



From the first day, each moment brought more thought to my mind with the Honduran culture and my fellow FarmHouse men.

I'm incredibly grateful for having joined these 10 other FH men as we built not only a home for a deserving family but many relationships with these driven people.



The 2017 Journey participants and a few member of the Honduran family and community

Alumni NEWS

Colorado State

Jordan Lestina (CO 11) of Dove Creek, CO, started his 27 month service commitment for the Peace Corps and will be stationed in the Myadgi District of Nepal. While there, he will serve as a food security volunteer. In this role he will collaborate with Nepali communities in agricultural and nutrition projects to achieve the following goals: sustainably improve soil conditions for garden and field crops, sustainably increase production of diverse and nutritious food crops and improve family nutrition. Another alumnus currently serving in the Peace Corps is Collin Dutro (CO 11) of Karval, Colo., who serves in Singida, Tanzania. ** PHOTO **

Sage Rogers (CO 12) of Glade Park, CO, is to participate in the International 4-H Youth Exchange (IFYE) Program. His visit will consist of a three-month stay in Switzerland and a three-month stay in Finland. Rodgers is the third Colorado State FarmHouse alumnus in recent years to be accepted into the IFYE Cultural Exchange Program, as Adam Seymour (CO 09) and Tyler Asnicar (CO 09) attended in 2014 and 2015, respectively. The IFYE Exchange Program was founded after World War II as young Americans perceived the need for greater international understanding and cooperation. The program has given over 4,000 Americans the opportunity to experience other cultures in 116 countries and a similar number of young people from other nations the opportunity to visit the United States.

Iowa State

William Edwards (IA 67), emeritus professor of economics at Iowa State, has been named interim director of two extension-focused centers in the ISU College of Agriculture and Life Sciences, the Beginning Farmer Center and the Center for Agricultural Law and Taxation. The Beginning Farmer Center, conducts programs for farmers who want to transition their farm business to the next generation or to people who want to get into farming. The Center for Agricultural Law and Taxation, provides timely, objective information to agricultural producers, professionals and agribusinesses on the application of important developments in agricultural law and taxation. For more than 30 years, he provided

leadership for the Agricultural Credit School, an annual workshop sponsored by Iowa State and the Iowa Bankers Association. Edwards has been honored many times during his career, including the 2016 Faculty/Staff Inspiration Award from the ISU Alumni Association, the 2014 Iowa Master Farmer Award for Exceptional Service to Agriculture and the 2014 Distinguished Service to Iowa Agriculture Award from the Iowa Chapter of the American Society of Farm Managers and Rural Appraisers. ** PHOTO **

Prior to his passing in May, **Gene Lloyd** (IA x47), was the 2016 recipient of the Iowa State Alumni Association's Distinguished Alumni Award. The award was presented to Lloyd and his wife, Linda, during a special in-person ceremony held in Fort Myers, Florida, in January. The Award is the highest honor given to alumni by Iowa State University. This award honors ISU alumni who are nationally and/or internationally recognized for preeminent contributions to their professions or life's work. For five decades, Lloyd's pharmaceutical and nutritional products have been used by veterinarians and physicians throughout the world to aid in the treatment of diseases and nutritional deficiencies, through his company, LLOYD, Inc., based in Shenandoah, Iowa. After military service, Lloyd served 10 years as a professor of veterinary pathology and toxicology at Iowa State and 15 years as a private practitioner of veterinary medicine, prior to the establishment of LLOYD, Inc. Lloyd was an ISU Foundation governor and served as vice chair of both Campaign Destiny and Campaign Iowa State: With Pride and Purpose, among many other volunteer and leadership positions. Iowa State University's Lloyd Veterinary Medical Center is named in recognition of the great generosity of Dr. Lloyd and his wife, Linda.

Bill Northey (IA 79), Secretary of Agriculture, State of Iowa, and **Steve Troxler** (HON 14), Commissioner of Agriculture, State of North Carolina, were two of 14 farmers and agriculture leaders invited to a roundtable with President Trump in April 2017. The roundtable was the start of a task force appointed to promote agriculture, economic development, job growth, infrastructure improvements, technological innovation, energy security, and quality of life in rural America. Participants in the roundtable also witnessed the swearing in of Sonny Perdue, of Georgia, as the new U.S. Secretary of Agriculture.

Rich Shuler (IA 64) is the 2017 Iron Paw Award recipient from the Kansas City Animal Health Corridor Coalition. The award is presented to a professional in the animal health industry for lifetime achievement in advancing the profession. Shuler is President and CEO of Shuler Consulting Services and has over 40 years of experience in creating and building successful businesses and developing a strong market position for their products and services. In this capacity Shuler was the founder, CEO or investor in seven animal-health and technology related companies, including ProVet, VetLife, Ivy Animal Health, Ivy Natural Solutions, AgSpan and AGL-Vetrax. He is a board member of the National Cattlemen's Foundation and board member of the KC Animal Health Investment Forum. He also serves as Vice President of Casa Brasil Coffees and is an investor in the Austin, Texas upscale coffee roasting company. Married 50 years to Sharon Douglas Shuler, the Shulers reside in

Alumni News

Johns Creek, GA. ** PHOTO or Foundation has a head shot **

David Williams (IA 51), and his spouse, Corrine, of rural Villisca, Iowa, are the 2017 Spencer Award recipients from the Leopold Center for Sustainable Agriculture at Iowa State University. The Spencer Award recognizes researchers, teachers and farmers who have contributed significantly to the environmental and economic stability of the Iowa farming community. David and Corrine Williams own a six-generation heritage farm in Page County, Iowa. They grew corn and soybeans, raised hogs, and ran a cow-calf operation. David and Corrine have turned over operations to their son, Bruce, and grandson, Aaron, who is the sixth generation of Williams to farm the land. The Williamses practice no-till and have done so for over 20 years. They are strong advocates for sustainable farming. In 1995, David was part of the Iowa Environmental Council organizing committee, an accomplishment of which he is most proud. He was a member of the Leopold Center Advisory Board from 1993-2002 and served as board chair in 2000. David's advocacy has taken him to Washington, D.C. where he has testified on behalf of the Sierra Club and the Soil Conservation Service. D

Roy Reiman (IA 55), and his wife, Bobbi, are the 2017 recipients of the Iowa State University Foundation's True and Valiant Award. Presented to an individual, couple or family, the award recognizes exceptional service, generosity and outstanding leadership that has helped transform Iowa State University. The Reimans are only the second recipients of this high honor. Besides their generous gifts to Reiman Gardens, their giving has supported the Alumni Center, Jack Trice Stadium South End Zone, the restoration of the campanile and Morrill Hall, the Greenlee School of Journalism, the Reiman Endowment for Entrepreneurship and the Reiman Lectures in Entrepreneurship.

"This is a special place for me," said Roy. "In a way, it's where my life truly began. How could I not give back to a place that made such a difference in who I am?"

Roy is an Iowa State University Foundation Governor and a past member and president of the Iowa State University Alumni Association board of directors. For his success in the publishing and entrepreneurial sector. He is now focused on his latest publication success, *Our Iowa*.

The Iowa State tradition of the Reiman Family continues today, as their grandson, Jonathan Ellis (IA 15), is a current chapter member of the Iowa State Chapter. The Reimans live in Greendale, Wisconsin.

Kansas State

Nick Guetterman (KS 05) and his wife, Jennie, of Johnson County, Kan., were honored as Farm Family of the Year for Kansas Farm Bureau's 2nd geographic district. The Farm Family of the Year award is given to one family in each of Kansas Farm Bureau's 10 geographic districts to recognize families for "their service and leadership in agriculture, Farm Bureau and their communities." Nick and Jennie Guetterman, along with Nick's father and two brothers, operate Guetterman Bros. Family Farms LP, a row crop operation, which began in 1998. The Guettermans raise no-till corn, soybeans and wheat. ** PHOTO *

Michigan State

Dr. K. Patrick Ober (MI 68), is the Association of American Medical Colleges 2016 Alpha Omega Alpha Robert J. Glaser Distinguished Teacher Award recipient. The award provides national recognition to faculty members who have distinguished themselves in medical student education. As professor of internal medicine at Wake Forest School of Medicine (WFSM), Ober, has influenced the lives of thousands of medical and physician assistant (PA) students, residents, fellows, and faculty. In return, WFSM learners have honored him with more than 30 teaching awards. In addition to his prowess as a clinical educator, Dr. Ober is an internationally recognized expert on Mark Twain. Like Twain, Dr. Ober's teaching style relies on stories to make even the most complex material approachable. His scholarship also intertwines his areas of expertise: he has published books and journal articles with titles like *Mark Twain and Medicine: "Any Mummery Will Cure," "The Pre-Flexnerian Reports: Mark Twain's Criticism of Medicine in the United States,"* and *"Mark Twain's 'Watermelon Cure'."* The WFSM PA program established the Patrick and Cathy Ober Community Leadership Award in 2015, which honors a student who has demonstrated "remarkable dedication to community service and leadership in outreach, philanthropy, and humanitarianism." He resides in Clemmons, North Carolina. ** PHOTO although likely low quality **

Minnesota

Don Buhl (MN 69), is the 2016 Laureate of the Siehl Prize for Production Agriculture. The honor is awarded by the University of Minnesota's College of Food, Agriculture and Natural Resource Sciences to recognize those who make extraordinary contributions toward producing food and ending hunger. Laureates for the Siehl Prize are chosen in three categories - production, agribusiness and knowledge. Buhl, pork producer from Tyler, Minn., has been a leader in state and national pork organizations over the past three decades, helping to develop programs for people new to the industry and to expand U.S. pork exports. He was a founding member of the Pipestone System, a production model aimed at allowing independent family farms to remain competitive through shared ownership and increased efficiencies. ** PHOTO ** - head shot on file with Foundation as well

North Dakota State

Longtime North Dakota State University faculty member and administrator **H. Roald Lund** (ND 55), Master Builder, was the recipient of an Honorary Doctorate in Agriculture from the University during its May 2017 commencement ceremonies. An honorary doctorate is the most prestigious award presented by the University and recognizes distinguished contributions to a specific field or service to society. Lund is the 161st recipient of an honorary doctorate from NDSU, which were first awarded in 1939.

A native of Hillsboro, North Dakota, he graduated from what was then called North Dakota Agricultural College with his bachelor's degree in agronomy and agricultural education in 1955. He

Alumni News

continued on campus, earning his master's degree in agronomy in 1958. After military service in the Army, Lund returned to NDSU and was named an assistant professor of agronomy and assistant breeder for the Hard Red Spring Wheat breeding program. He later earned his doctorate from Purdue University and again returned to NDSU as an associate professor and corn geneticist.

Lund was named assistant dean of agriculture and assistant director of the North Dakota Agricultural Experiment Station in 1969. He became associate dean and associate director in 1974, and, in 1979, he was selected as dean and director, a position he held for 15 years. Many important projects became reality through his vision and leadership, including Hultz Hall, Van Es Laboratory, Robinson Hall, the North Dakota State Seed Department building, Northern Crops Institute, Loftsgard hall, Industrial Agricultural Communications Center and the USDA-ARS Northern Crops Science Laboratory.

Lund retired from NDSU in December 1998, after spending more than 37 years at the university as a teacher, researcher and administrator. Today, Lund and his wife, Janet, live in Pelican Rapids, Minn.

** Check files for a head shot with Foundation or alumni donor files **

Oklahoma State

Brad Morgan (OK 82) has been named an American Meat Science Association (AMSA) Fellow and is a recipient of the 2017 AMSA Signal Service Award. The AMSA Signal Service Award is given to members in recognition of devoted service and lasting contributions to the meat industry and to the association. Dr. Morgan is currently Senior Director of Protein for the Performance Food Group. Dr. Morgan taught at Colorado State University, where he was part of the inaugural National Beef Quality Audit, and Oklahoma State University. At Oklahoma State University, Dr. Morgan attracted over \$12.5 million in extramural funding, published over 90 journal articles, gave over 1,500 invited presentations, and conducted research in 29 countries. Dr. Morgan's research and expertise in meat tenderness and color is known nationally and internationally. One of Morgan's last research interests focused on development, verification and implementation of the OSU Beef Tenderness Prediction System along with developing the dry gaining protocols for beef cuts destined for international markets. ** PHOTO **

Kyle Hilbert (OK 13) was elected in November 2016 to the Oklahoma State House of Representatives in House District 29. At age 22, Hilbert is the youngest member of the Oklahoma State Assembly. He is vice chair of the Human Services Committee and serves on the House's Banking, County and Municipal Government and Higher Education Committees. He is a May 2016 graduate of Oklahoma State University with a degree in agricultural business. Hilbert works for a family-owned business that makes and distributes pizza dough, Dough Boyz Pizza and Equipment. Hilbert and his wife, Alexis, live in Depew, Oklahoma. ** PHOTO **

Purdue

Sonny Beck (PU 59), Master Builder, was named the Indiana Chamber of Commerce's 2016 Business Leader of the Year. In recognizing Beck, the Chamber described him as "an agriculture titan" as the Chairman of Beck's Superior Hybrids, based in Atlanta, Ind. The business is the largest family-owned seed company in the United States, now with the fourth-generation involved in its operations. The annual award recognizes outstanding business leaders for the lifetime achievement and in promoting economic and business development interests in the state of Indiana.

Tennessee

Jim Herbert (TN 61), Master Builder, is the 2017 recipient of the North-American Interfraternity Conference Foundation's (NICF) Outstanding Philanthropist Award. This honor is part of the NICF's annual Awards of Distinction program and recognizes leadership in giving to a fraternal foundation.

Jim is a co-founder and CEO of Neogen Corporation, a publicly held international company that develops, manufactures and markets products for food and animal safety. Headquartered in Lansing, Mich., Neogen markets its products to over 100 countries, with revenue over \$321 million in 2016.

A former Chairman and long-time member of the FarmHouse Foundation Board of Trustees, Jim was recognized with the Fraternity's highest award, Master Builder of Men, in 2016. He spearheaded *Live. Learn. Lead. - The Campaign for FarmHouse*, a comprehensive campaign focused on raising funds to support current and future chapter housing, scholarships and leadership opportunities for FarmHouse undergraduate members across North America. Jim and his wife Judi, a member of Sigma Kappa, made a seven-figure commitment to the Campaign, which raised a total of \$23.6 million.

A portion of their transformational commitment was to establish an endowment fund. Already as a result, their endowment has enabled the Fraternity to create the Volunteer Leadership Summit to educate volunteers in risk management, mental health, safe and secure chapter housing, and other needs of undergraduate members now and in the future. When asked why the Herberts invested in *Live. Learn. Lead.*, Jim said, "...across the board, the key difference between a successful chapter and one that fails is strong volunteer leadership."

"Jim is most deserving of this interfraternal philanthropy honor as he is exceptionally generous, demonstrates outstanding fraternal and charitable responsibility and encourages others to be philanthropic," said Allison Rickels, Executive Director of the FarmHouse Foundation. "He has been a champion of FarmHouse since he was initiated in 1961 and embodies FarmHouse Fraternity's Object by his actions, business acumen, demeanor, and living his life with the highest of integrity." *

IN Memoriam

Idaho

MARVIN J. WITTMAN ('69); 11/04/2016; 95; Lewiston, Idaho

Illinois

I. RONALD LAWFER ('52); 12/18/2016; 82; Stockton, Ill.

RALPH F. ZIEGLER ('50); 10/23/2016; 84; San Antonio, Texas

Iowa State

JAMES H. BAILEY ('42); 05/12/2017; 93; Brookings, S.D.

DUANE P. JACOBS ('47); 09/07/2016; 91; Young American, Minn.

ROBERT J. KIRKPATRICK ('39); 01/26/2016; 95; Indian Wells, Calif.

GEORGE W. OPPERMAN ('41); 06/20/2015; 92; Beloit, Wis.

DARL E. SNYDER ('42); 02/25/2017; 94; Pomona, Cali.

EVAN G. STADLMAN ('71); 12/09/2016; 64; Ankeny, Iowa

MONTGOMERY STRATHE ('63); 10/21/2016; 72; Hubbard, Iowa

LARRY E. SYNDERGAARD ('56); 4/15/2015; 79; Kalmazoo, Mich.

TAYLOR H. WILLIAMS ('11); 12/09/2016; 25; Glenwood, Iowa

DONALD D. ZIMMERMAN ('54); 04/29/2017; 81; Harvel, Ill.

Kansas State

GLENN S. FOX ('30); 10/29/2016; 105; Mission Hills, Kan.

FRED W. GATLIN ('67); 10/7/2016; 68; Topeka, Kan.

KYLE C. PELTON ('12); 11/23/2016; 24; Wichita, Kan.

ROGER C. OPLINGER ('68); 12/25/2016; 67; Jewell, Kan.

DAVID W. REINKEMEYER ('71); 06/21/2016; 64; Spring, Texas

HAROLD M. RILEY ('42); 01/31/2017; 94; East Lansing, Mich.

Kentucky

BENJAMIN T. ROBERTSON ('51); 04/13/2017; 91; Auburn, Ala.

RANDALL D. WOOD ('56); 11/24/2016; 80; Bryan, Tex.

Michigan State

KENNETH C. CAVANAUGH ('37); 04/14/2017; 100; Vista, Calif.

MI DONALD HILLMAN ('50); 6/10/2017; 88; East Lansing, Mich.

ROLF F. ILLSLEY ('39); 03/01/2017; 95; San Rafael, Calif.

Minnesota

STANLEY L. DIESCH ('50); 05/10/2017; 91; Roseville, Minn.

WARREN Y. GORE ('79); 01/17/2017; 93; Saint Paul, Minn.

JUSTIN J. FEUCHT ('50); 12/7/2016; 88; Anaheim, Calif.

ROBERT B. HAGBERG ('73); 11/30/2013; 61; Butler, Mo.

KEITH A. JOHNSON ('64); 12/3/2016; 73; Burnsville, Minn.

GLEN P. ROUSE ('68); 68; 07/28/2016; Larkspur, Colo.

Missouri

WILLIAM F. DELANEY ('53); 82; 03/19/2017; Jacksonville Beach, Fla.

RAYMOND D. HAGAN ('37); 05/01/2017; 102; Jefferson City, Mo.

CHARLES W. MILLNER ('41); 04/06/2016; 94; Willow Springs, Mo.

JAMES L. RUSSELL ('59); 3/21/2017; 78; Jefferson City, Mo.

Nebraska

L. LAMOINE BROWNLEE ('46); 05/04/2017; 94; Lincoln, Neb.

KEITH R. ERLEWINE ('52); 03/05/2017; Sacramento, Calif.

VERNON C. FEYE ('57); 11/29/2016; 84; Fremont, Neb.

The following are notices received by the International Office between October 1, 2016 and July 1, 2017.

Listed by—Name (Initiation year) Death 0/0/000; Age at time of death; resided in



Darl E. Snyder (IA 42), Master Builder

BORN MARCH 5, 1922. He attended Iowa State University. His college years were interrupted by wartime service in the Army Air Corps. Upon his honorable discharge from military service, he returned to Iowa State University where he became active in FarmHouse Fraternity.

From 1959–63, he served as part-time executive director of FarmHouse International Fraternity, assuming this role full-time from 1963–69. His tenure included the chartering of five chapters, establishment of the first educational program in the Fraternity's Regional Leadership Conferences and the creation of The FarmHouse Foundation. Together, he and his wife Flo edited and published the fraternity's national magazine, The Pearls and Rubies.

Throughout his service to FarmHouse, Darl lived a life which was always exemplary of FarmHouse ideals. In 1970 FarmHouse conferred upon Darl the Master Builder award, and also established the Darl E. Snyder Award to recognize those associate and alumni members who, like Darl, have contributed by their deeds to the growth and development of the Fraternity.

He died February 25, 2017, just eight days short of his 95th birthday.*



**Clayton K. Yeutter
(NE 49), Master
Builder**

Clayton Yeutter moved as seamlessly among high level positions in both the public and private sectors as has anyone in the U.S. in the post-World War II period. He did so while maintaining the respect and cooperation of friend and political foe alike. He held a Cabinet post (U.S. Trade Representative) under President Reagan, another (Secretary of Agriculture) under President George H.W. Bush, and then had a short stint (1991) as Chairman of the Republican National Committee, before finishing his tenure in government as Counselor to the President, a Cabinet-level White House post, also under President George H. W. Bush. Earlier in his career he held two sub-Cabinet appointments in the Department of Agriculture and then a sub-Cabinet appointment in the Office of the Special Trade Representative. Straddling these public sector undertakings was a seven year tenure as CEO of the Chicago Mercantile Exchange. That was the beginning of an enormous period of growth for the exchange, which now has the largest market cap of any exchange in the world. Yeutter was raised an only child on a central Nebraska farming and cattle operation which struggled to survive in the drought/depression years of the 1930s. Thanks to the hard work of his parents, the Yeutter farm did survive. Clayton Yeutter went on to earn a B.S. in Animal Husbandry, a J.D. and a Ph.D. (agricultural economics), all from the University of Nebraska with highest academic honors. Yeutter's first public service involvement was as Chief of Staff to the Governor of Nebraska from 1967-68. He then received

A. DALE FLOWERDAY ('48); 06/10/2017; 89; Murfreesboro, Tenn.

MERWYN FRENCH ('47); 02/14/2017; 89; Peoria, Ill.

DONALD R. GEISLER ('53); 03/25/2017; 82; Des Moines, Iowa

W. TERRY HOWARD ('55); 02/26/2017; 80; Owatonna, Minn.

CLAYTON K. YEUTTER ('49); 03/04/2017; 86; Potomac, M.D.

North Carolina State

EUGENE B. PICKLER ('54); 02/04/2017; 82 ; New London, N.C.

Ohio State

JAMES E. HAUGHN ('60); 01/21/2017; 78; Wabash, Ind.

THOMAS W. JONES ('46); 11/29/2016; 94; Prospect, Ohio

RONALD J. SPIKER ('73); 01/24/2016; 64; Adamsville, Ohio

Oklahoma State

ROBERT V. GLYNN ('48); 90; 11/30/2016; ; Marion, Kan.

Oregon State

JERRY D. SWAN ('70); 3/23/2016; 66; Portland, Ore.

Purdue

KENNETH S. ROGERS ('54); 05/21/2017; 81; Chalmers, Ind.

TERRY G. WILD ('68); 04/15/2015; 66; Greensburg, Ind.

MAURICE L. WILLIAMSON ('61); 01/31/2017; 91; West Lafayette, Ind.

South Dakota State

JEFFREY T. OLSON (SD '83); 06/08/2017; 54; Madison, Minn.

Troy

BENJAMIN L. KNIGHT ('09); 06/04/2017; 26; Auburn, Ala.



**Eugene B. Pickler
(NC 54), Master
Builder**

BORN JUNE 14, 1934 In Stanly County, he was the son of the late Jacob Maurice Pickler and Lena Jerome Peck Pickler. He graduated from Richfield High School. He then proceeded to attend and graduate from North Carolina State University with a Bachelor's Degree in Agricultural Economics. He also graduated from Michigan State University with a Master's degree in Agricultural Economics. He returned to New London to work with the family business Springdale Farms. He also taught Economics at Pfeiffer University for over 50 years.

He was a lifelong member at Kendalls Baptist Church in New London. He was a very active member of the FarmHouse Fraternity at North Carolina State University and at the National level. At one time he was also a member of the Stanly County Board of Education for 12 years, a member of the New London Lions Club, and a member of the Stanly County Investment Club. He established the Gene and Janet Pickler International Endowed Scholarship at Pfeiffer University.

Eugene was married to the late Janet Wirth Pickler who preceded him in death on March 8, 2013. He is survived by three daughters, Audrey Barringer of New London, Sara Pickler of Albemarle, and Eva Pickler and husband Stirling Young of Upperville, Virginia. One brother, Maurice J. Pickler, preceded him in death. He is also survived by a sister-in-law Adelaide Pickler of Raleigh. He is survived by three grandchildren, Rachel Barringer, Christine Barringer, and Garrett Barringer.

Eugene B. Pickler, 82, of New London passed away Friday, February 3, 2017.



Casey Ricker (ND 15) stands next to a stegosaurus bone during a trip to the Judith River Dinosaur Institute in February as a part of the Regional Leadership Conference in Billings, Mont.

FARMHOUSE FRATERNITY

7306 NW Tiffany Springs Parkway, Suite 310
Kansas City, MO 64153-9905

NON-PROFIT
ORGANIZATION
U.S. POSTAGE
PAID
PERMIT NO. 114
HANOVER, NH

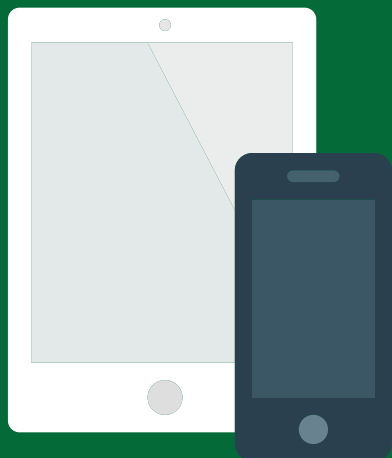
CHANGE SERVICE REQUESTED

INTRODUCING THE NEW FARMHOUSE.ORG

Organized to easily meet the needs of potential new members, undergraduate members, alumni, volunteers, parents, campuses and friends of FARMHOUSE.



GO ONLINE
TODAY!



◀ RESPONSIVE BETWEEN MOBILE, NOTEPAD
AND DESKTOP DEVICES.